

ASweld

ELEKTRODY I OSPRZĘT DO ZGRZEWANIA

Wydanie: SIERPIEŃ 2021

KATALOG ELEKTROD DO ZGRZEWANIA REZYSTANCYJNEGO

STOŻEK NR 11

zbieżność MK1 Ø12,065



KARTY KATALOGOWE

PRODUKTY

01.....	ELEKTRODY PROSTE
02.....	ELEKTRODY ODSADZONE KUTE
03.....	ELEKTRODY ODSADZONE GIĘTE
04.....	ELEKTRODY ODSADZONE PODWÓJNIE GIĘTE
05.....	ELEKTRODY PŁASKIE
06.....	OBSADY ELEKTROD NASADKOWYCH
07.....	OBSADY ELEKTROD GRZYBKOWYCH I WKRETEK ELEKTRODOWYCH
08.....	ELEKTRODY DO ZGRZEWANIA ŚRUB I NAKRETEK
09.....	ELEKTRODY WOLFRAMOWE
10.....	ŚWIECE ELEKTRODOWE
11.....	ELEKTRODY KRAŻKOWE
12.....	MATERIAŁY, OSPRZĘT, URZĄDZENIA DO ZGRZEWAREK

ASweld

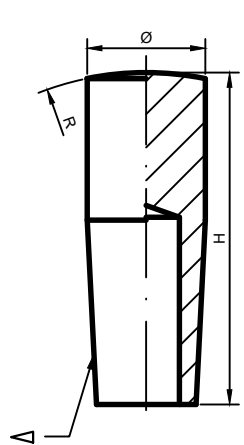
ELEKTRODY PROSTE

STOŻEK NR 11

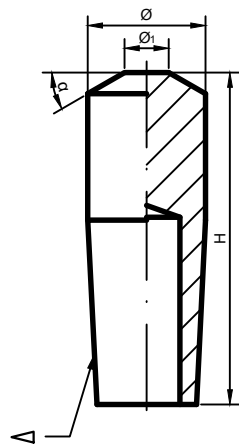
zbieżność MK1 $\varnothing 12,065$

Karty katalogowe: 01-__-__-11

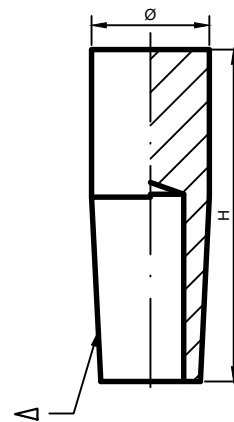




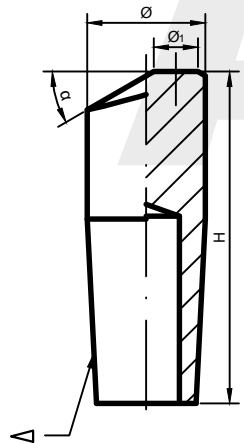
AW: A(R)-Ø.H-Δ



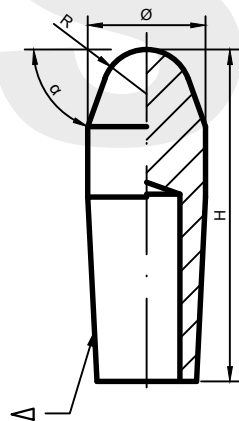
AW: Bk(Ø1)-Ø.H-Δ



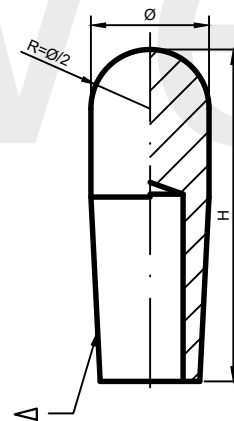
AW: C-Ø.H-Δ



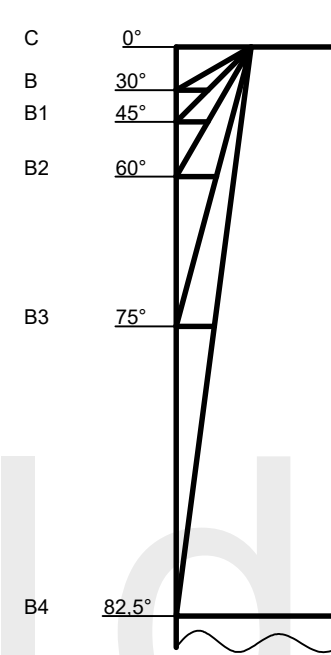
AW: Dk(Ø1)-Ø.H-Δ



AW: Ek(R)-Ø.H-Δ

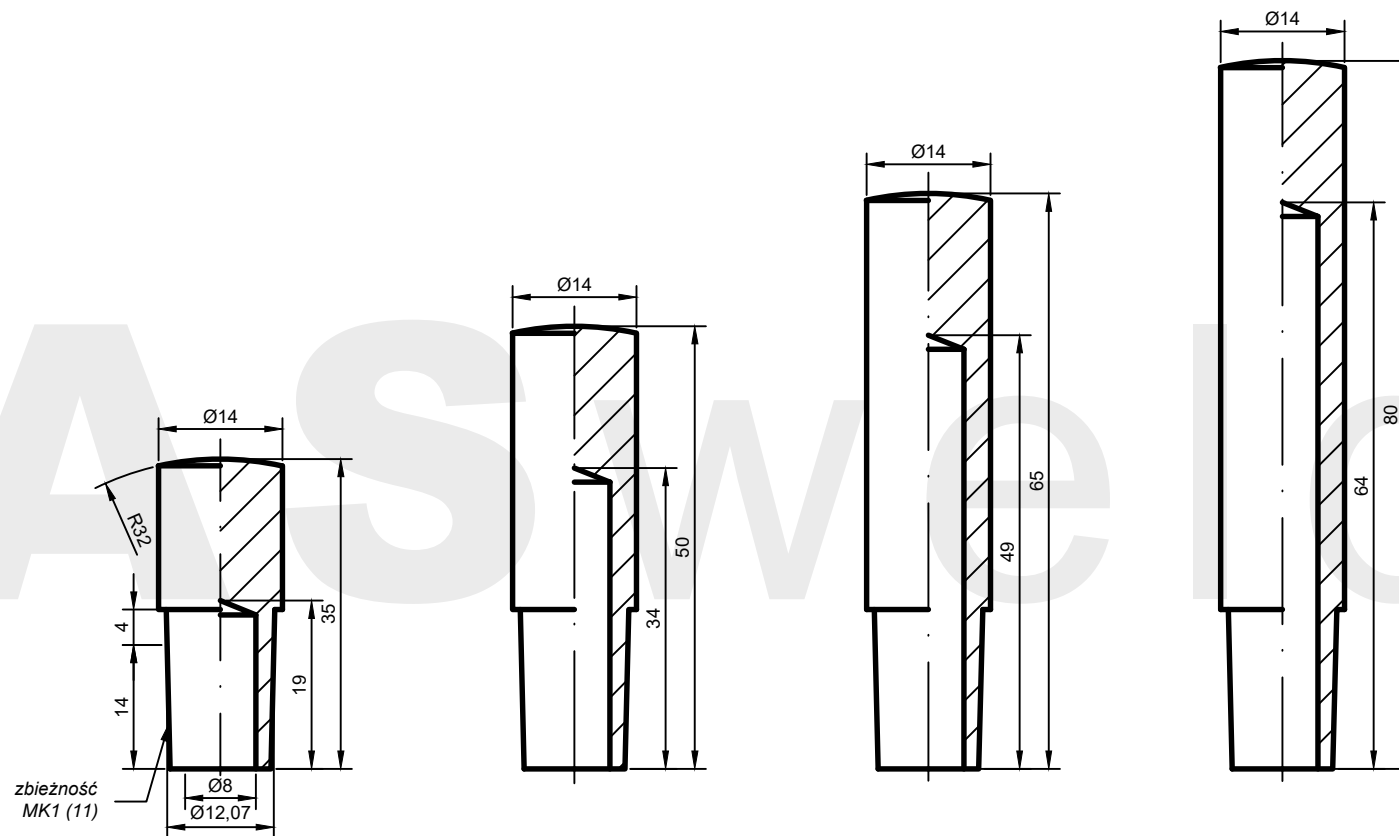


AW: F-Ø.H-Δ



k	α
-	30°
1	45°
2	60°
3	75°
4	82,5°





AW: A(32)-14.35-11

AW: A(32)-14.50-11*

AW: A(32)-14.65-11*

AW: A(32)-14.80-11*

*wykonanie na zamówienie

ASweld

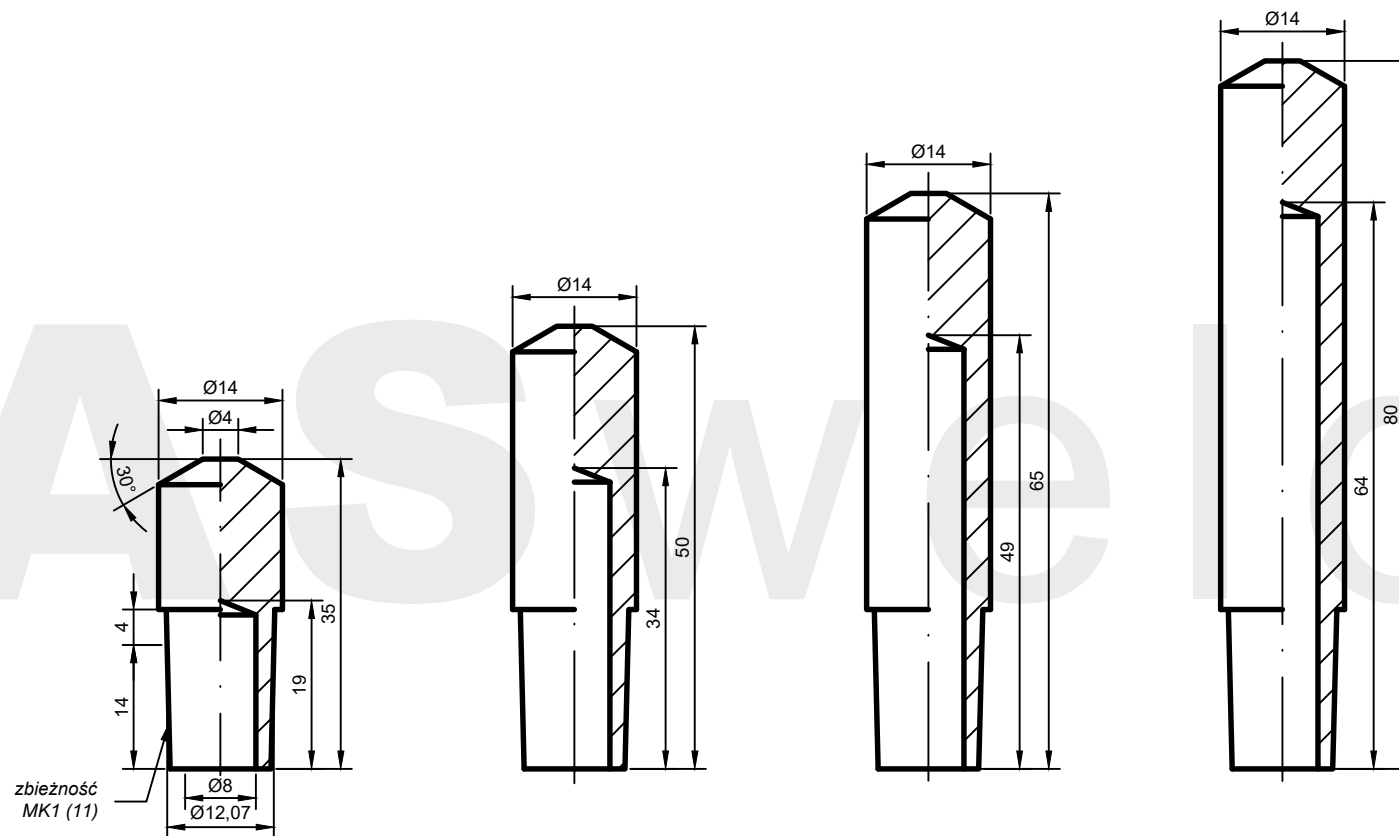
ELEKTRODA PROSTA
forma A

Chwył elektrody

11

Karta katalogowa

01-01-01-11



AW: B(4)-14.35-11

AW: B(4)-14.50-11*

AW: B(4)-14.65-11*

AW: B(4)-14.80-11*

*wykonanie na zamówienie

ASweld

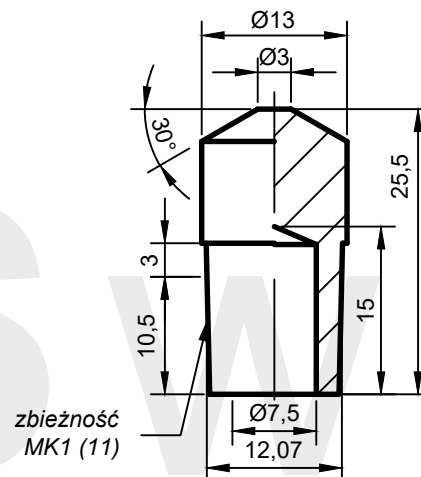
ELEKTRODA PROSTA
forma B

Chwył elektrody

11

Karta katalogowa

01-02-01-11



AW: B(3)-13.25,5-11

*wykonanie na zamówienie

ASweld

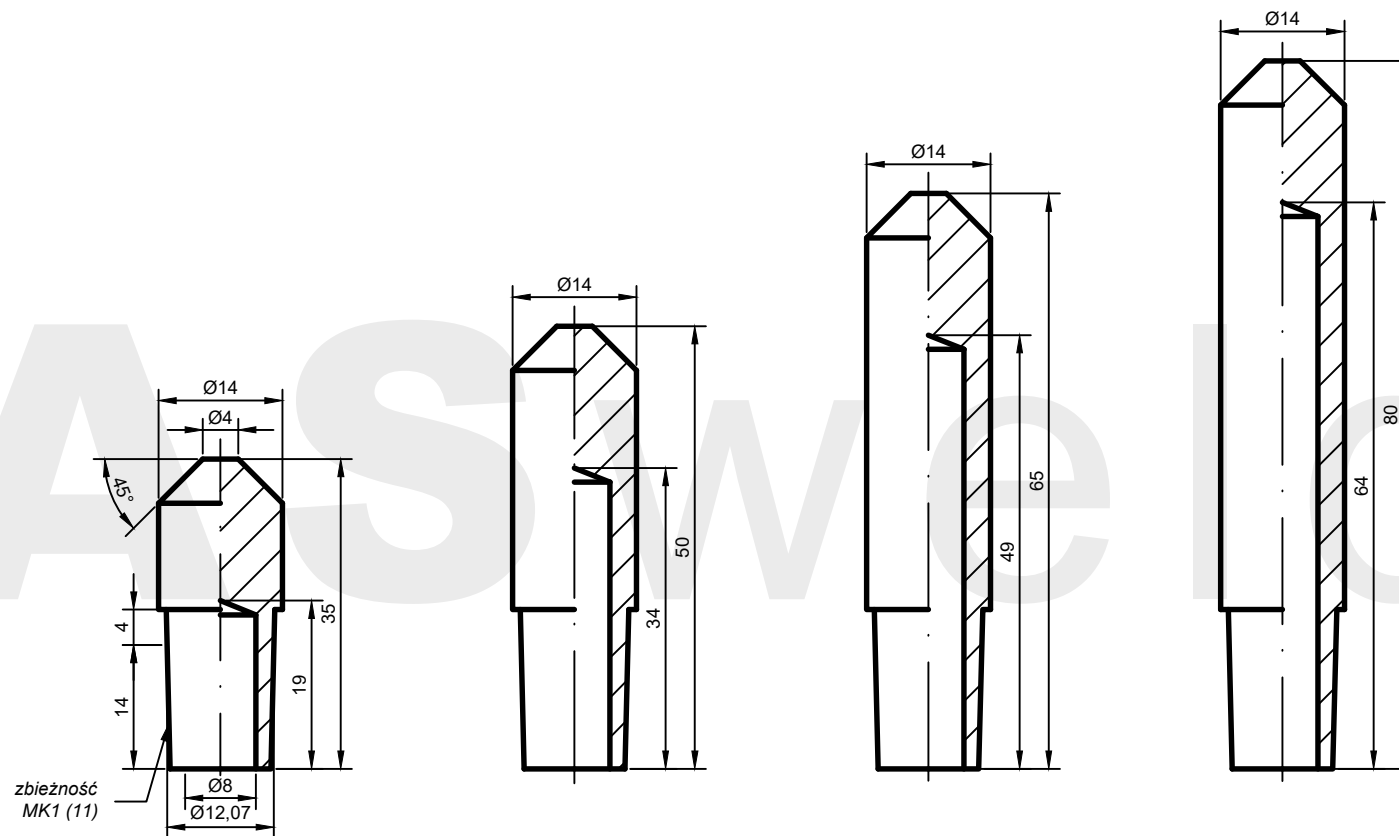
ELEKTRODA PROSTA
forma B

Chwył elektrody

11

Karta katalogowa

01-02-02-11



AW: B1(4)-14.35-11

AW: B1(4)-14.50-11*

AW: B1(4)-14.65-11*

AW: B1(4)-14.80-11*

*wykonanie na zamówienie

ASweld

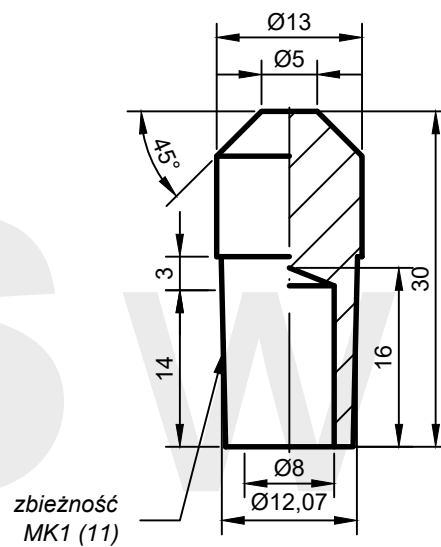
ELEKTRODA PROSTA
forma B1

Chwył elektrody

11

Karta katalogowa

01-02-03-11



AW: B1(5)-13.30-11

*wykonanie na zamówienie

ASweld

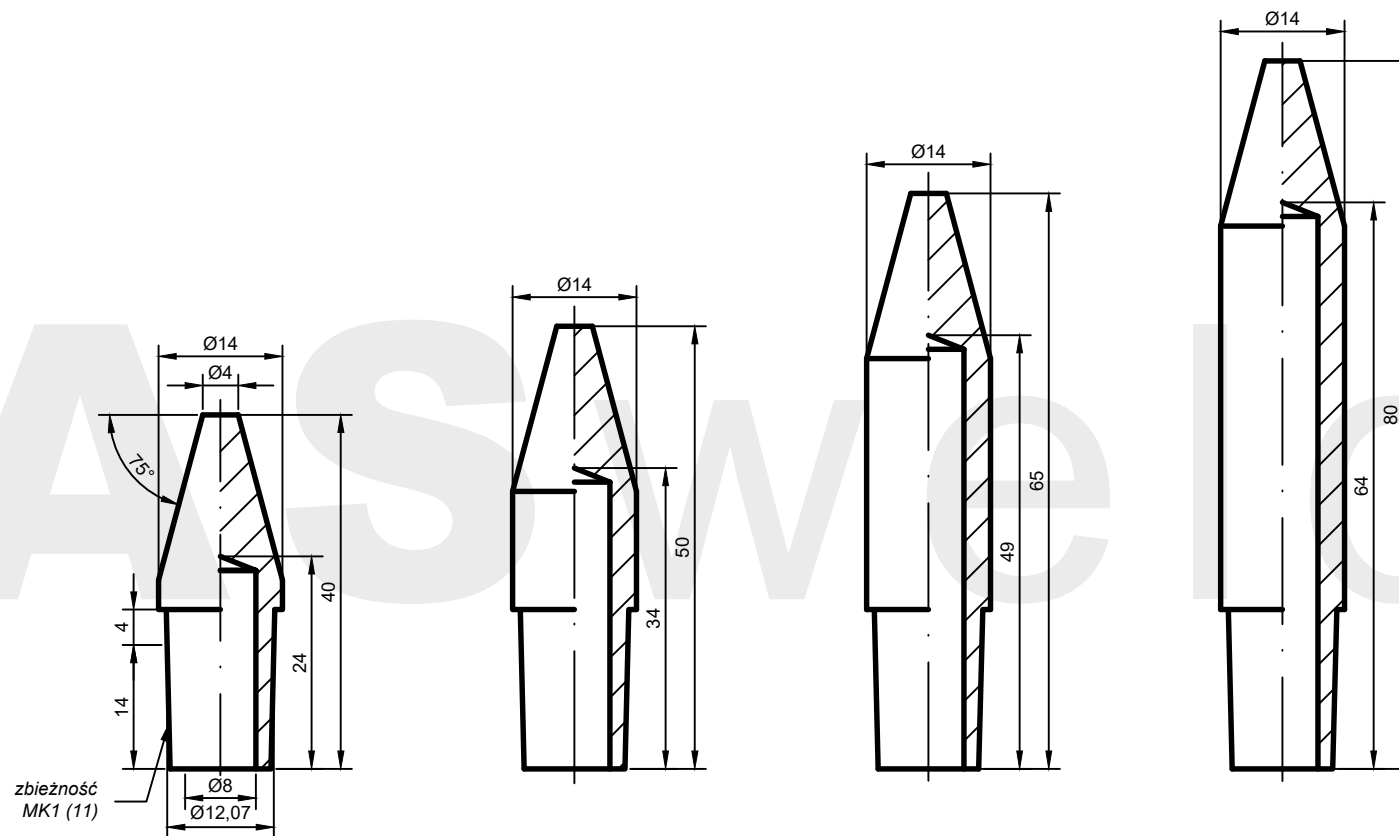
ELEKTRODA PROSTA
forma B1

Chwył elektrody

11

Karta katalogowa

01-02-05-11



AW: B3(4)-14.40-11

AW: B3(4)-14.50-11*

AW: B3(4)-14.65-11*

AW: B3(4)-14.80-11*

*wykonanie na zamówienie

ASweld

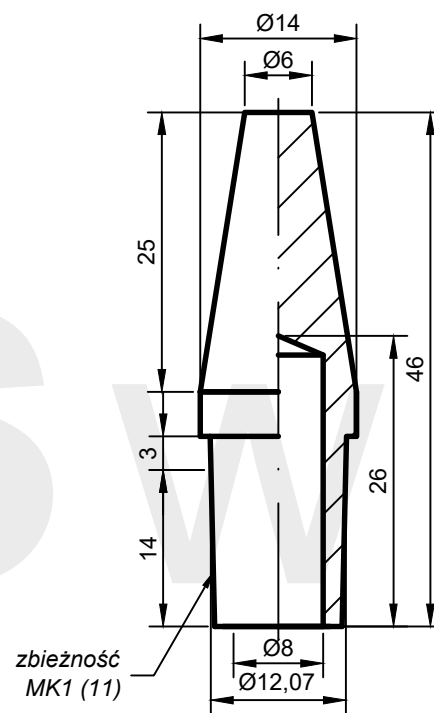
ELEKTRODA PROSTA
forma B3

Chwyt elektrody

11

Karta katalogowa

01-02-06-11



AW: B4(6)-14.46-11*

*wykonanie na zamówienie

ASweld

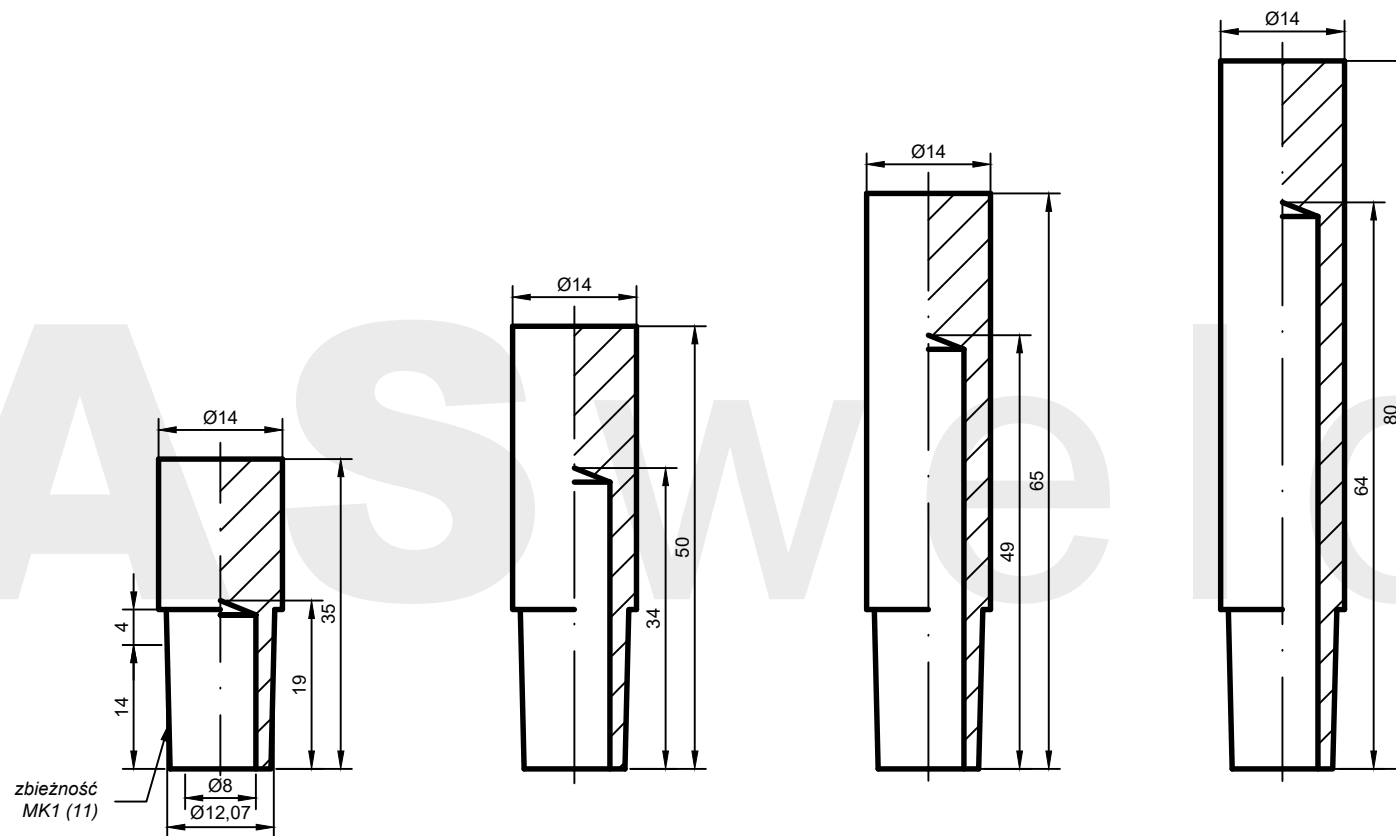
ELEKTRODA PROSTA
forma B4

Chwył elektrody

11

Karta katalogowa

01-02-07-11



AW: C-14.35-11

AW: C-14.50-11*

AW: C-14.65-11*

AW: C-14.80-11*

*wykonanie na zamówienie

ASweld

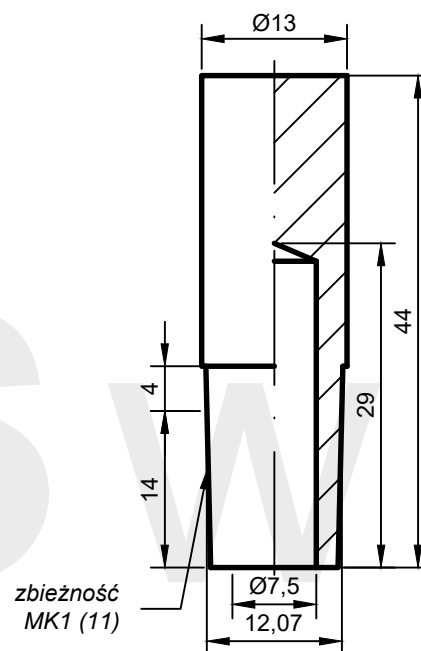
ELEKTRODA PROSTA
forma C

Chwyt elektrody

11

Karta katalogowa

01-03-01-11



AW: C-13.44-11*

*wykonanie na zamówienie

ASweld

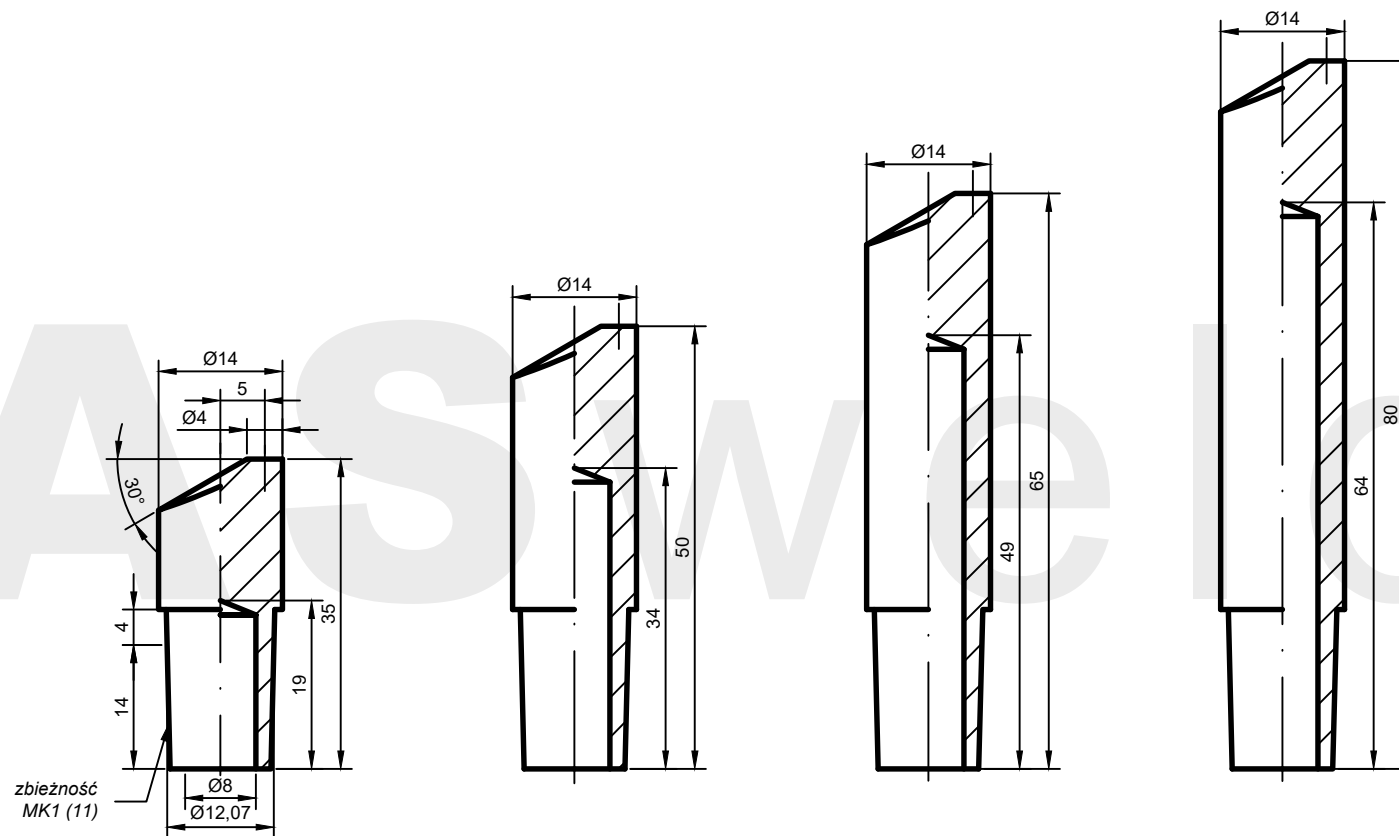
ELEKTRODA PROSTA
forma C

Chwył elektrody

11

Karta katalogowa

01-03-02-11



AW: D(4)-14.35-11

AW: D(4)-14.50-11*

AW: D(4)-14.65-11*

AW: D(4)-14.80-11*

*wykonanie na zamówienie

ASweld

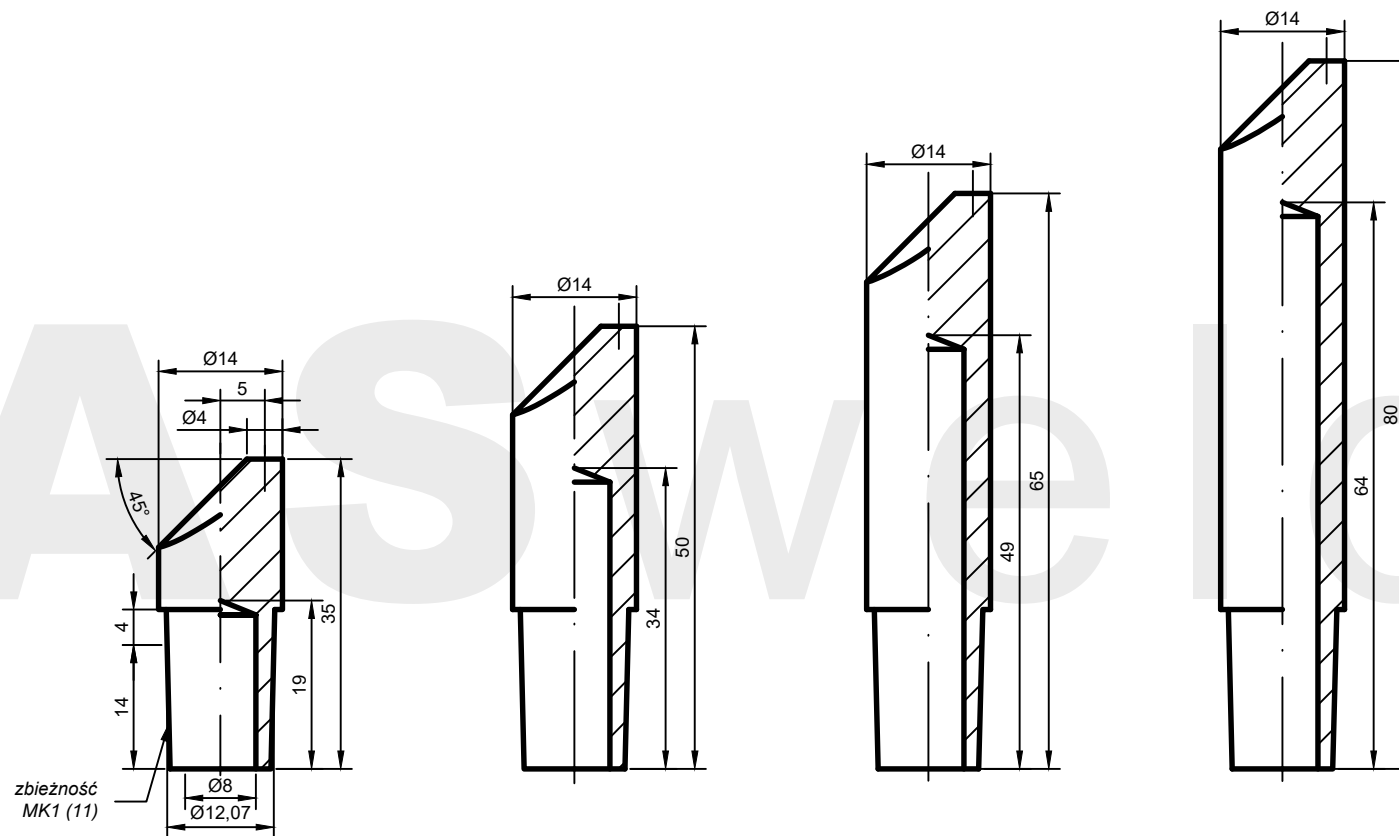
ELEKTRODA PROSTA
forma D

Chwył elektrody

11

Karta katalogowa

01-04-01-11



AW: D1(4)-14.35-11

AW: D1(4)-14.50-11*

AW: D1(4)-14.65-11*

AW: D1(4)-14.80-11*

*wykonanie na zamówienie

ASweld

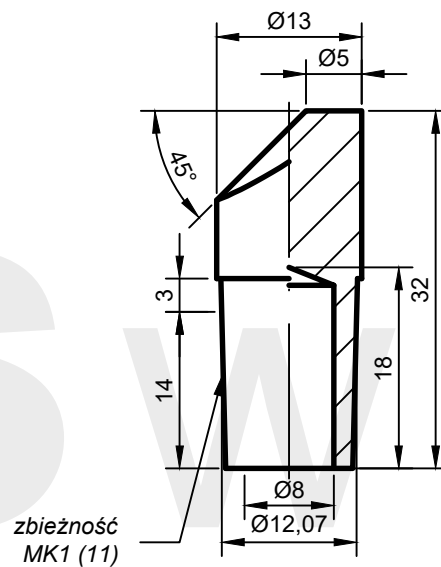
ELEKTRODA PROSTA
forma D1

Chwył elektrody

11

Karta katalogowa

01-04-02-11



AW:D1(5)-13.32-11*

*wykonanie na zamówienie

ASweld

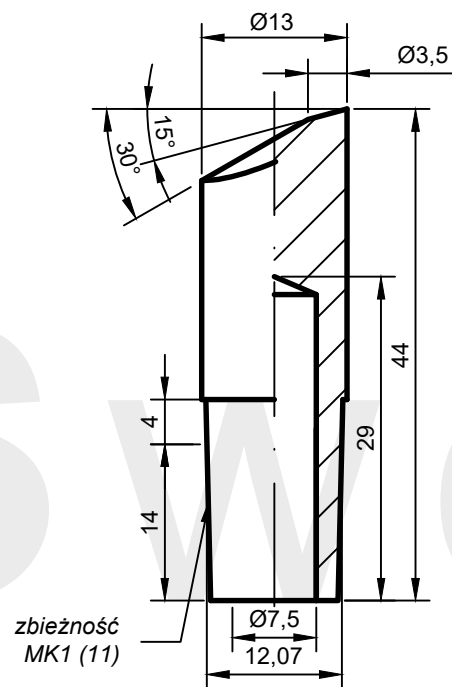
ELEKTRODA PROSTA
forma D1

Chwył elektrody

11

Karta katalogowa

01-04-03-11



AW: D(3,5)-13.44-11*

*wykonanie na zamówienie

ASweld

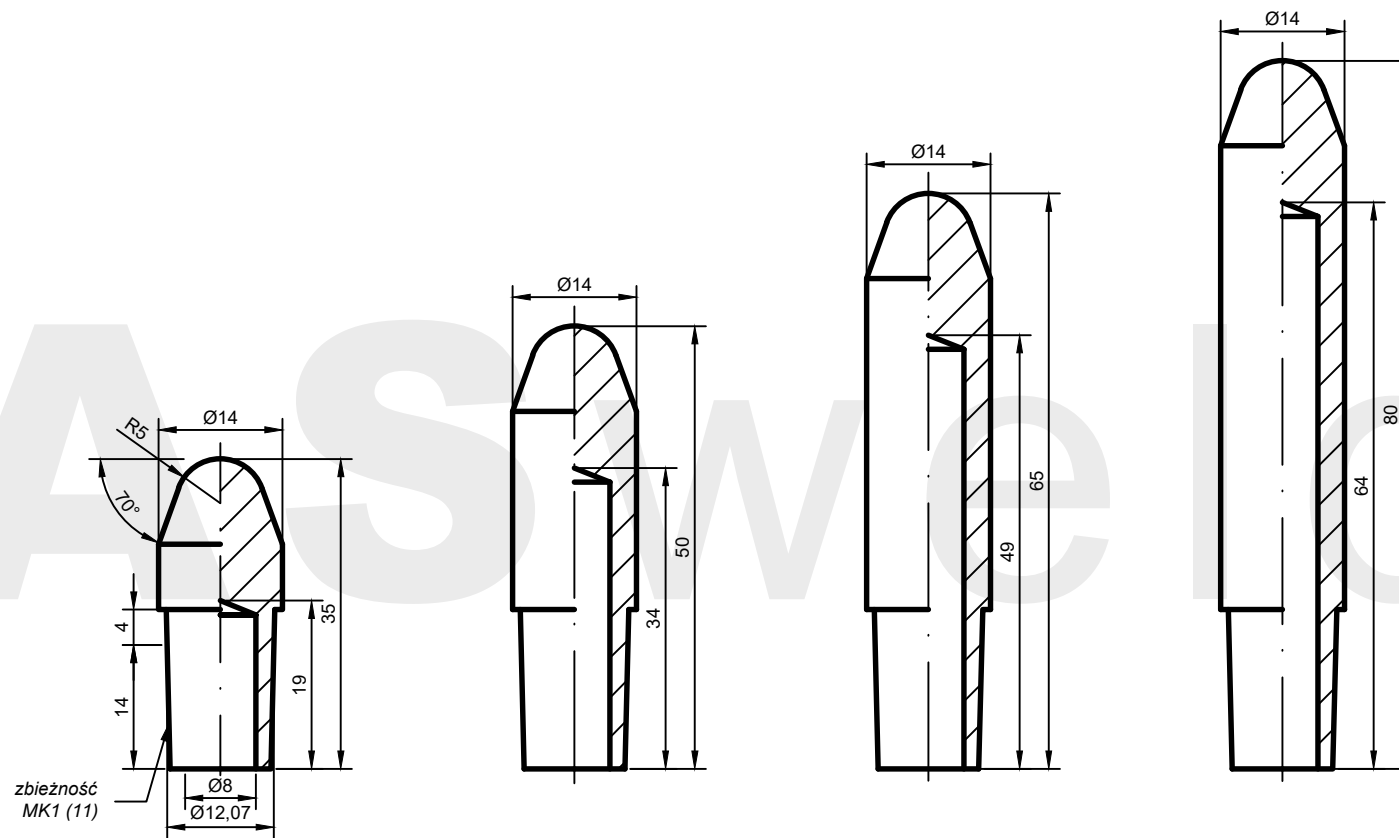
ELEKTRODA PROSTA
forma D

Chwył elektrody

11

Karta katalogowa

01-04-04-11



AW: E(5)-14.35-11

AW: E(5)-14.50-11*

AW: E(5)-14.65-11*

AW: E(5)-14.80-11*

*wykonanie na zamówienie

ASweld

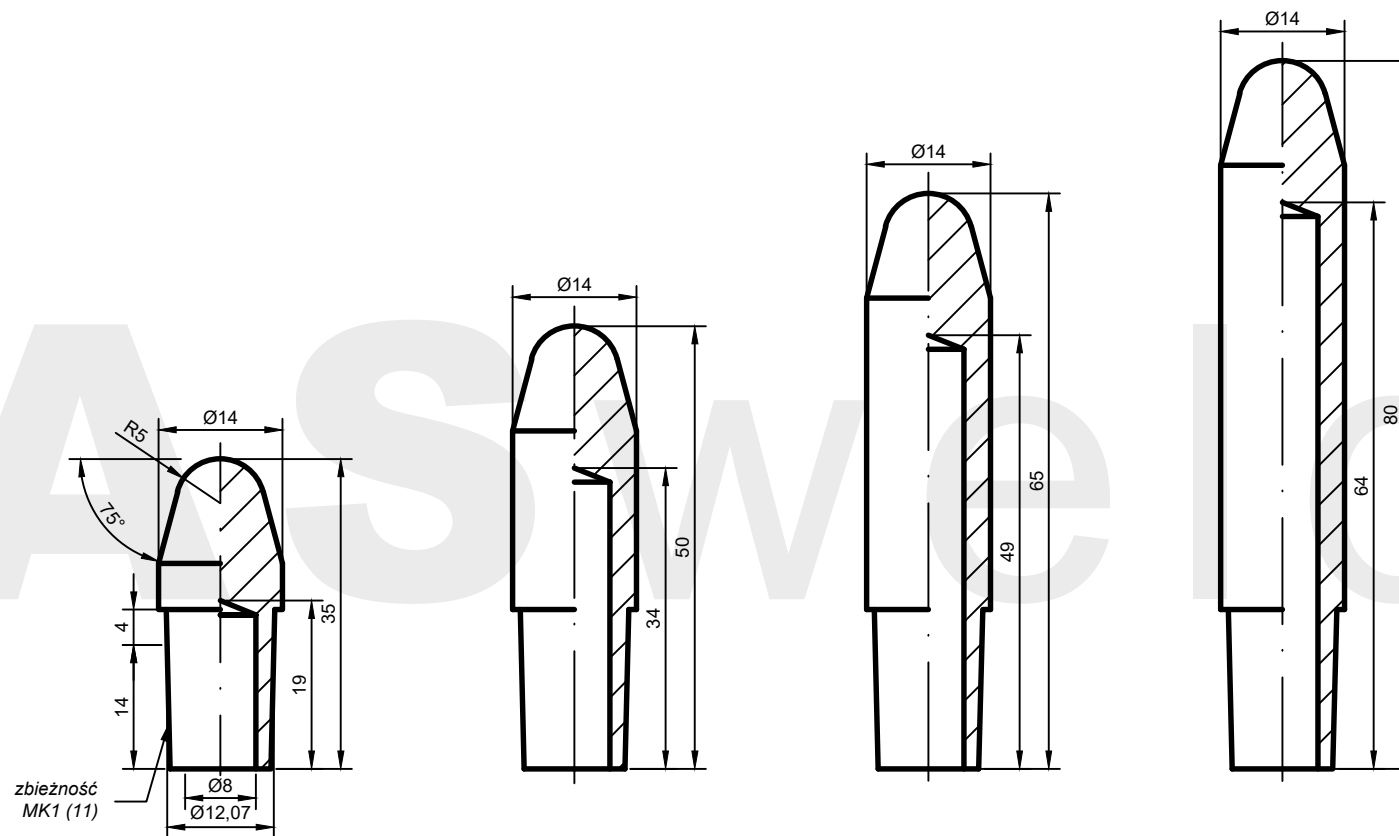
ELEKTRODA PROSTA
forma E

Chwyt elektrody

11

Karta katalogowa

01-05-01-11



AW: E3(5)-14.35-11

AW: E3(5)-14.50-11*

AW: E3(5)-14.65-11*

AW: E3(5)-14.80-11*

*wykonanie na zamówienie

ASweld

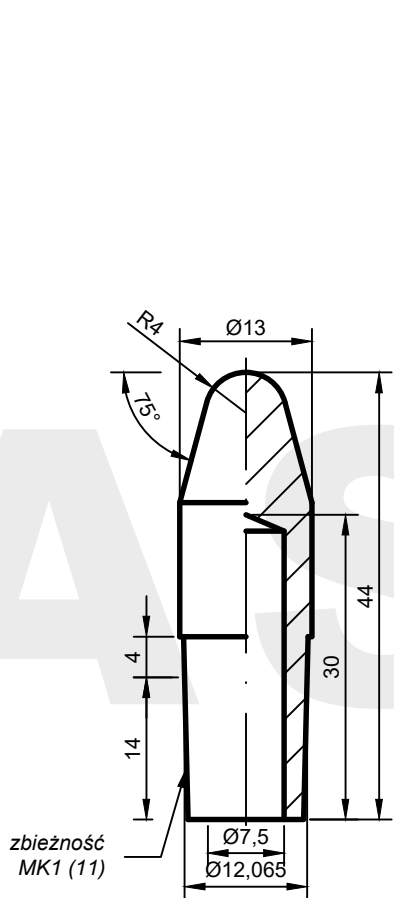
ELEKTRODA PROSTA
forma E3

Chwył elektrody

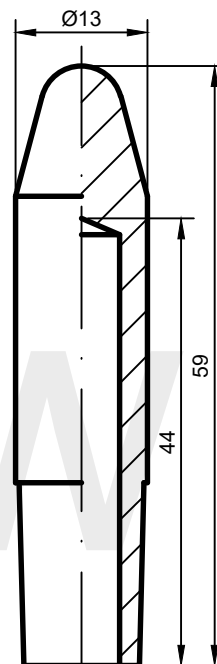
11

Karta katalogowa

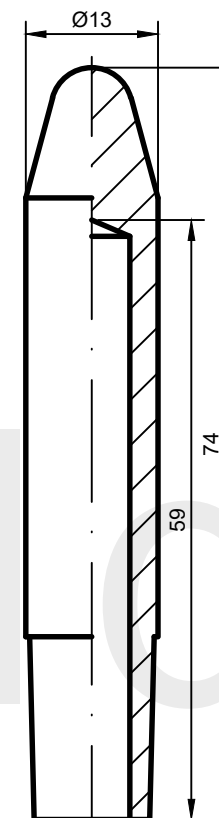
01-05-02-11



AW: E3(4)-13.44-11



AW: E3(4)-13.59-11*



AW: E3(4)-13.74-11*

*wykonanie na zamówienie

ASweld

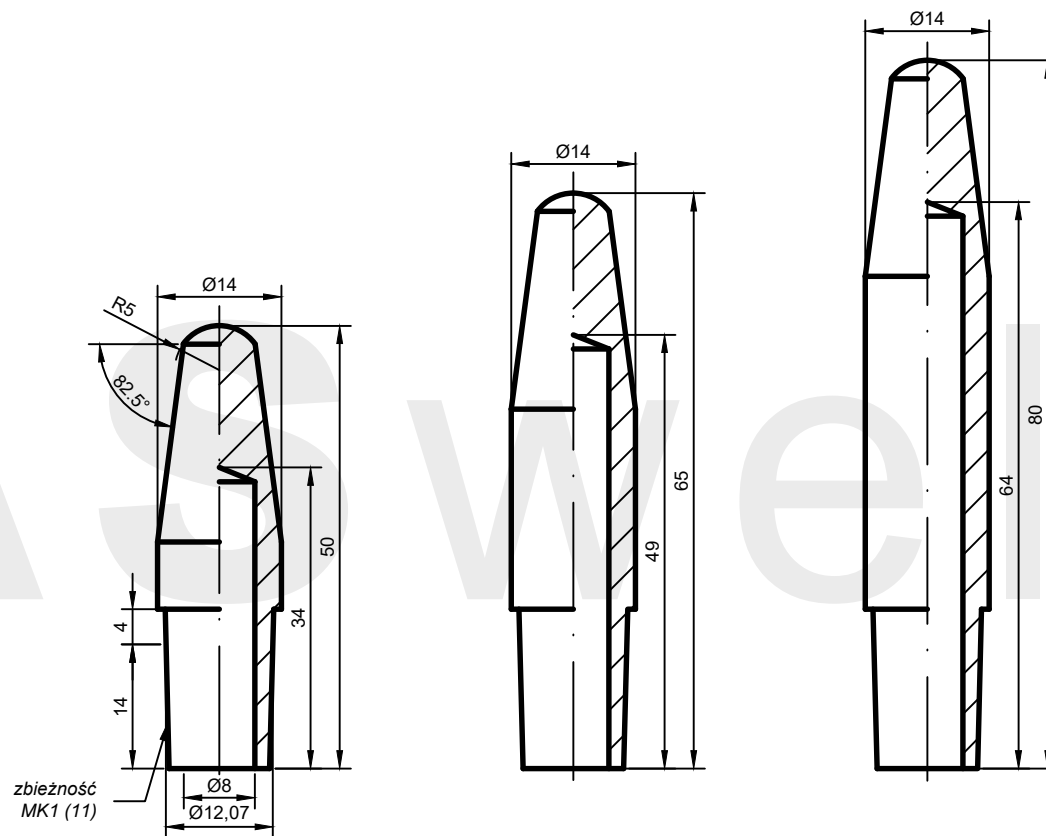
ELEKTRODA PROSTA
forma E3

Chwył elektrody

11

Karta katalogowa

01-05-03-11



AW: E4(5)-14.50-11*

AW: E4(5)-14.65-11*

AW: E4(5)-14.80-11*

*wykonanie na zamówienie

ASweld

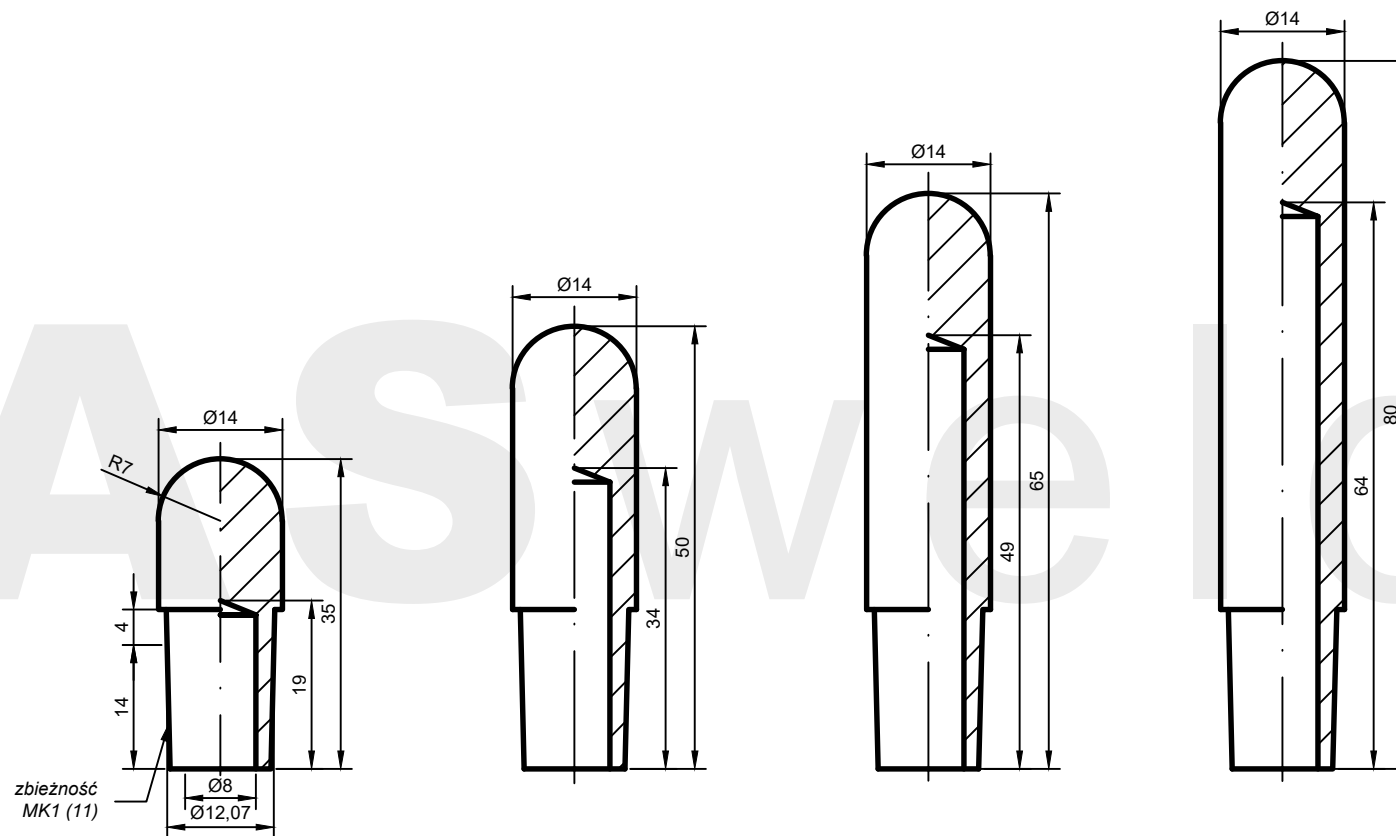
ELEKTRODA PROSTA
forma E4

Chwył elektrody

11

Karta katalogowa

01-05-04-11



AW: F-14.35-11

AW: F-14.50-11*

AW: F-14.65-11*

AW: F-14.80-11*

*wykonanie na zamówienie

ASweld

ELEKTRODA PROSTA
forma F

Chwył elektrody

11

Karta katalogowa

01-06-01-11

ASweld

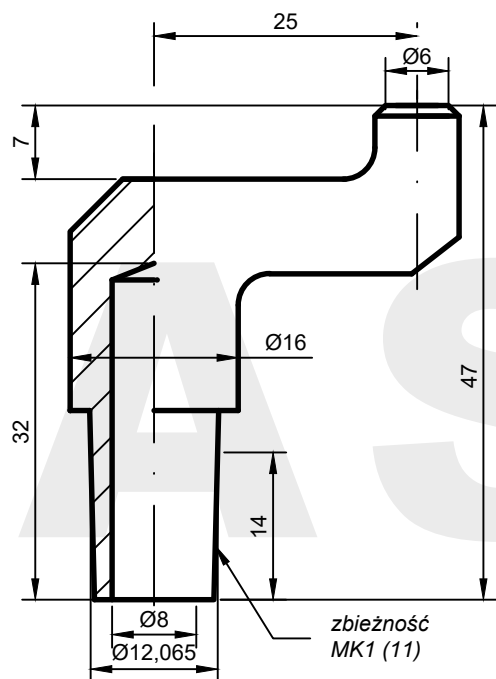
ELEKTRODY ODSADZONE KUTE

STOŻEK NR 11

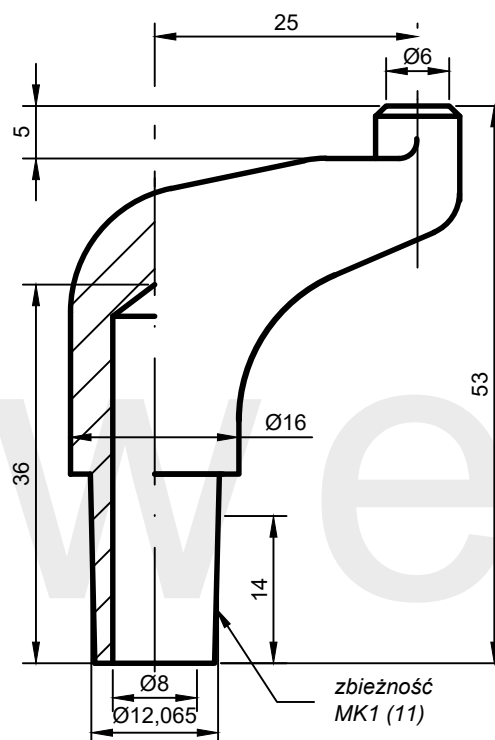
zbieżność MK1 $\varnothing 12,065$

Karty katalogowe: 02-__-__-11

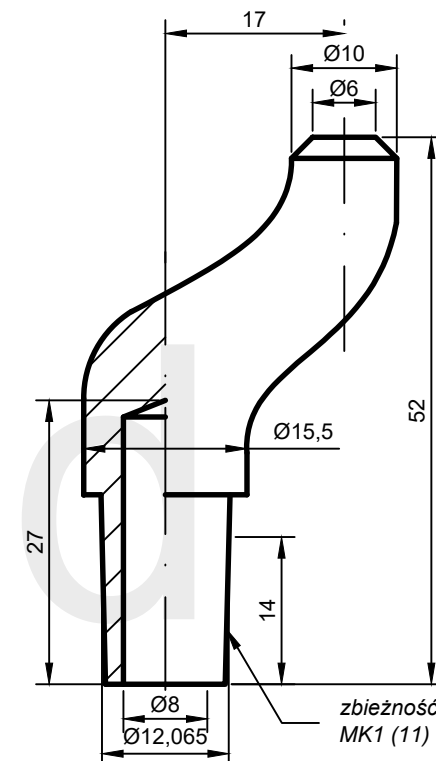




AW: F01(6)-16.47.25-11



AW: F02(6)-16.53.25-11



AW: F06(6)-15,5.52.17-11

*wykonanie na zamówienie

ASweld

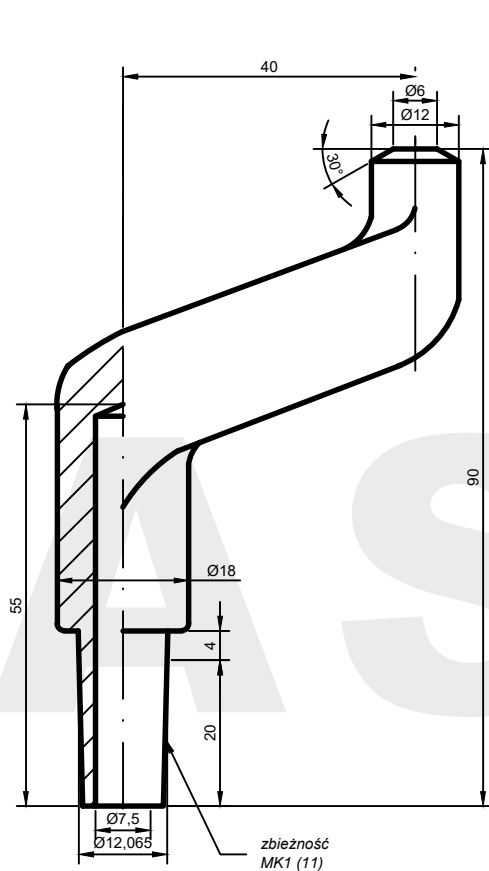
ELEKTRODA ODSADZONA
KUTA

Chwył elektrody

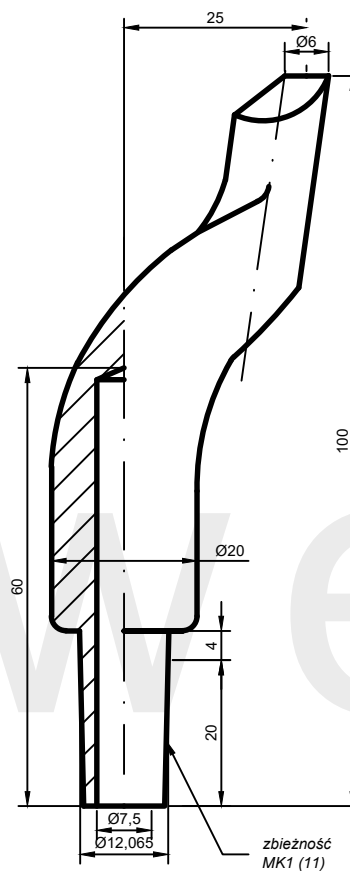
11

Karta katalogowa

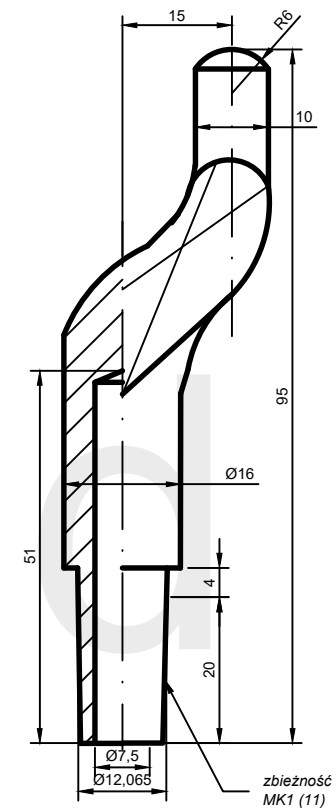
02-01-01-11



AW: F03(6)-18.90.40-11



AW: F04(6)-20.100.25-11



AW: F05(6)-16.95.15-11

*wykonanie na zamówienie

ASweld

ELEKTRODA ODSADZONA
KUTA

Chwyt elektrody

11

Karta katalogowa

02-01-02-11

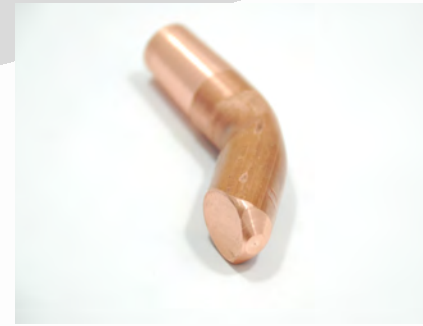
ASweld

ELEKTRODY ODSADZONE GIĘTE

STOŻEK NR 11

zbieżność MK1 Ø12,065

Karty katalogowe: 03-__-__-11



ASweld

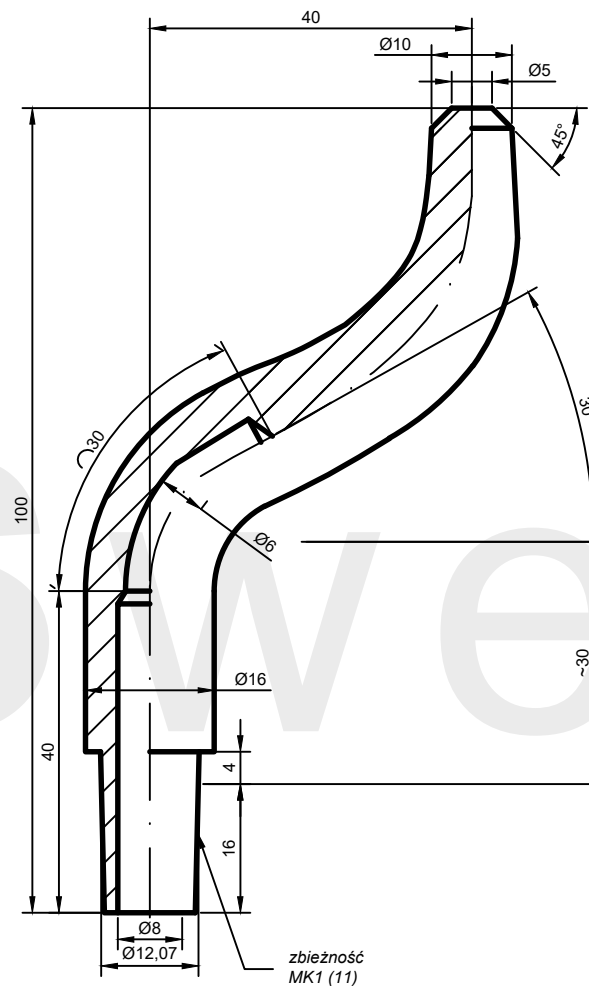
ELEKTRODY ODSADZONE PODWÓJNIE GIĘTE

STOŻEK NR 11

zbieżność MK1 $\varnothing 12,065$

Karty katalogowe: 04-__-__-11





AW: G2B1(5)-16.100.40-11*

*wykonanie na zamówienie

ASweld

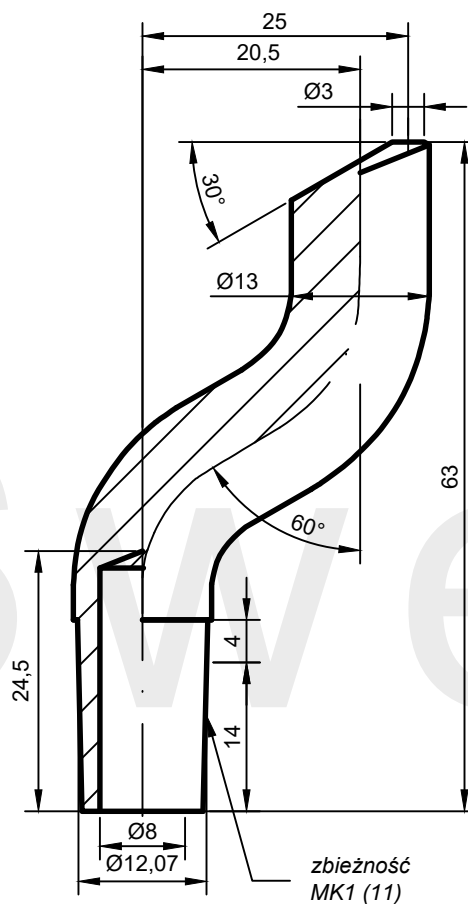
**ELEKTRODA ODSADZONA
PODWÓJNIE GIĘTA**

Chwył elektrody

11

Karta katalogowa

04-01-01-11



AW: G2D(3)-13.63.25-11*

*wykonanie na zamówienie

ASweld

ELEKTRODA ODSADZONA
 PODWÓJNIE GIĘTA

Chwył elektrody

11

Karta katalogowa

04-01-02-11

ASweld

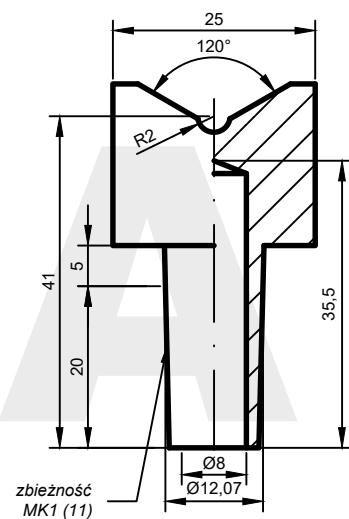
ELEKTRODY PŁASKIE

STOŻEK NR 11

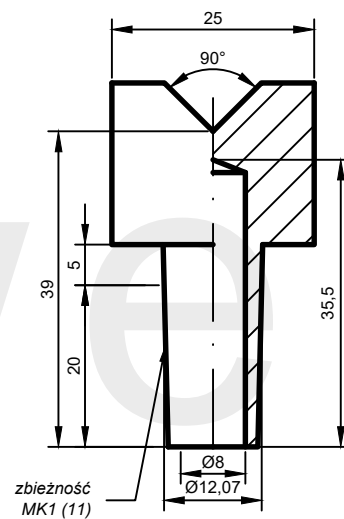
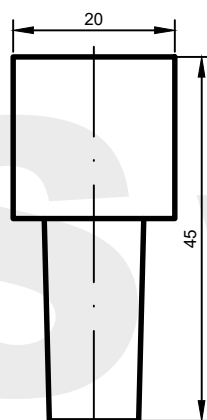
zbieżność MK1 $\text{Ø}12,065$

Karty katalogowe: 05-__-__-11

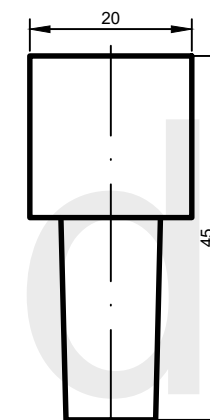




AW: V120-20x25.45-11*



AW: V90-20x25.45-11*



*wykonanie na zamówienie

ASweld

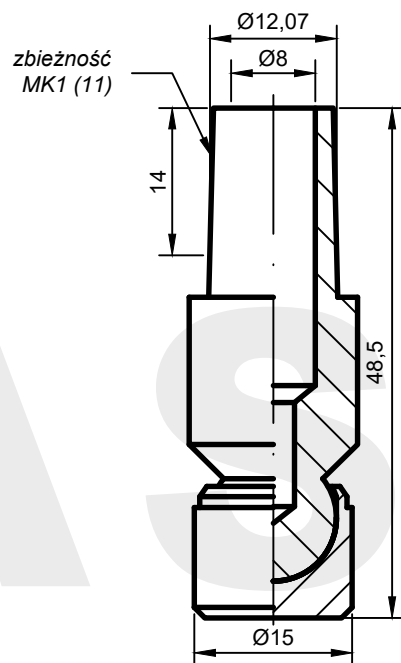
ELEKTRODA PŁASKA
Z PRYZMĄ

Chwył elektrody

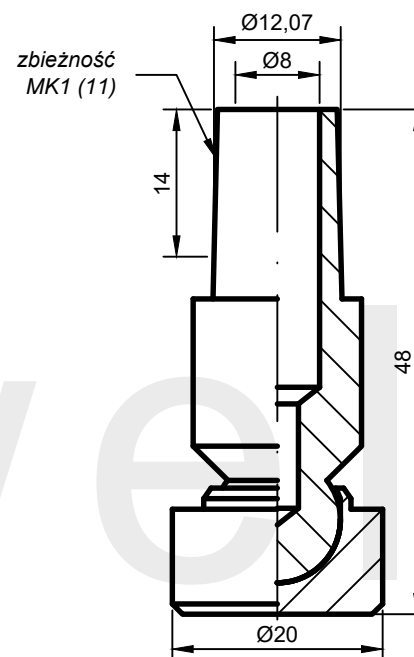
11

Karta katalogowa

05-02-01-11



AW: PK12-15.48-11*



AW: PK12-20.48-11*

*wykonanie na zamówienie

ASweld

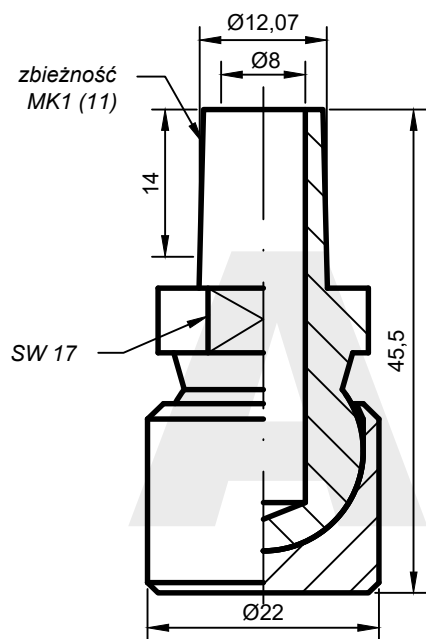
ELEKTRODA WAHLIWA
przegub K12

Chwył elektrody

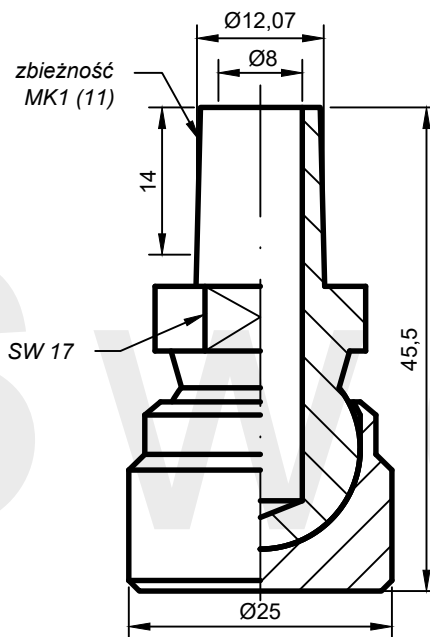
11

Karta katalogowa

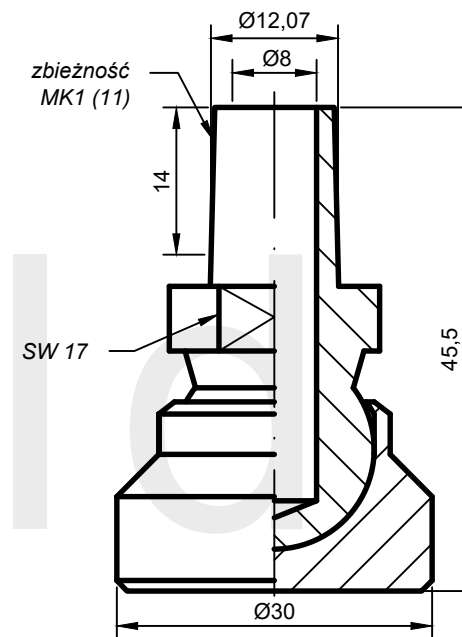
05-04-01-11



AW: PK19-22.46-11



AW: PK19-25.46-11



AW: PK19-30.46-11*

*wykonanie na zamówienie

ASweld

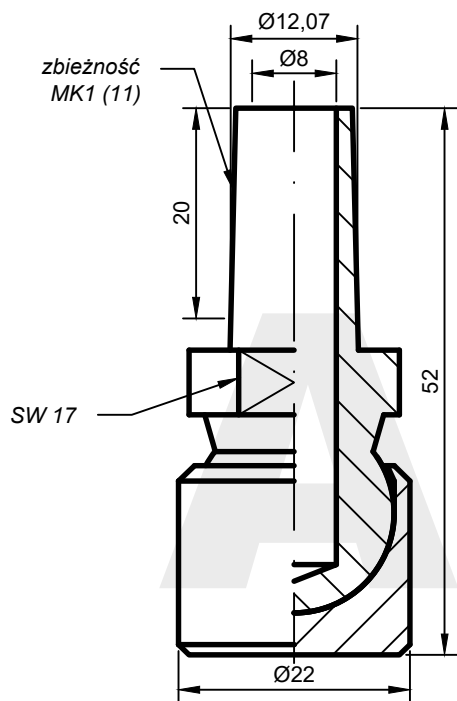
ELEKTRODA WAHLIWA
przegub K19

Chwył elektrody

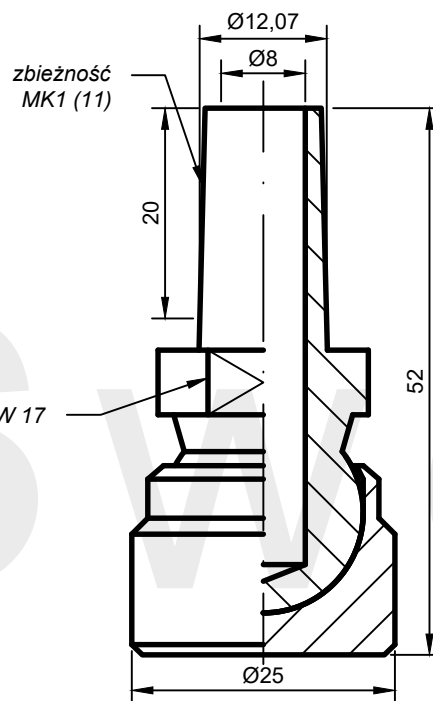
11

Karta katalogowa

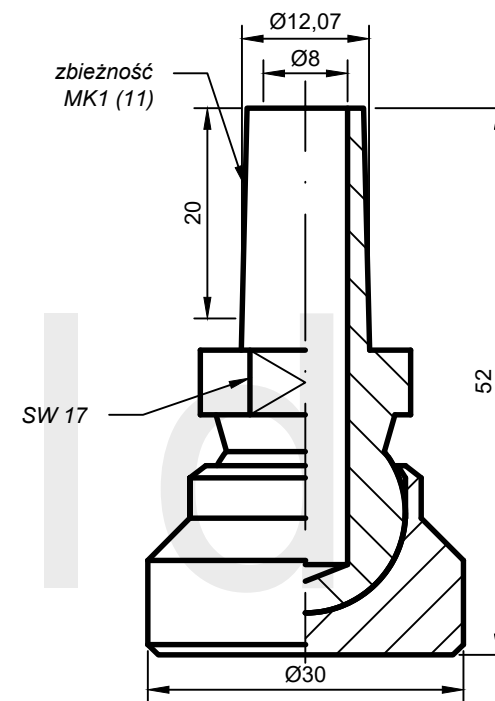
05-04-02-11



AW: PK19-22.52-11*



AW: PK19-25.52-11*



AW: PK19-30.52-11*

*wykonanie na zamówienie

ASweld

ELEKTRODA WAHLIWA
przegub K19

Chwył elektrody

11

Karta katalogowa

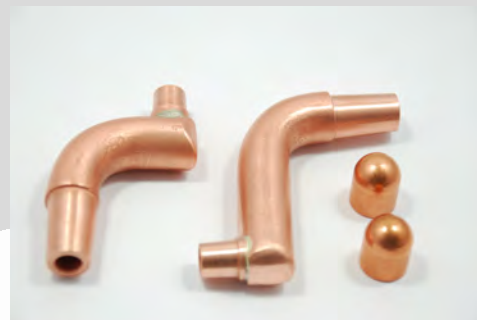
05-04-03-11

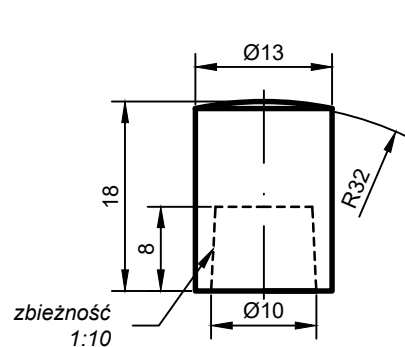
OBSADY ELEKTROD NASADKOWYCH

STOŻEK NR 11

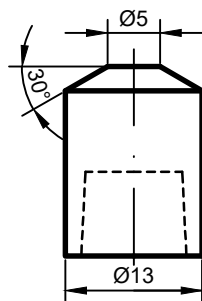
zbieżność MK1 $\varnothing 12,065$

Karty katalogowe: 06-__-__-11

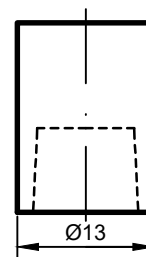




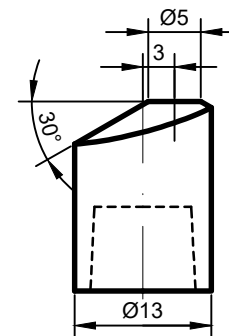
Typ: N-A13



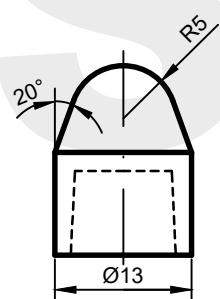
Typ: N-B13



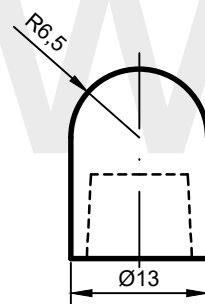
Typ: N-C13



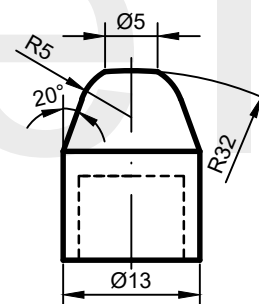
Typ: N-D13



Typ: N-E13



Typ: N-F13



Typ: N-G13

*wykonanie na zamówienie

ASweld

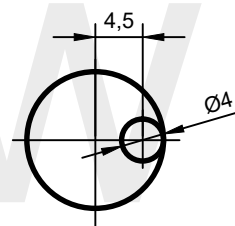
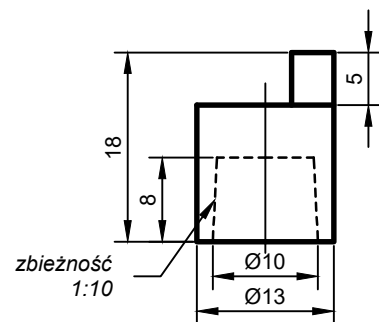
ELEKTRODA NASADKOWA
rozmiar 13

Chwyt elektrody

51

Karta katalogowa

06-00-01-51



AW: N-C13(4.5)

*wykonanie na zamówienie

ASweld

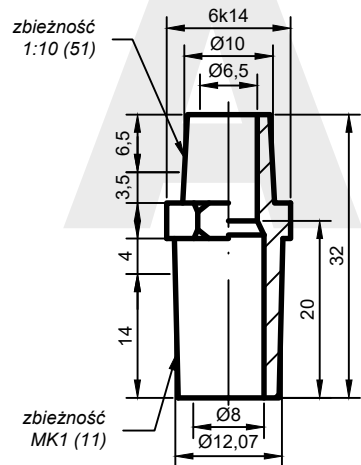
ELEKTRODA NASADKOWA
rozmiar 13

Chwył elektrody

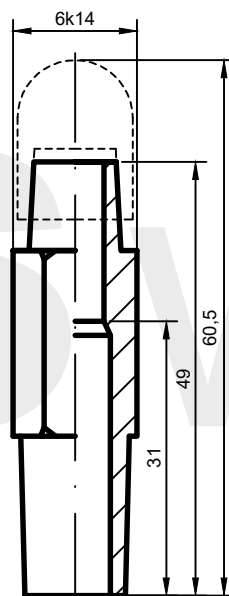
51

Karta katalogowa

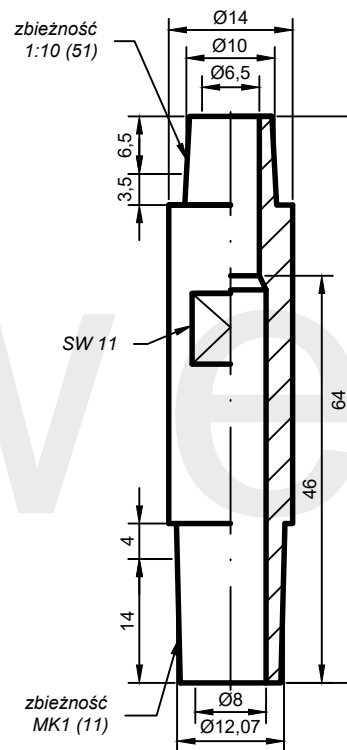
06-00-02-51



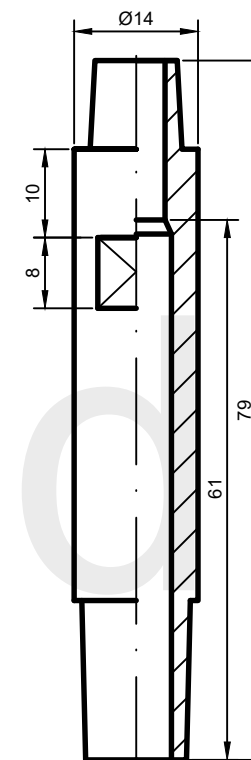
AW: TR51-6k14.32-11



AW: TR51-6k14.49-11

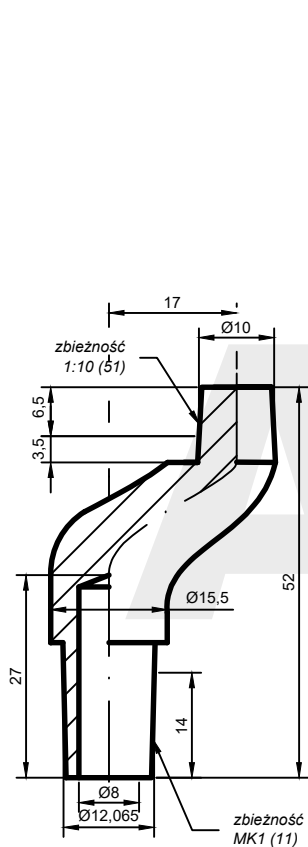


AW: TR51-14.64-11

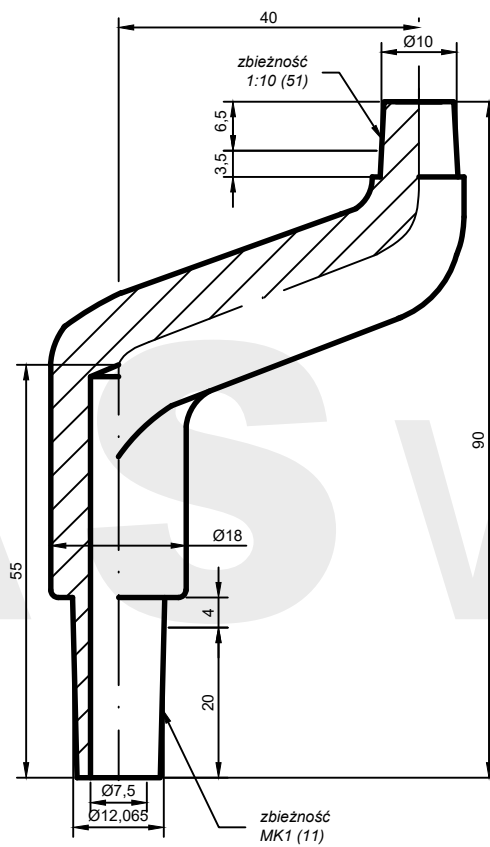


AW: TR51-14.79-11*

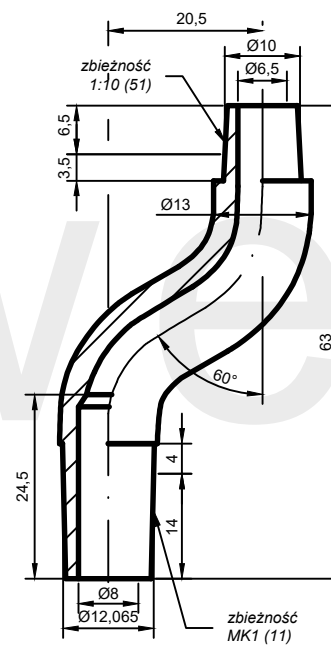
*wykonanie na zamówienie



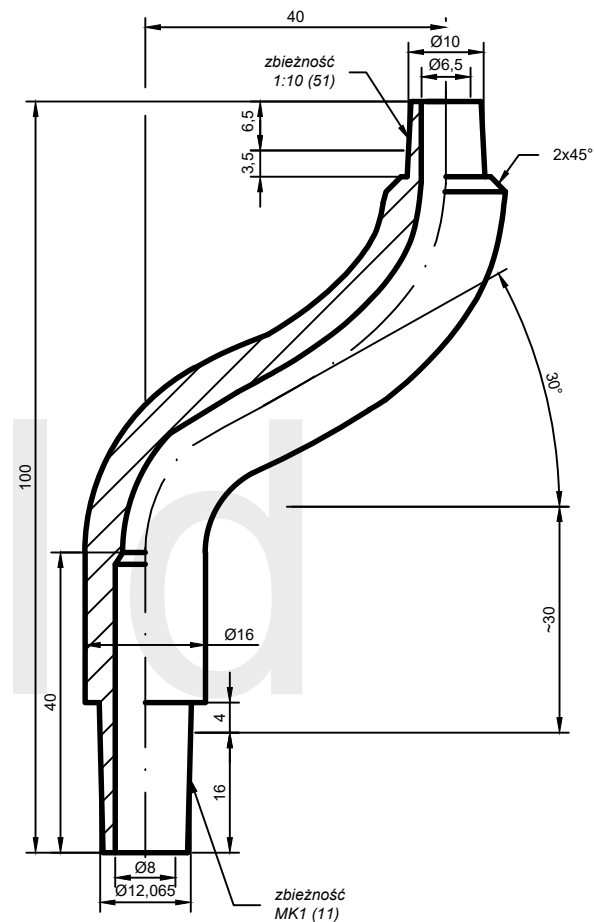
AW: TR51-F06-11*



AW: TR51-F03-11*



AW: TR51-13.63.20,5-11*



AW: TR51-16.100.40-11*

*wykonanie na zamówienie

ASweld

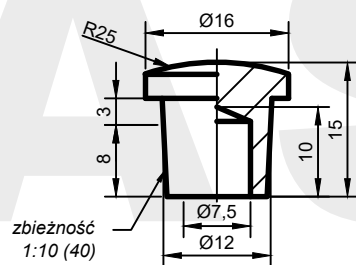
OBSADY ELEKTROD GRZYBKOWYCH I WKRETEK ELEKTRODOWYCH

STOŻEK NR 11

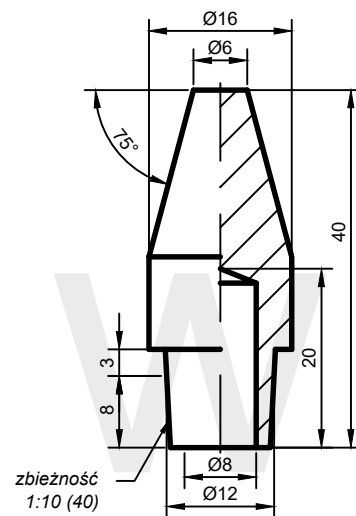
zbieżność MK1 Ø12,065

Karty katalogowe: 07-__-__-11

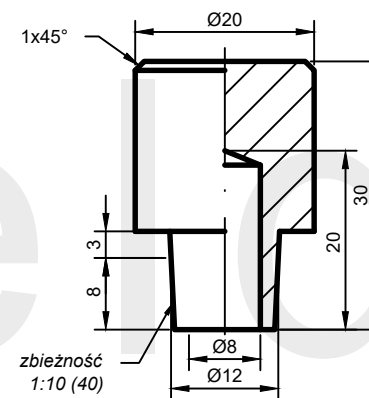




AW: A(25)-16.15-40



AW: B3(6)-16.40-40



AW: C-20.30-40

*wykonanie na zamówienie

ASweld

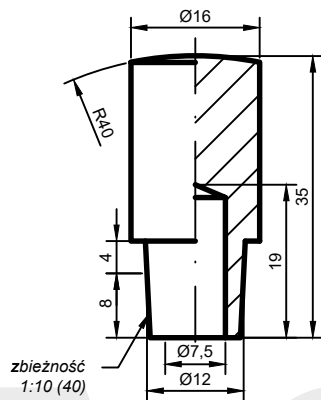
ELEKTRODA GRZYBKOWA

Chwyt elektrody

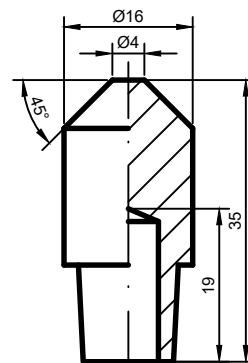
40

Karta katalogowa

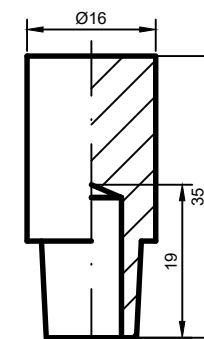
07-00-01-40



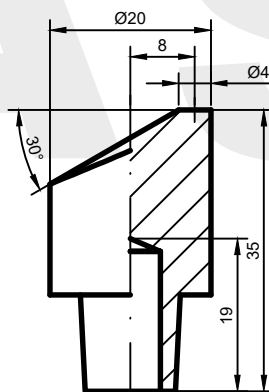
AW: A(40)-16.35-40



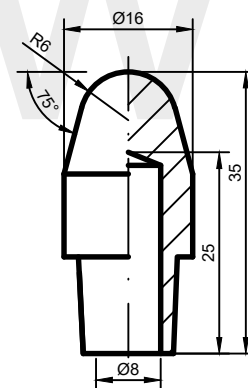
AW: B1(4)-16.35-40



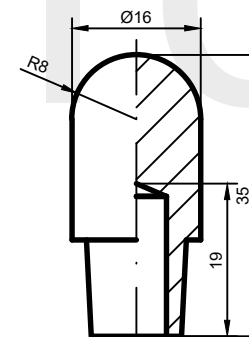
AW: C-16.35-40



AW: D(4)-20.35-40



AW: E3(6)-16.35-40



AW: F-16.35-40

*wykonanie na zamówienie

ASweld

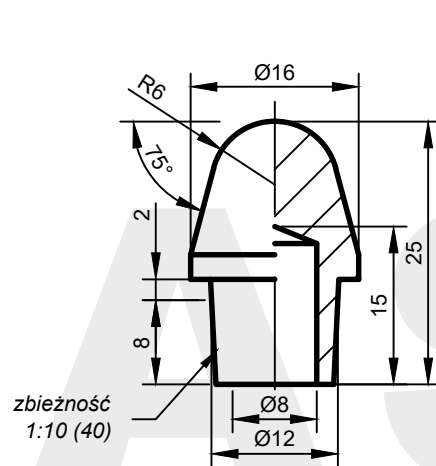
ELEKTRODA GRZYBKOWA

Chwyt elektrody

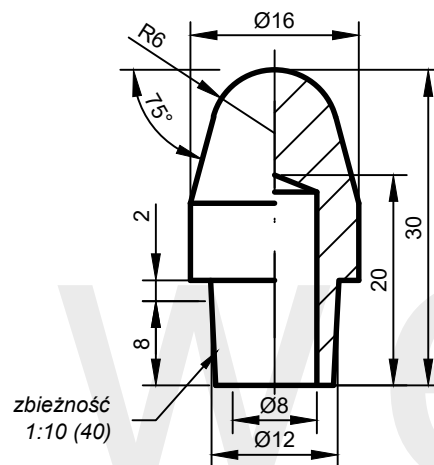
40

Karta katalogowa

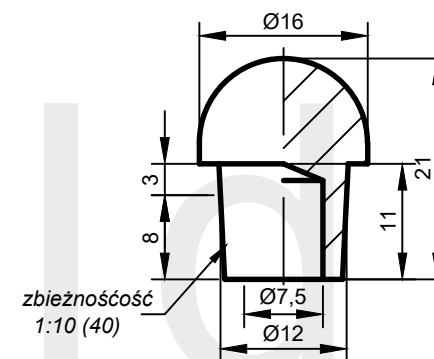
07-00-02-40



AW: E3(6)-16.25-40



AW: E3(6)-16.30-40



AW: F-16.21-40

*wykonanie na zamówienie

ASweld

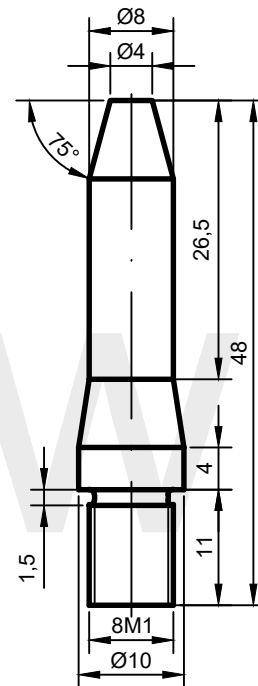
ELEKTRODA GRZYBKOWA

Chwyt elektrody

40

Karta katalogowa

07-00-03-40



AW: B3(4)-10(8).48-8M1

*wykonanie na zamówienie

ASweld

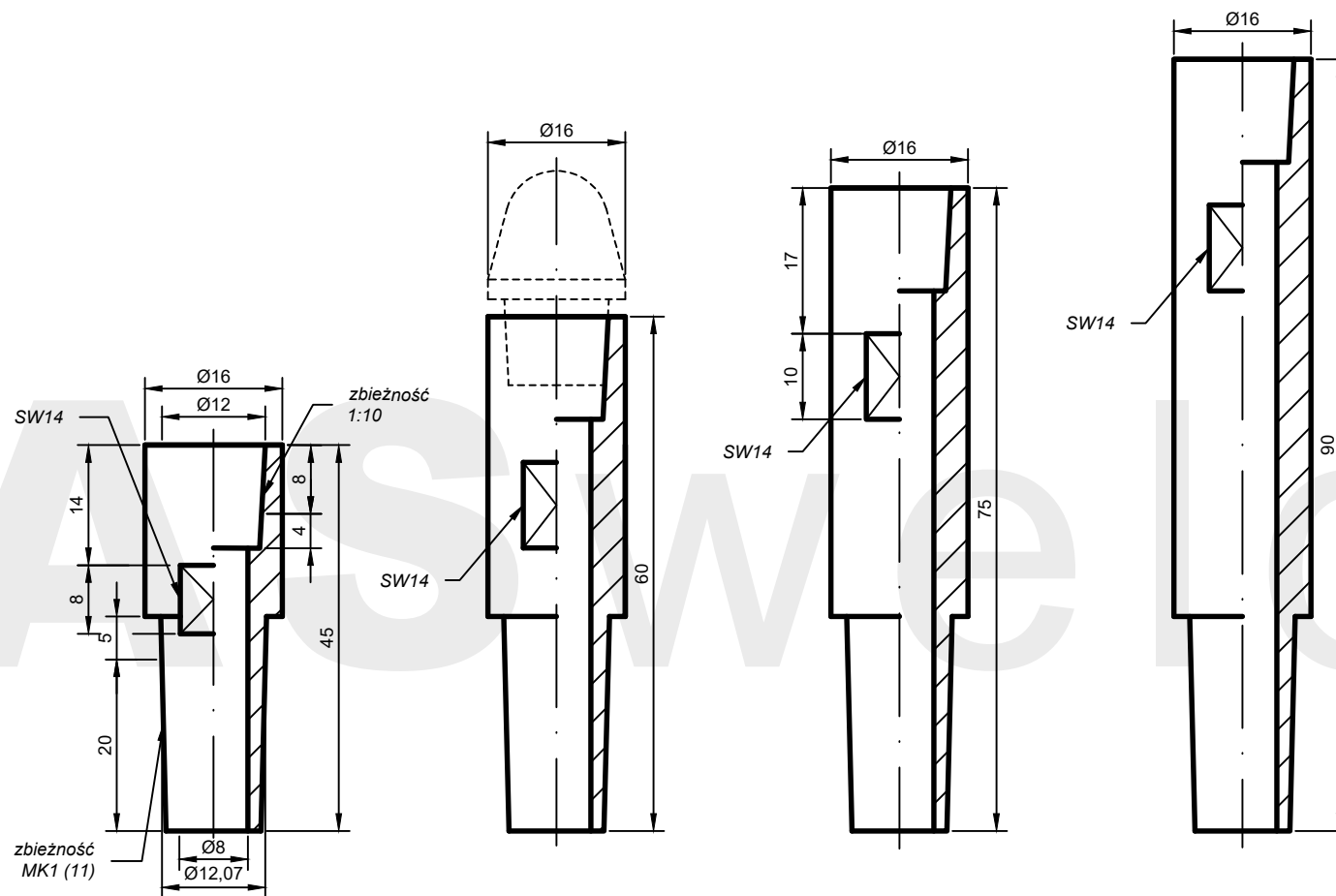
WKRETKA ELEKTRODOWA

Mocowanie

8M1

Karta katalogowa

07-00-04-8M1



AW: GN40-16.45-11

AW: GN40-16.60-11

AW: GN40-16.75-11*

AW: GN40-16.90-11*

*wykonanie na zamówienie

ASweld

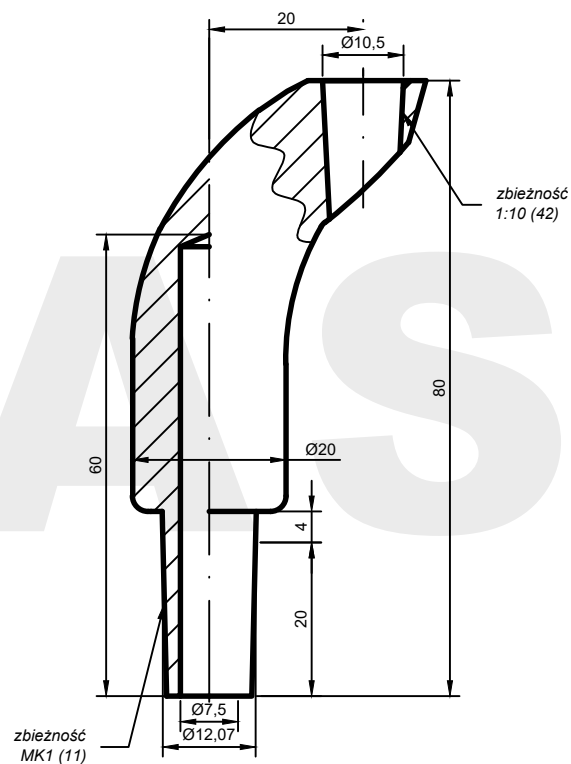
OBSADA ELEKTROD GRZYBKOWYCH
PROSTA

Mocowanie

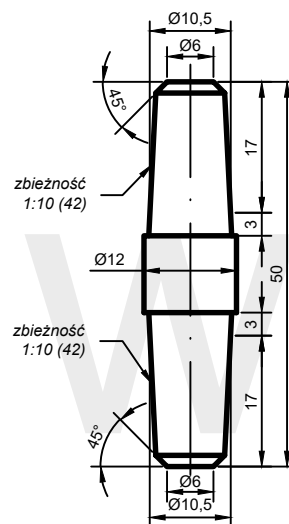
11/40

Karta katalogowa

07-01-01-11

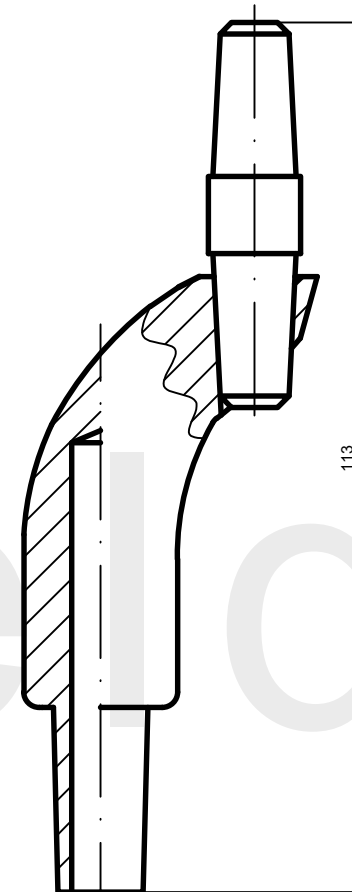


AW: GN42-20.80.20-11



AW: B42(6)-12.50-42(17)

AW: B42(6)-12.50-42(17)Be*



*wykonanie na zamówienie

ASweld

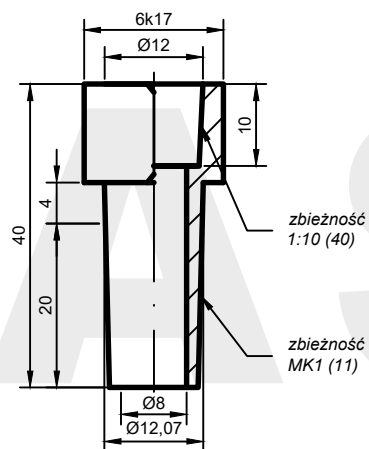
ADAPTER ELEKTRODOWY
GNIAZDO ODSADZONE Z ELEKTRODĄ BERYLOWĄ

Mocowanie

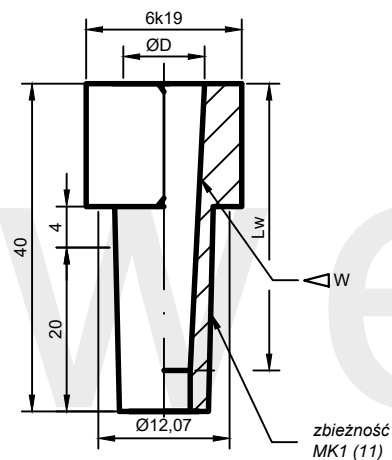
11

Karta katalogowa

07-03-01-11



AW: GN40-6k17.40-11



AW: GN\triangleleftW-6k19.40-11

$\triangleleft W$	$\varnothing D$	Lw
43*	$\varnothing 11,8$	15
42	$\varnothing 10,5$	15
40	$\varnothing 12$	18
31*	$\varnothing 10,8$	15

*wykonanie na zamówienie

ASweld

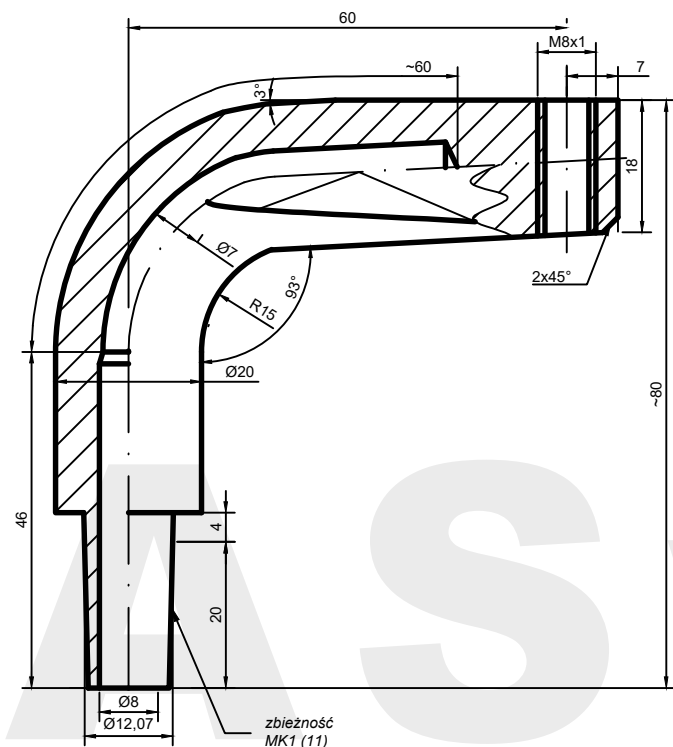
ADAPTER ELEKTRODOWY
REDUKCJA STOŻKÓW

Mocowanie

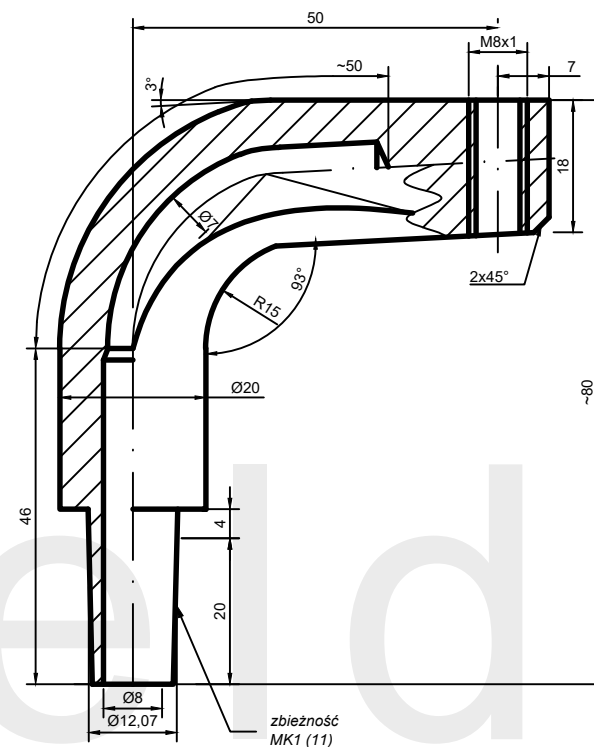
11

Karta katalogowa

07-04-00-11



AW: GN8M1-20.80.60-11



AW: GN8M1-20.80.50-11 *wykonanie na zamówienie

ASweld

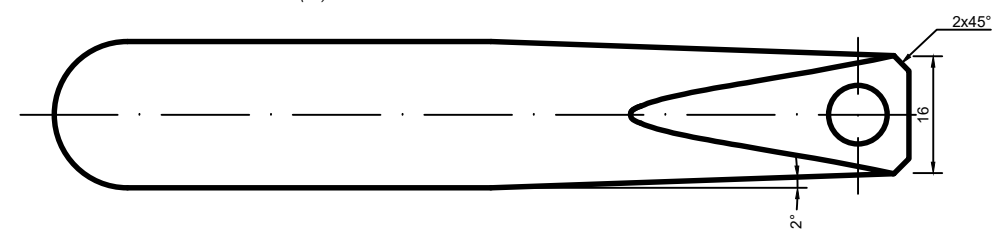
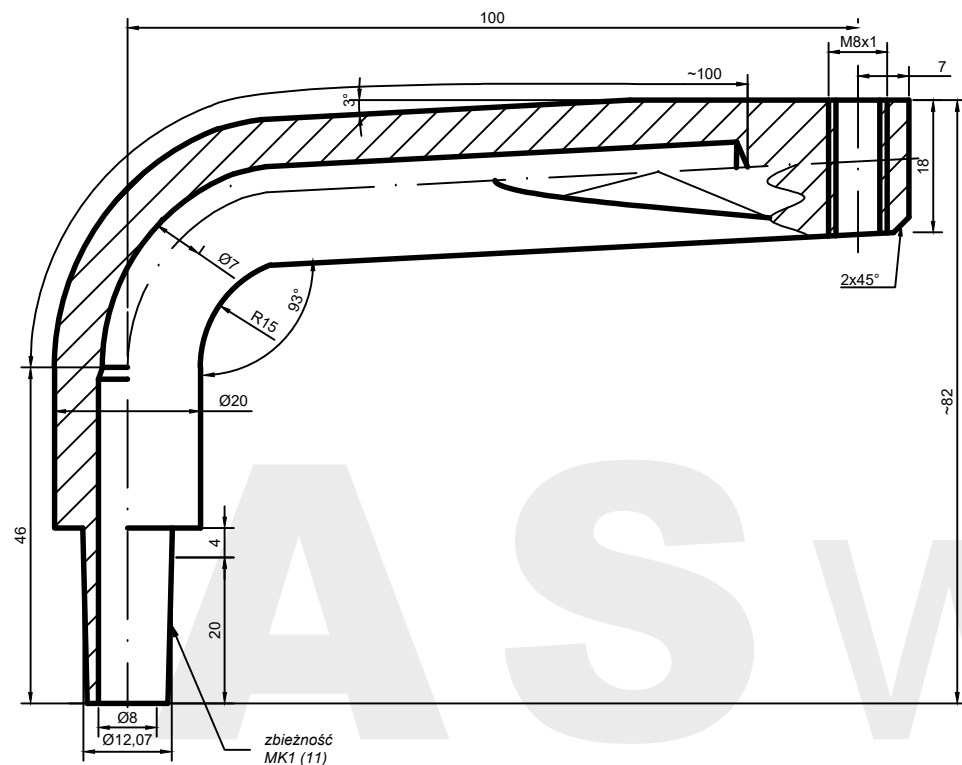
OBSADA DLA WKRETEK ELEKTRODOWYCH
ODSADZONA

Mocowanie

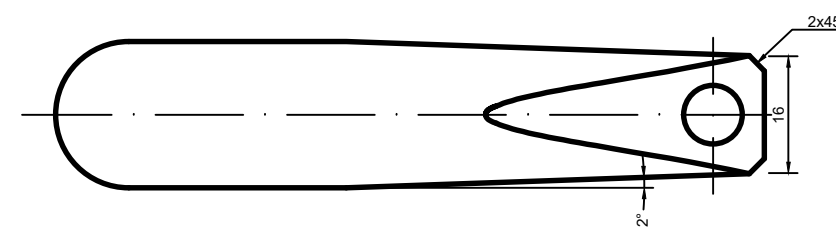
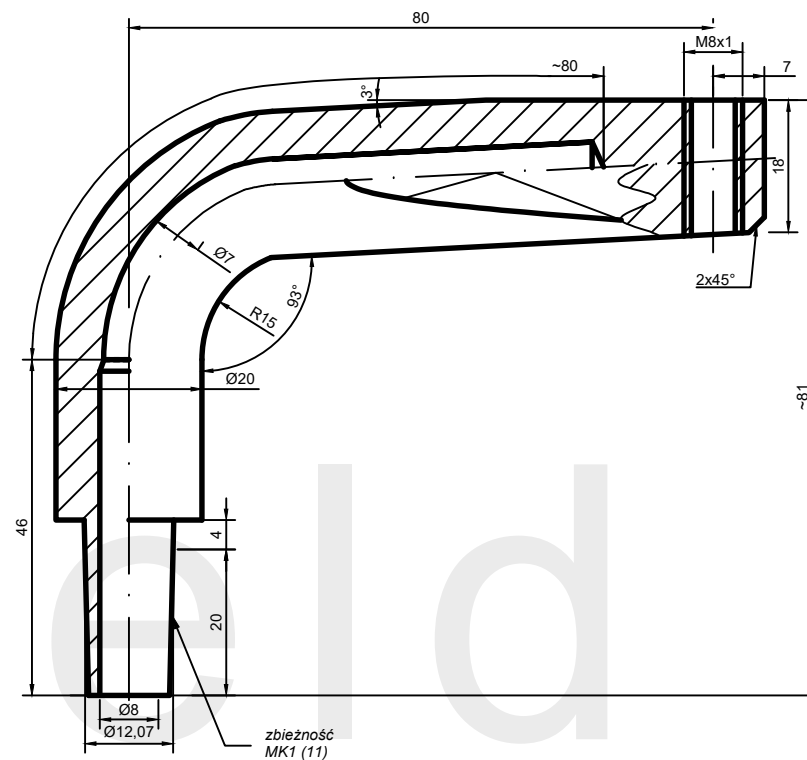
11

Karta katalogowa

07-05-01-11



AW: GN8M1-20.82.100-11



AW: GN8M1-20.81.80-11 *wykonanie na zamówienie

ASweld

OBSADA DLA WKRETEK ELEKTRODOWYCH
ODSADZONA

Mocowanie

11

Karta katalogowa

07-05-02-11

ASweld

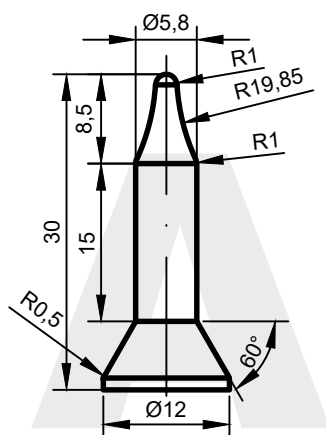
ELEKTRODY DO ZGRZEWANIA ŚRUB I NAKRĘTEK

STOŻEK NR 11

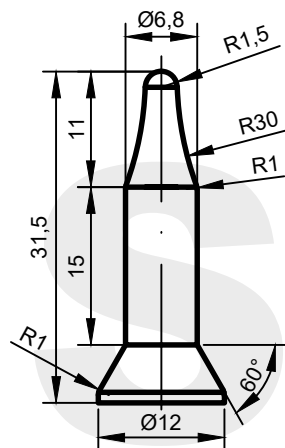
zbieżność MK1 Ø12,065

Karty katalogowe: 08-__-__-11

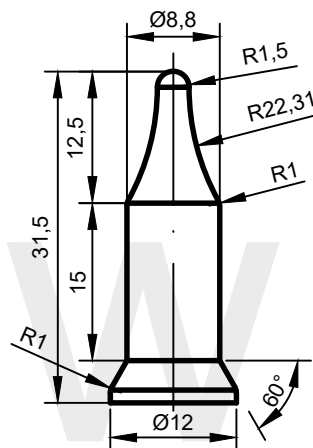




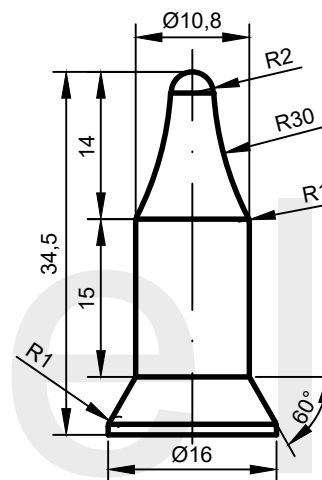
AW: PA-M5-KCF



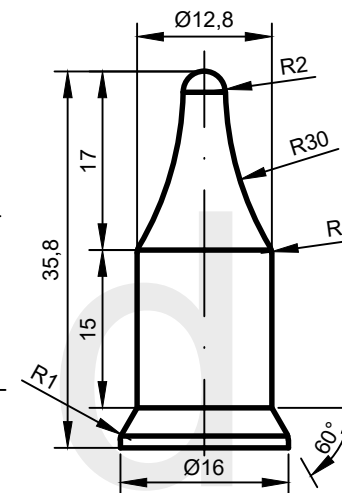
AW: PA-M6-KCF
PA-M6-CER



AW: PA-M8-KCF
PA-M8-CER

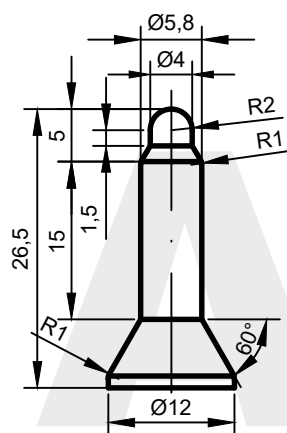


AW: PA-M10-KCF

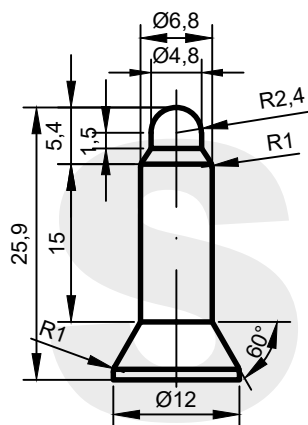


AW: PA-M12-KCF

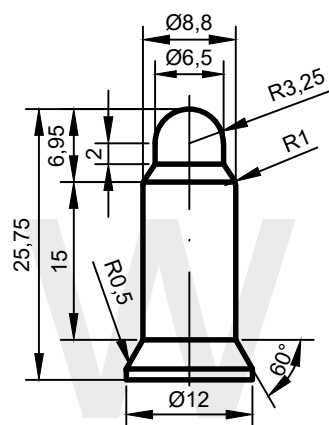
*wykonanie na zamówienie



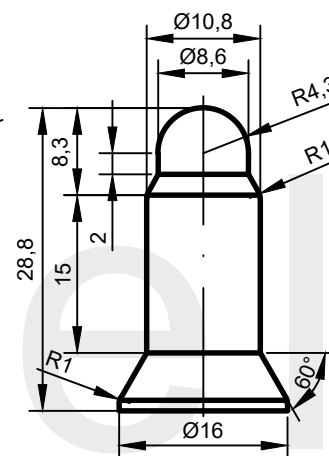
AW: PR-M5-KCF



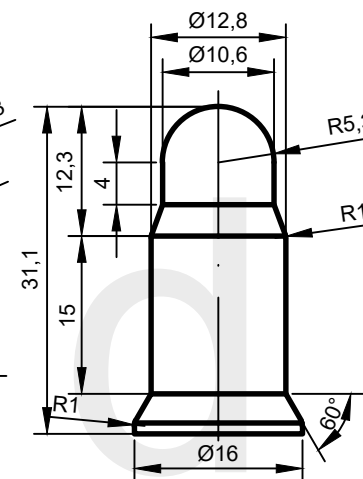
AW: PR-M6-KCF



AW: PR-M8-KCF



AW: PR-M10-KCF



AW: PR-M12-KCF

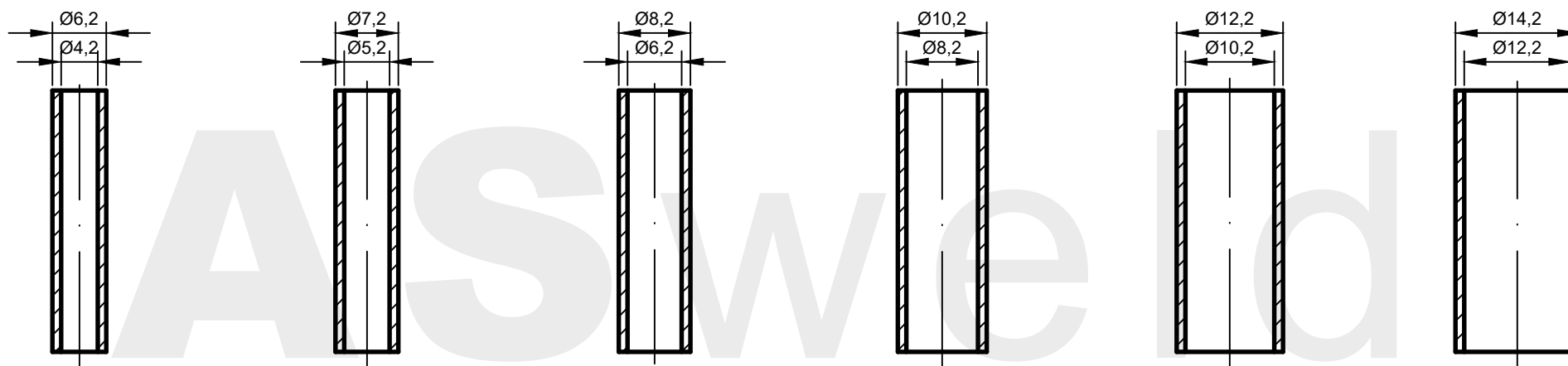
*wykonanie na zamówienie

ASweld

**PINY DO ZGRZEWANIA
DO RĘCZNEGO PODAWANIA NAKRĘTEK**

Karta katalogowa

08-00-02-00



AW: T-M4-KCF

AW: T-M5-KCF

AW: T-M6-KCF

AW: T-M8-KCF

AW: T-M10-KCF

AW: T-M12-KCF

*wykonanie na zamówienie

ASweld

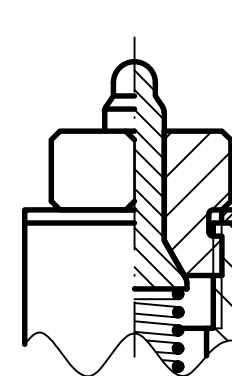
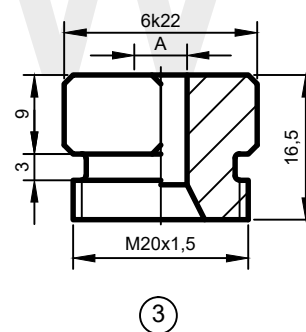
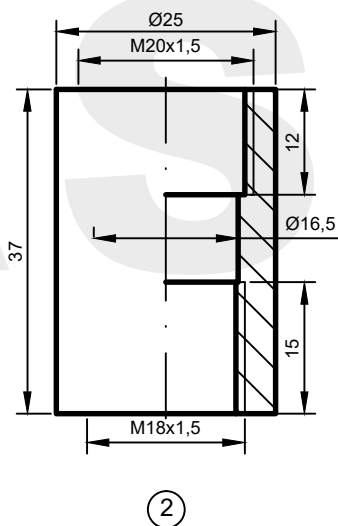
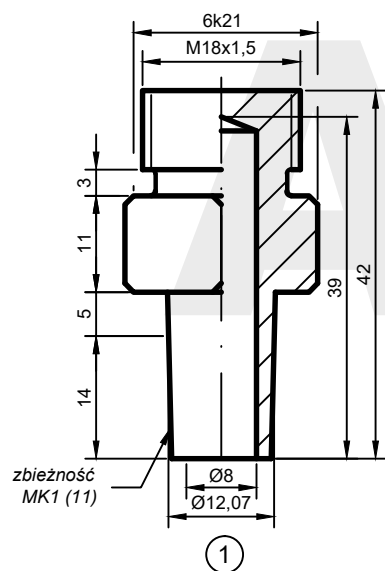
TULEJA Z KCF
DO ZGRZEWANIA ŚRUB

Karta katalogowa

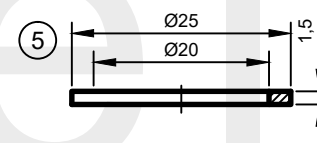
08-00-03-00

Pin do zgrzewania		A [mm]
ręcznego	automatycznego	
PR-M5-KCF	PA-M5-KCF	5.8
PR-M6-KCF	PA-M6-KCF	6.8
PR-M8-KCF	PA-M8-KCF	8.8

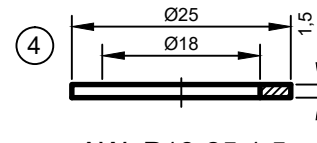
PA-M6-CER	6.8
PA-M8-CER	8.8



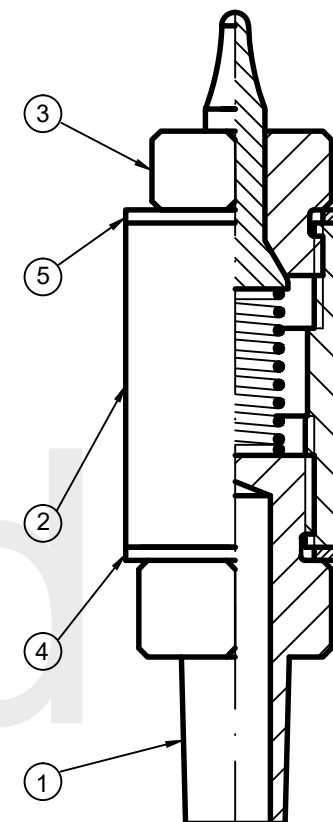
Elektroda z pinem do ręcznego podawania nakrętek



AW: P20-25.1,5



AW: P18-25.1,5



Elektroda z pinem do automatycznego podawania nakrętek

AW: TR-6k22.42-11/18M1,5

AW: KR20M1,5-25.37-18M1,5

AW: WA-6k22.17-20M1,5

ASweld

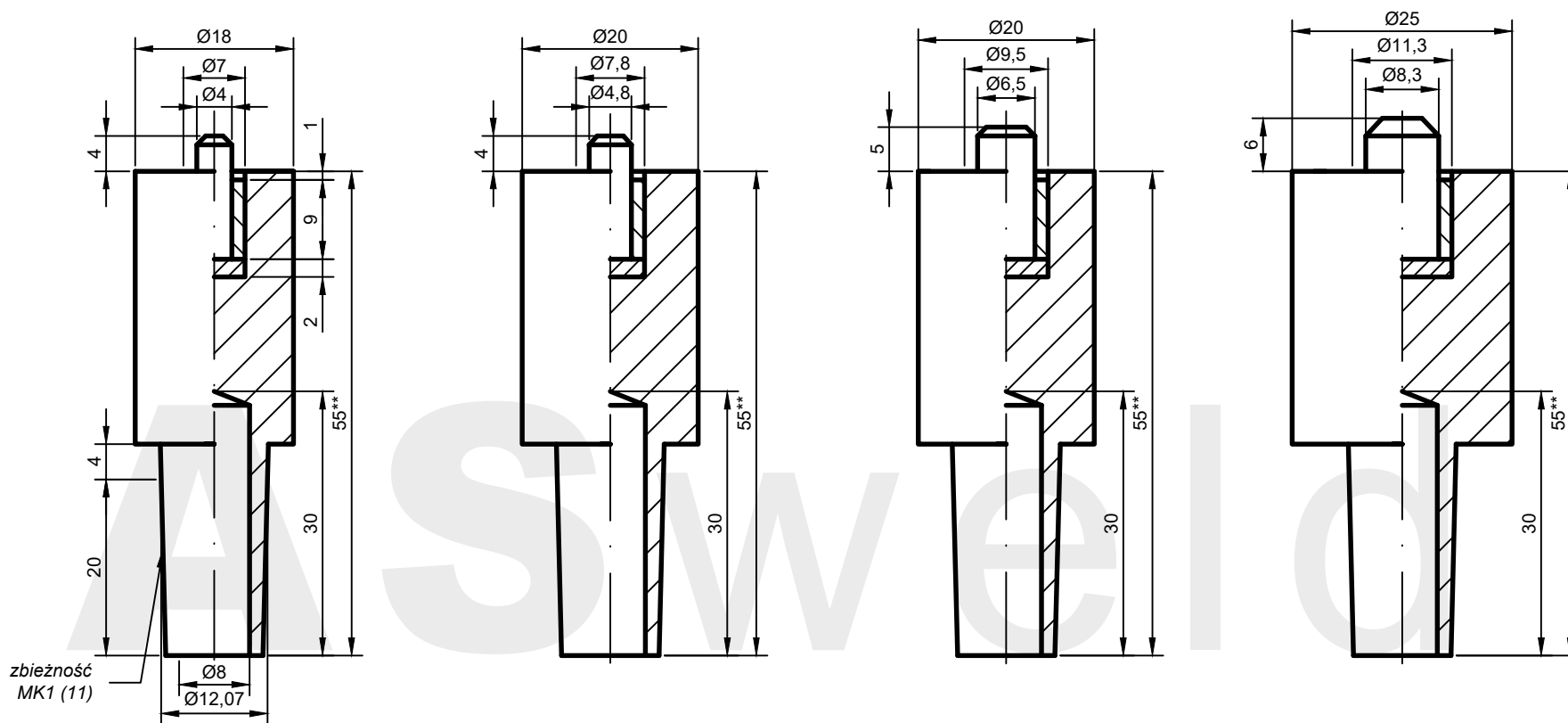
ELEKTRODA Z PINEM
DO ZGRZEWANIA NAKRĘTEK

Chwył elektrody

11

Karta katalogowa

08-01-01-11



AW: M5N-18.55-11*

AW: M6N-20.55-11*

AW: M8N-20.55-11*

AW: M10N-25.55-11*

*wykonanie na zamówienie

**możliwe inne długości wg uzgodnień

ASweld

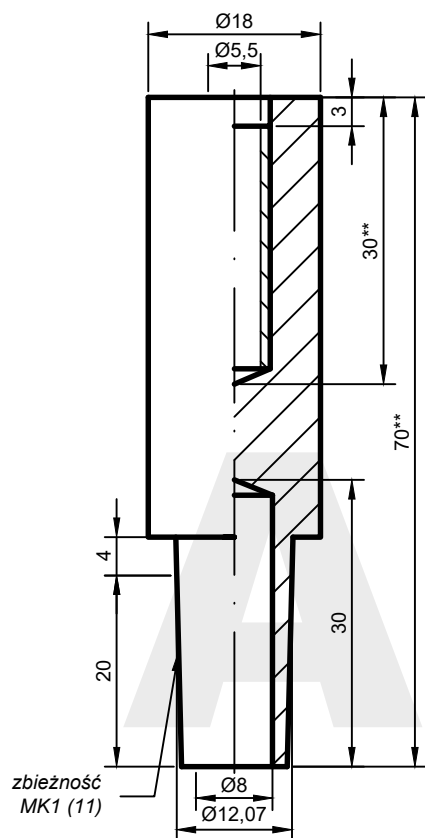
ELEKTRODA PROSTA
 DO ZGRZEWANIA NAKRĘTEK TYPU DIN 929

Chwył elektrody

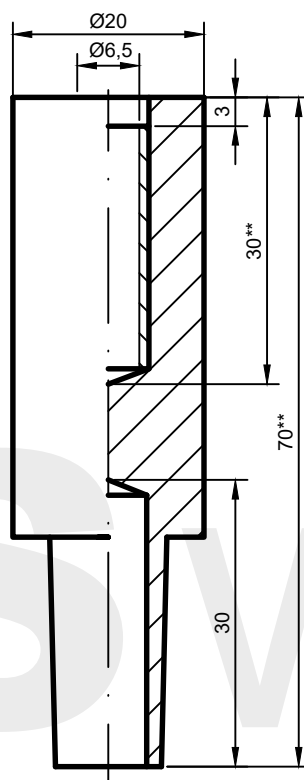
11

Karta katalogowa

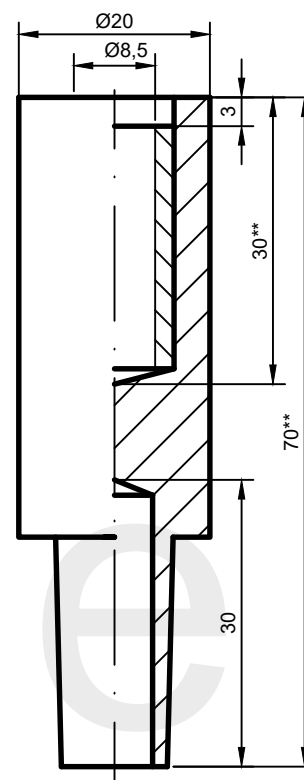
08-01-02-11



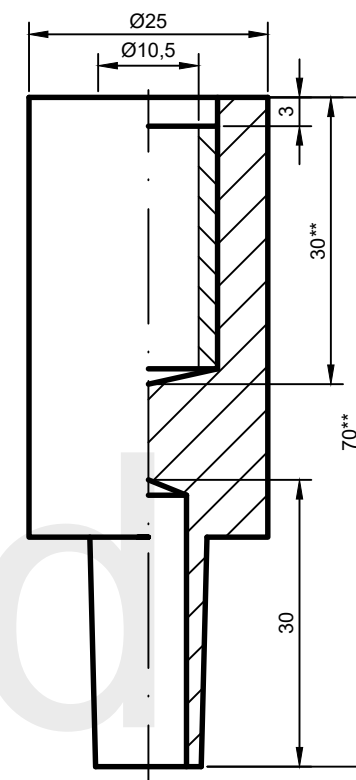
AW: M5S-18.70-11*



AW: M6S-20.70-11*



AW: M8S-20.70-11*



AW: M10S-25.70-11*

*wykonanie na zamówienie
 **możliwe inne długości wg uzgodnień

ASweld

ELEKTRODA PROSTA
 DO ZGRZEWANIA ŚRUB TYPU DIN 34817

Chwył elektrody

11

Karta katalogowa

08-02-02-11

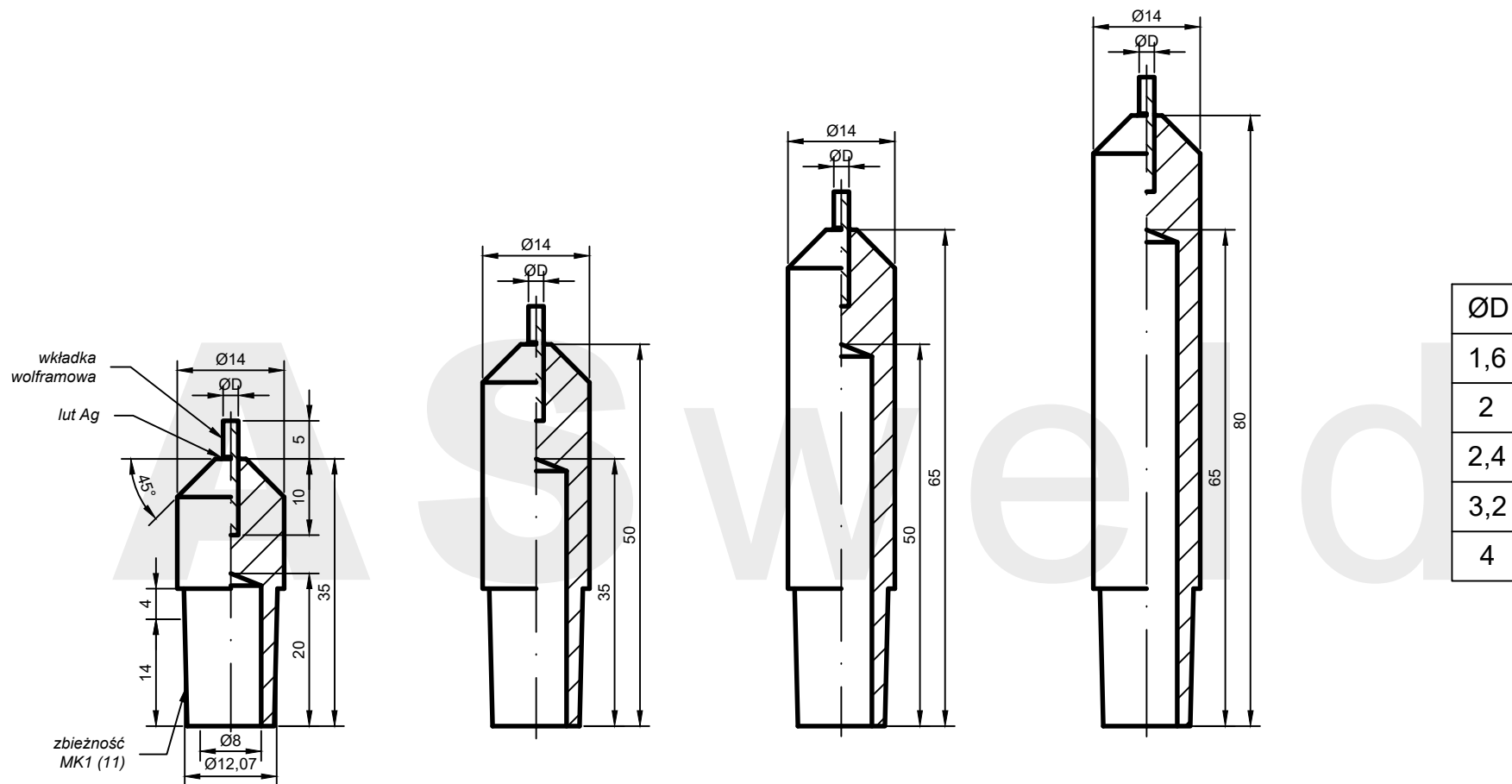
ELEKTRODY WOLFRAMOWE

STOŻEK NR 11

zbieżność MK1 Ø12,065

Karty katalogowe: 09-__-__-11





AW: WØD-14.35-11*

AW: WØD-14.50-11*

AW: WØD-14.65-11*

AW: WØD-14.80-11*

ØD
1,6
2
2,4
3,2
4

*wykonanie na zamówienie

ASweld

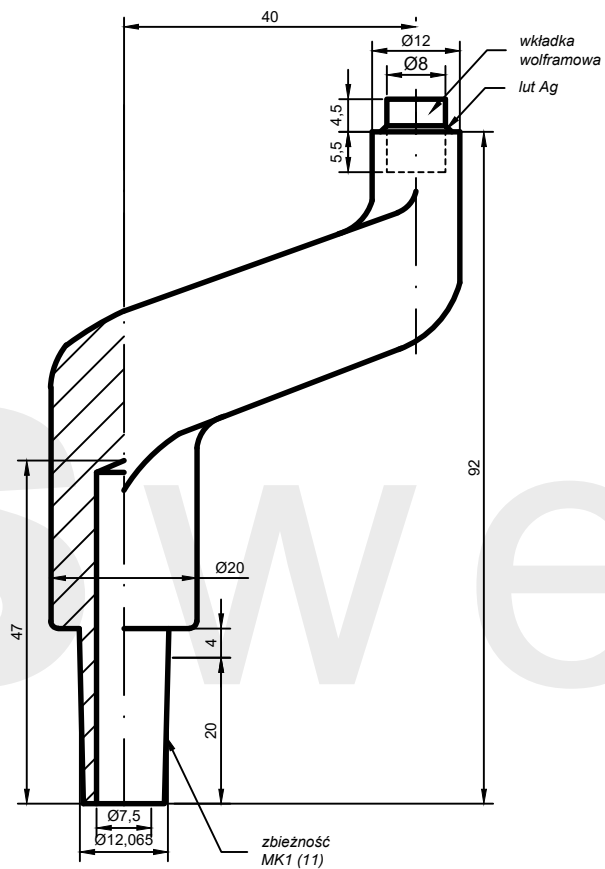
ELEKTRODA PROSTA
Z WKŁADKĄ WOLFRAMOWĄ DO ZGRZEWANIA MIEDZI

Chwyt elektrody

11

Karta katalogowa

09-01-01-11



AW: W8-F03-11*

*wykonanie na zamówienie

ASweld

ELEKTRODA ODSADZONA
Z WKŁADKĄ WOLFRAMOWĄ DO ZGRZEWANIA MIEDZI

Chwyć elektrody

11

Karta katalogowa

09-02-01-11

ASweld

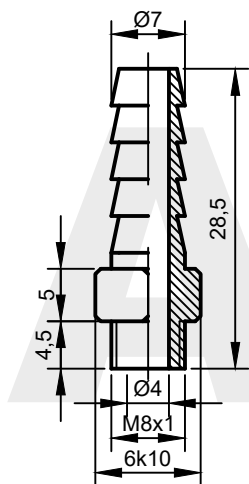
ŚWIECE ELEKTRODOWE

STOŻEK NR 11

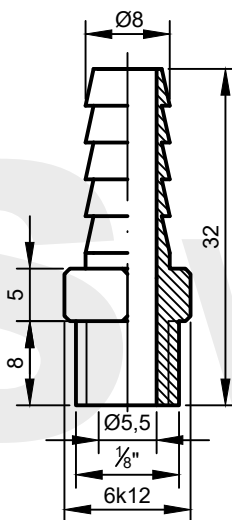
zbieżność MK1 Ø12,065

Karty katalogowe: 10-__-__-11

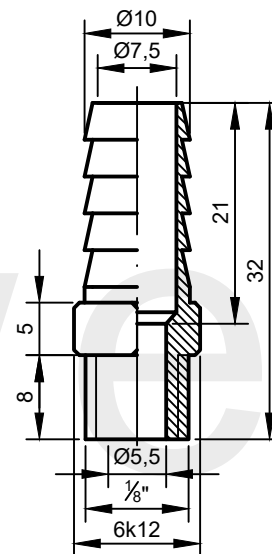




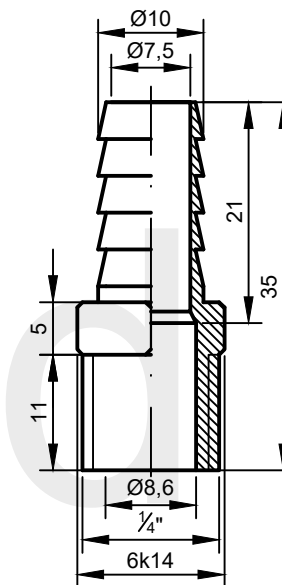
AW: K7-8M1



AW: K8-1G8

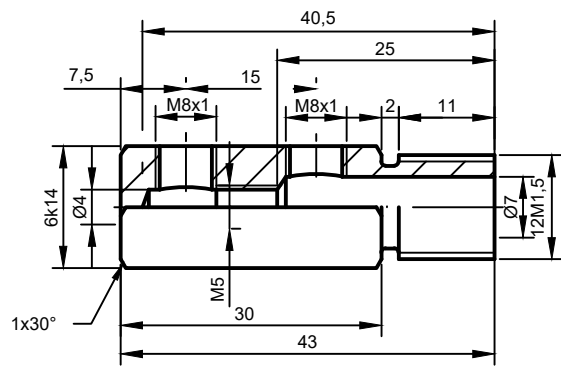


AW: K10-1G8

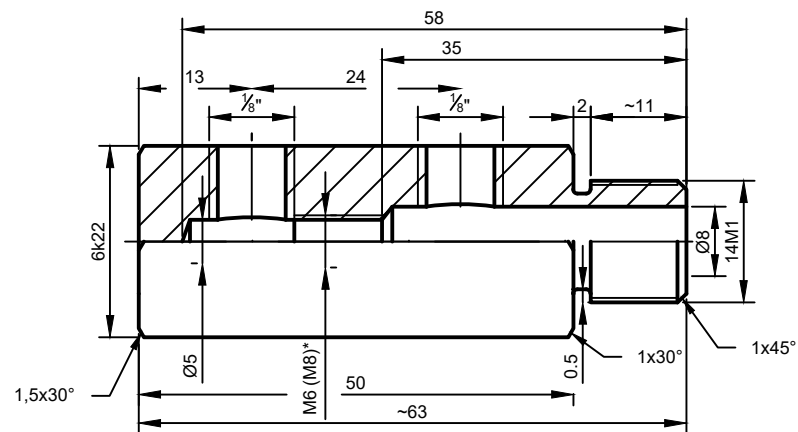


AW: K10-1G4

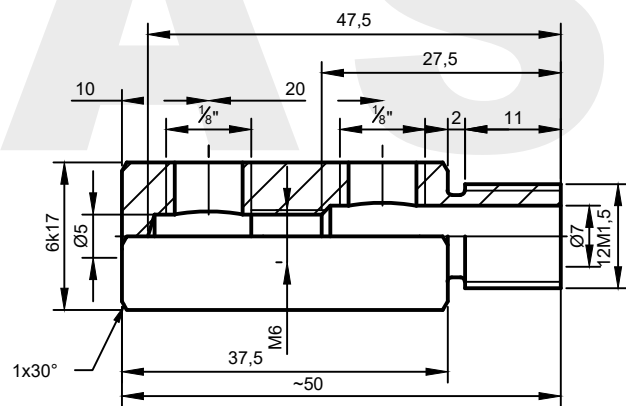
*wykonanie na zamówienie



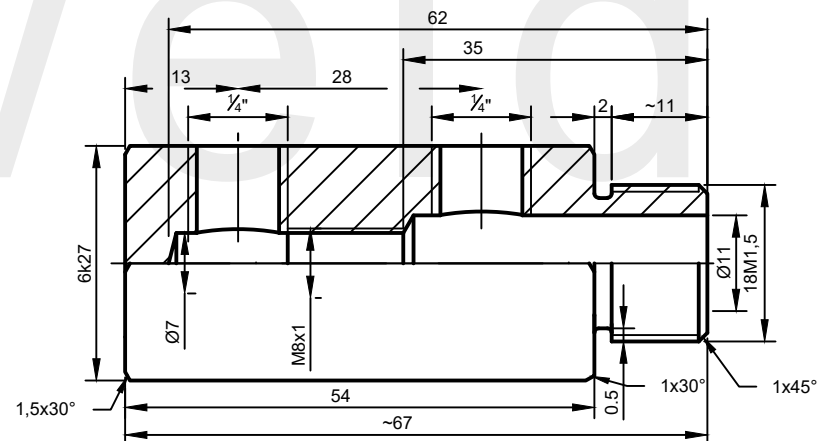
AW: R12M1,5-6k14.43-8M1*



AW: R14M1-6k22.63-1G8

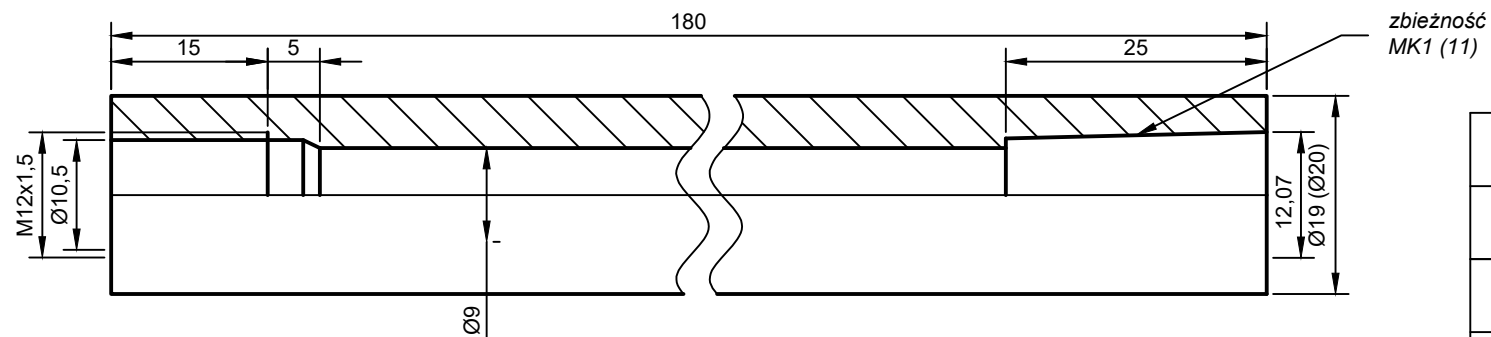


AW: R12M1,5-6k17.50-1G8*



AW: R18M1,5-6k27.67-1G4*

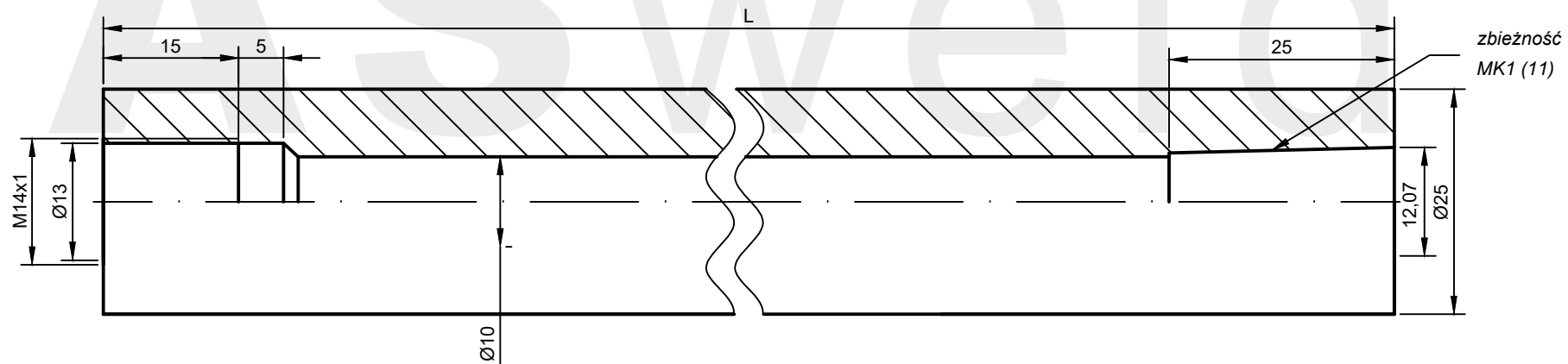
*wykonanie na zamówienie



zbieżność
MK1 (11)

	L[mm]
SC11-19.180	180
SC11-20.180	180
SC11-25.240	240
SC11-25.400	400

AW: SC11-19.180



zbieżność
MK1 (11)

AW: SC11-25.L

*wykonanie na zamówienie

ASweld

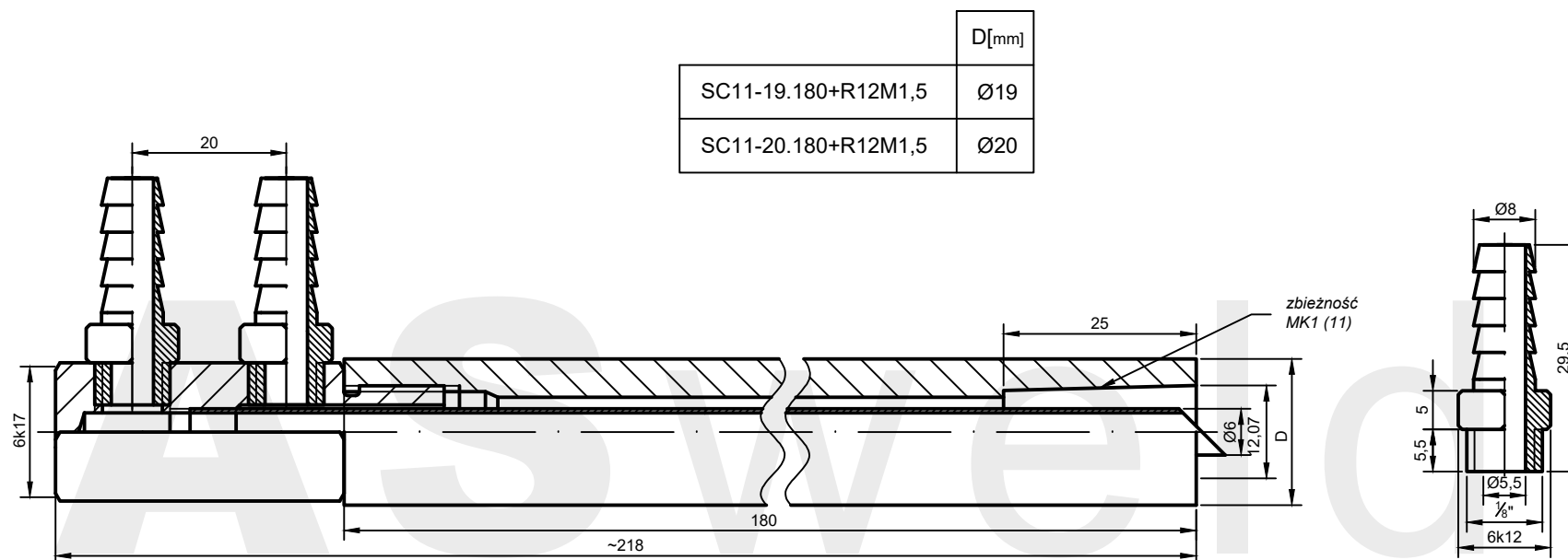
ŚWIECA

Mocowanie

11

Karta katalogowa

10-01-01-11



AW: SC11-D.180+R12M1,5

*wykonanie na zamówienie

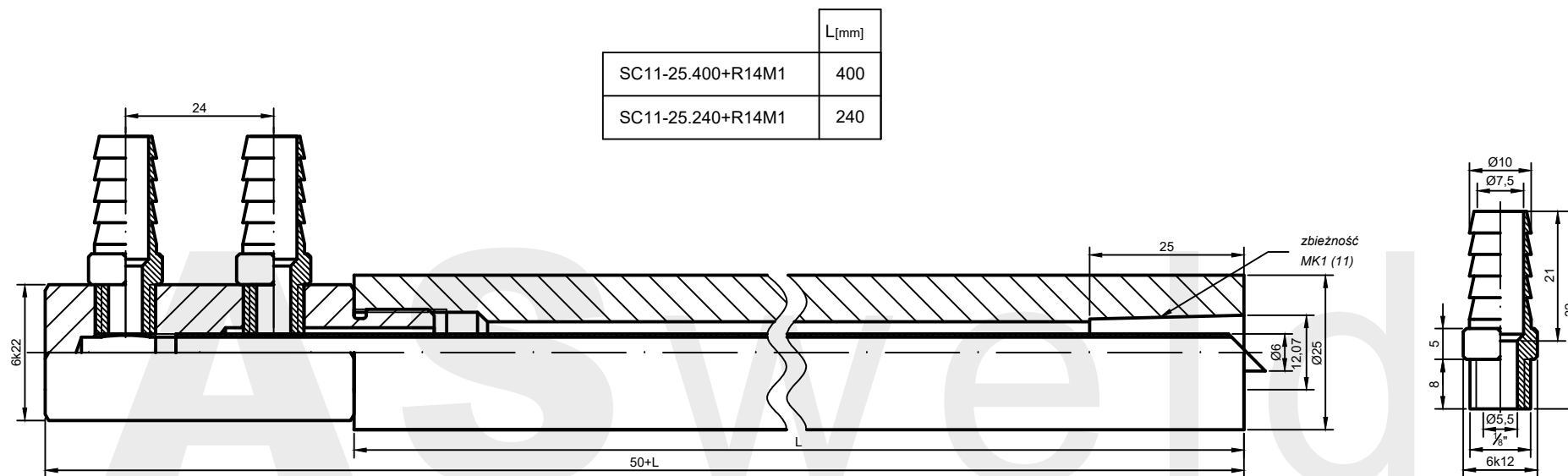
ASweld**ŚWIECA Z ROZDZIELACZEM**

Mocowanie

11

Karta katalogowa

10-02-01-11



AW: SC11-25.L+R14M1

*wykonanie na zamówienie

ASweld

ŚWIECA Z ROZDZIELACZEM

Mocowanie

11

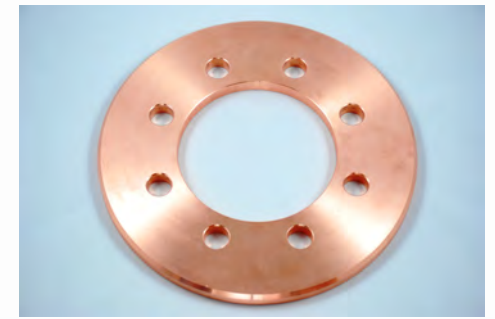
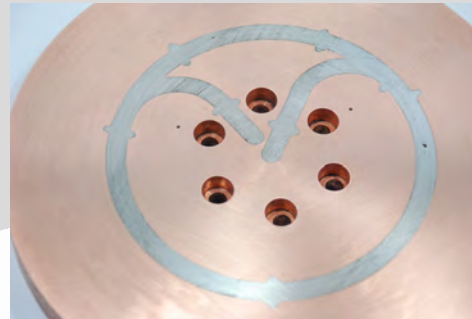
Karta katalogowa

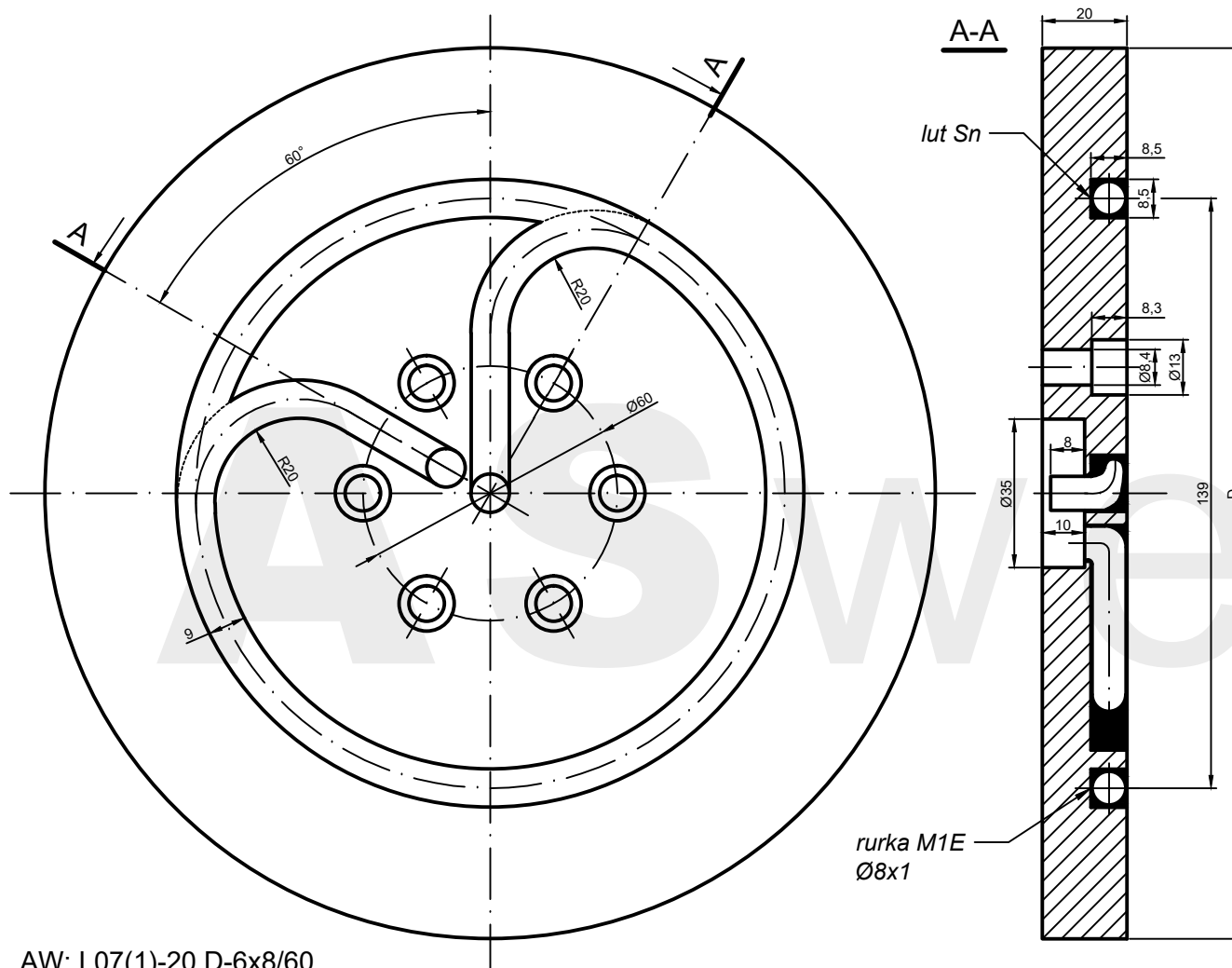
10-02-02-11

ASweld

ELEKTRODY KRAŹKOWE

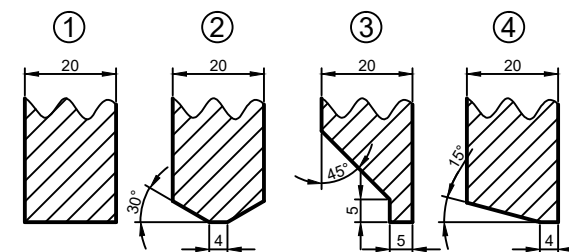
Karty katalogowe: 11-__-__-__





Elektroda	Typ ostrzenia	D
L07(1)-20.210-6x8/60*	1	210
L07(1)-20.240-6x8/60*	1	240
L07(2)-20.210-6x8/60*	2	210
L07(2)-20.240-6x8/60*	2	240
L07(3)-20.210-6x8/60*	3	210
L07(3)-20.240-6x8/60*	3	240
L07(4)-20.220-6x8/60*	4	220
L07(4)-20.240-6x8/60*	4	240

Typy ostrzenia



*wykonanie na zamówienie

AW: L07(1)-20.D-6x8/60

ASweld

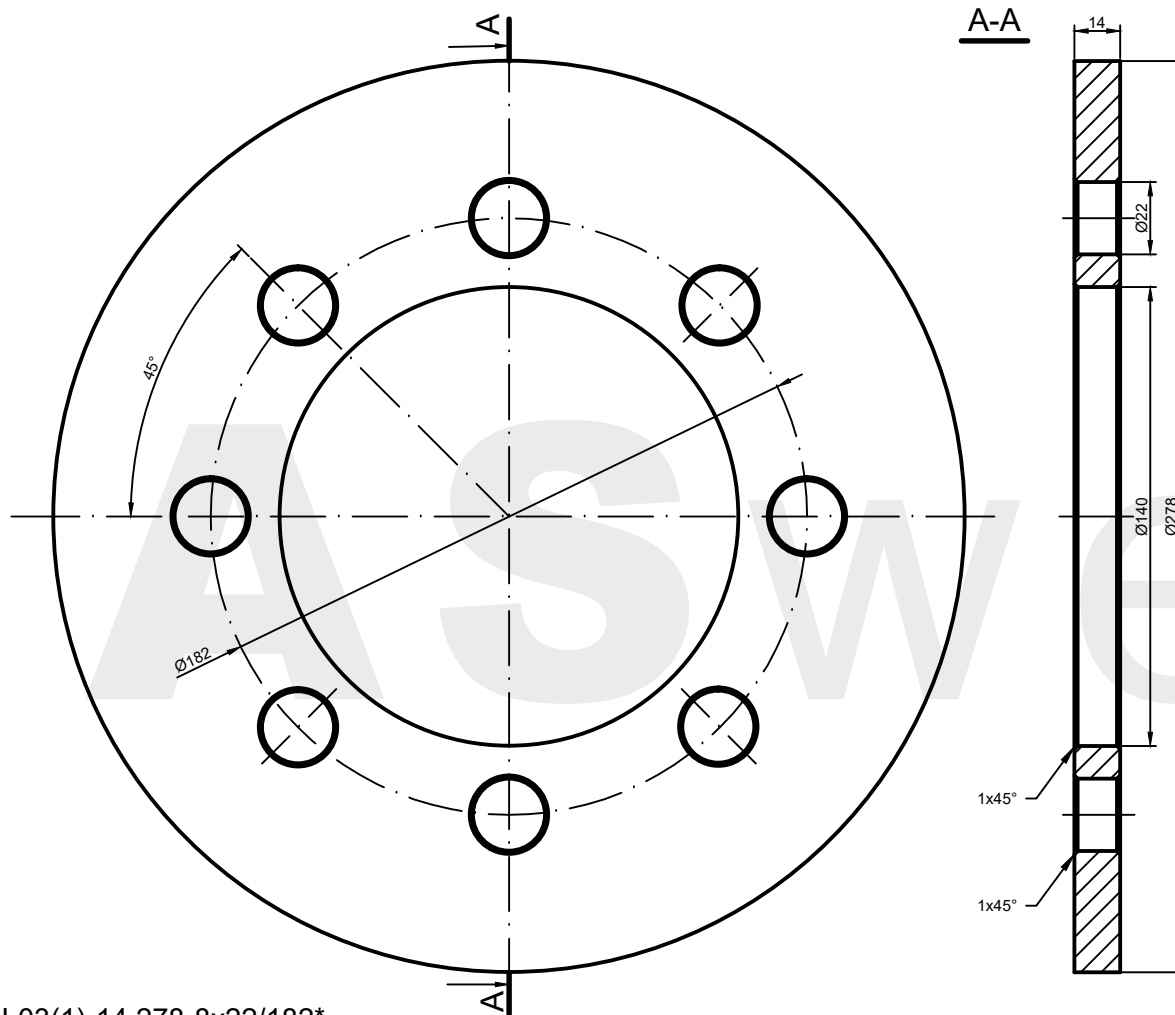
**ELEKTRODA KRAŻKOWA
Z CHŁODZENIEM BEZPOŚREDNIM**

Mocowanie

6x8/60

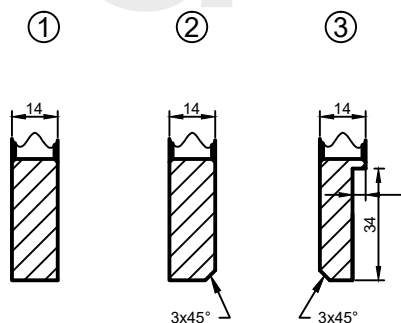
Karta katalogowa

11-01-01-6x8/60



Elektroda	Typ ostrzenia
L03(1)-14.278-8x22/182*	1
L03(2)-14.278-8x22/182*	2
L03(3)-14.278-8x22/182*	3

Typy ostrzenia



*wykonanie na zamówienie

AW: L03(1)-14.278-8x22/182*

ASweld

ELEKTRODA KRAŹKOWA

Mocowanie

8x22/182

Karta katalogowa

11-01-02-8x22/182

Biuro:

NIP: 898-117-63-97
ul. Grunwaldzka 22
50-355 Wrocław
Tel: 600 469 939
e-mail: krzysztof.wojtal@asweld.pl

Produkcja elektrod:

Ul. Jana Długosza 2-6, Budynek 7
51-162 Wrocław
Tel: 530 718 577
e-mail: elektrody@asweld.pl

