

KATALOG ELEKTROD DO ZGRZEWANIA REZYSTANCYJNEGO

STOŻEK NR 31

zbieżność BS $\varnothing 10,8$



KARTY KATALOGOWE

PRODUKTY

01.....	ELEKTRODY PROSTE
02.....	ELEKTRODY ODSADZONE KUTE
03.....	ELEKTRODY ODSADZONE GIĘTE
04.....	ELEKTRODY ODSADZONE PODWÓJNIE GIĘTE
05.....	ELEKTRODY PŁASKIE
06.....	OBSADY ELEKTROD NASADKOWYCH
07.....	OBSADY ELEKTROD GRZYBKOWYCH I WKRETEK ELEKTRODOWYCH
08.....	ELEKTRODY DO ZGRZEWANIA ŚRUB I NAKRETEK
09.....	ELEKTRODY WOLFRAMOWE
10.....	ŚWIECE ELEKTRODOWE
11.....	ELEKTRODY KRAŻKOWE
12.....	MATERIAŁY, OSPRZĘT, URZĄDZENIA DO ZGRZEWAREK

ASweld

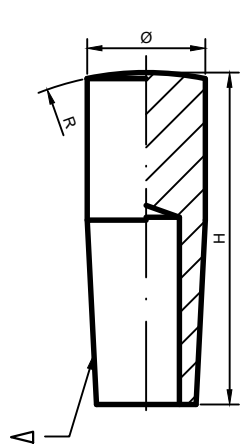
ELEKTRODY PROSTE

STOŻEK NR 31

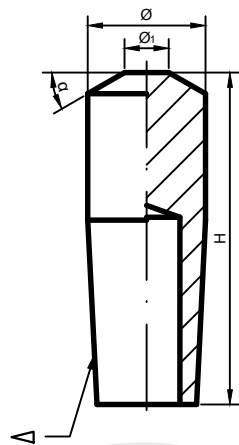
zbieżność BS $\varnothing 10,8$

Karty katalogowe: 01-__-__-31

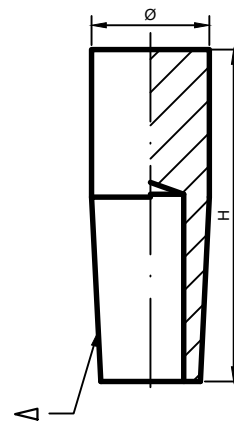




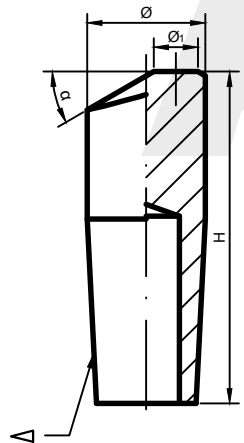
AW: A(R)-Ø.H-Δ



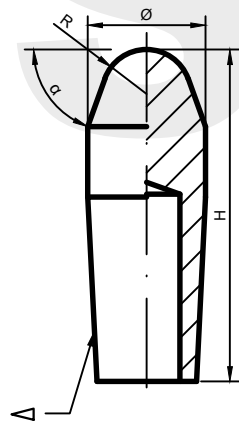
AW: Bk(Ø1)-Ø.H-Δ



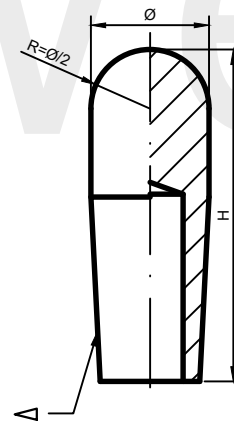
AW: C-Ø.H-Δ



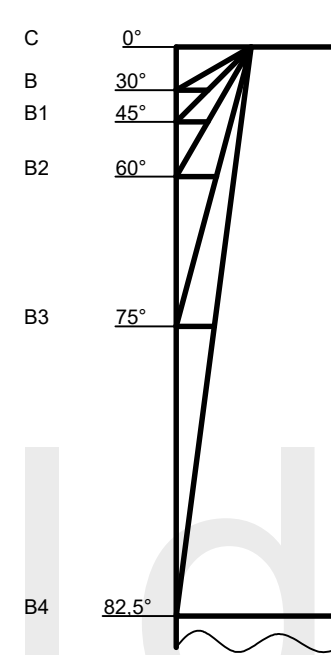
AW: Dk(Ø1)-Ø.H-Δ



AW: Ek(R)-Ø.H-Δ

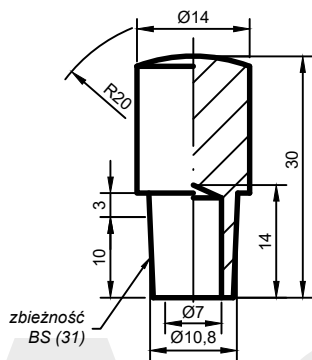


AW: F-Ø.H-Δ

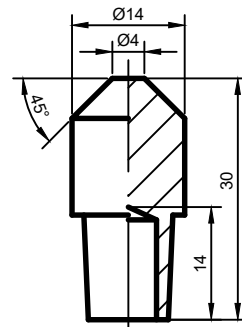


k	α
-	30°
1	45°
2	60°
3	75°
4	82,5°

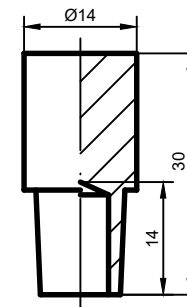




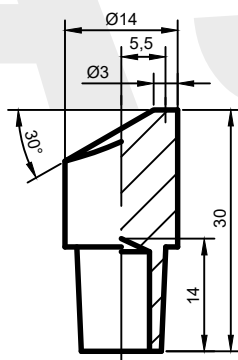
AW: A(20)-14.30-31*



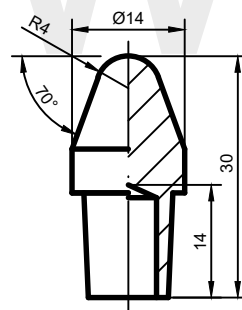
AW: B(4)-14.30-31*



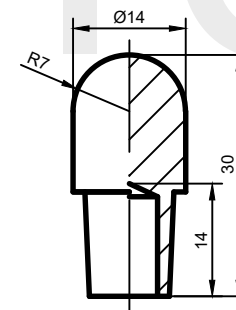
AW: C-14.30-31*



AW: D(3)-14.30-31*



AW: E(4)-14.30-31*



AW: F-14.30-31*

*wykonanie na zamówienie

ASweld

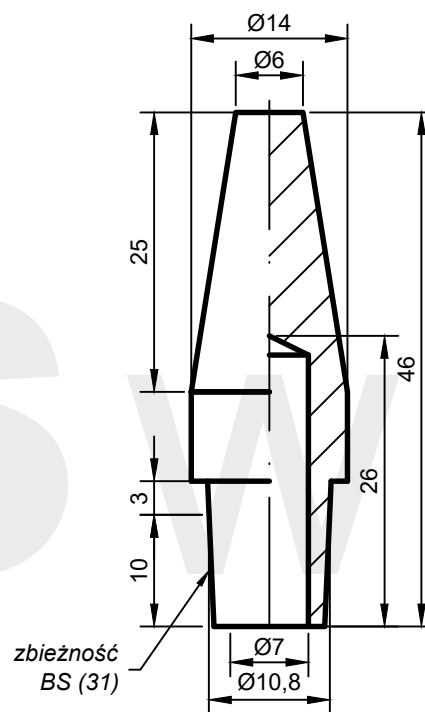
ELEKTRODA PROSTA

Chwyt elektrody

31

Karta katalogowa

01-01-00-31



AW: B4(6)-14.46-31*

*wykonanie na zamówienie

ASweld

ELEKTRODA PROSTA
forma B4

Chwył elektrody

31

Karta katalogowa

01-02-01-31

ASweld

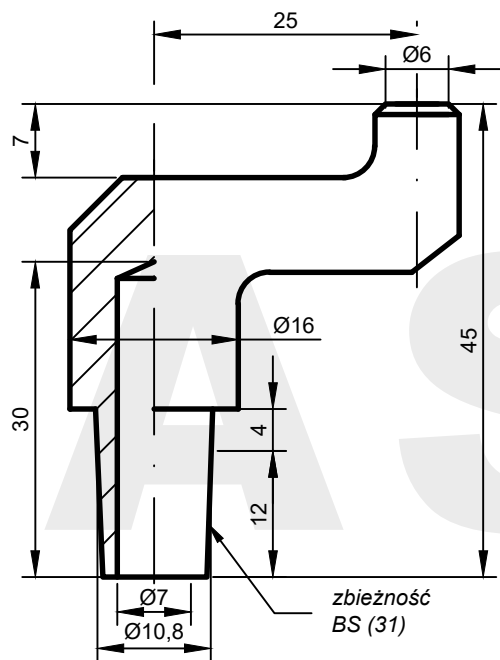
ELEKTRODY ODSADZONE KUTE

STOŻEK NR 31

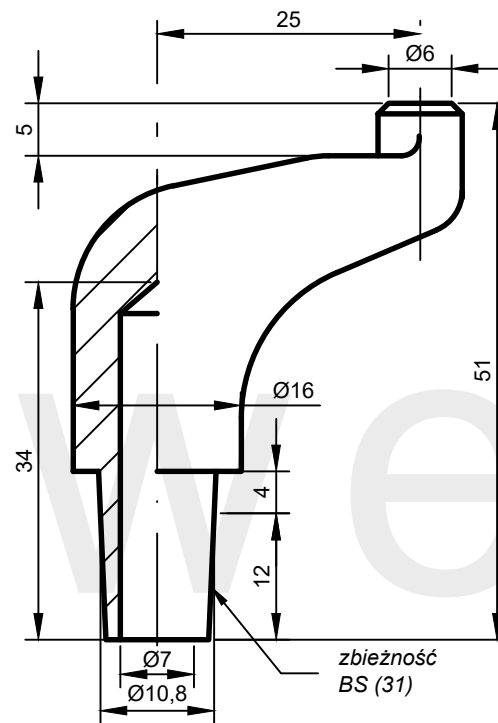
zbieżność BS $\varnothing 10,8$

Karty katalogowe: 02-__-__-31

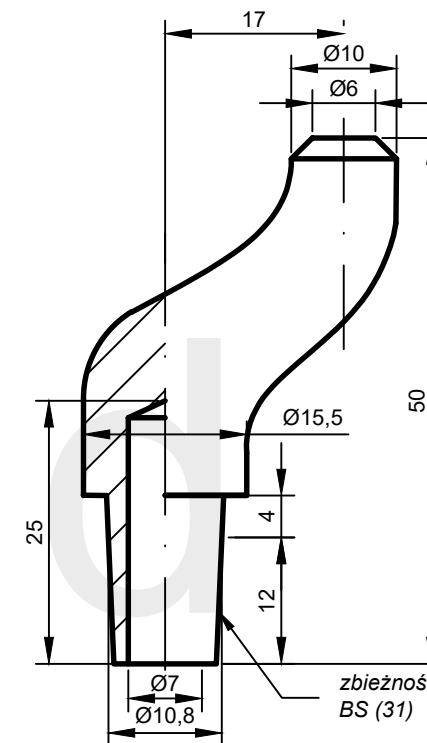




AW: F01(6)-16.43.25-31



AW: F02(6)-16.49.25-31



AW: F06(6)-15,5.48.17-31

*wykonanie na zamówienie

ASweld

ELEKTRODA ODSADZONA
KUTA

Chwył elektrody

31

Karta katalogowa

02-01-01-31

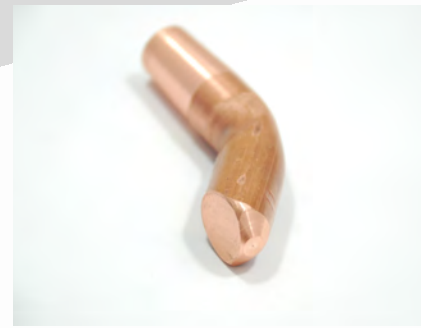
ASweld

ELEKTRODY ODSADZONE GIĘTE

STOŻEK NR 31

zbieżność BS $\varnothing 10,8$

Karty katalogowe: 03-__-__-31



ASweld

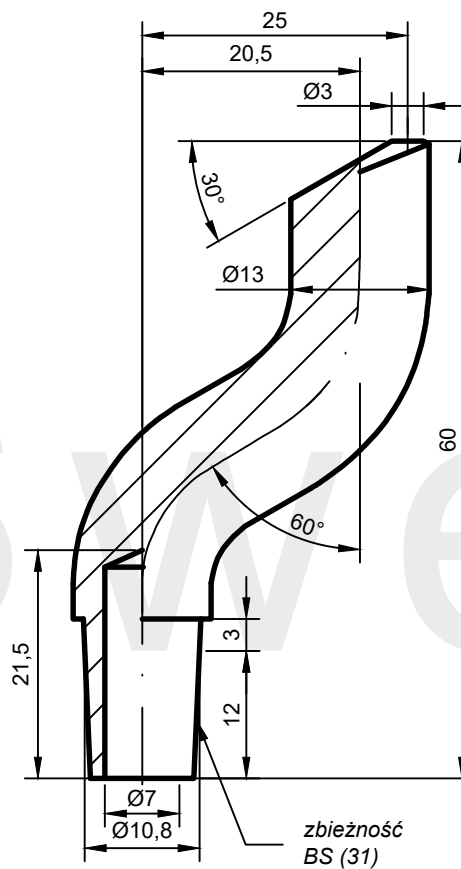
ELEKTRODY ODSADZONE PODWÓJNIE GIĘTE

STOŻEK NR 31

zbieżność BS $\varnothing 10,8$

Karty katalogowe: 04-__-__-31





AW: G2D(3)-13.60.25-31*

*wykonanie na zamówienie

ASweld

ELEKTRODA ODSADZONA
PODWÓJNIE GIĘTA

Chwył elektrody

31

Karta katalogowa

04-01-01-31

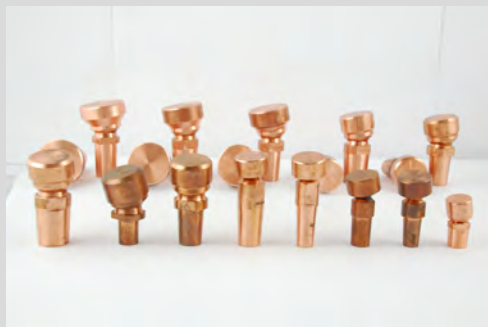
ASweld

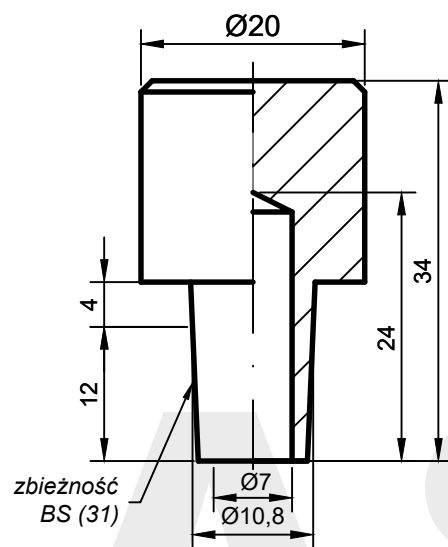
ELEKTRODY PŁASKIE

STOŻEK NR 31

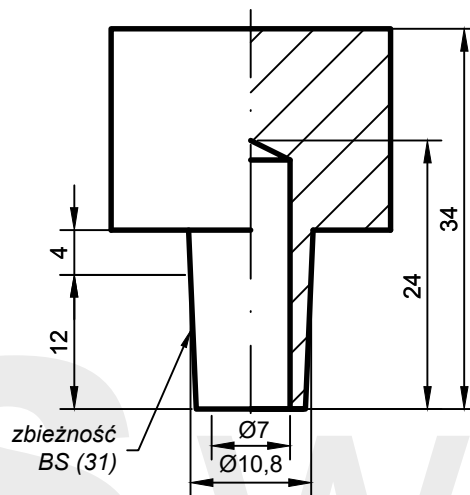
zbieżność BS $\varnothing 10,8$

Karty katalogowe: 05-__-__-31

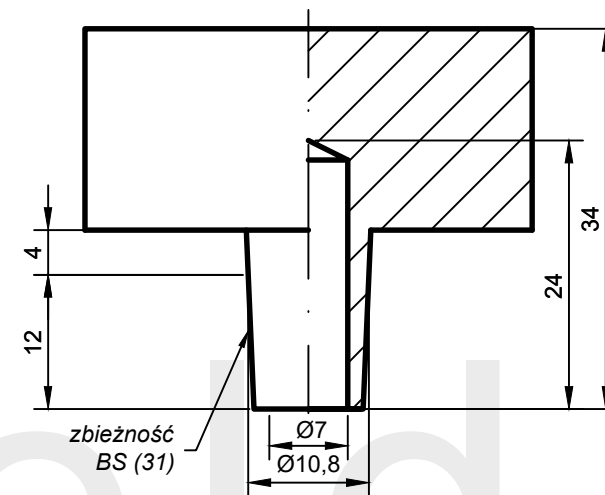
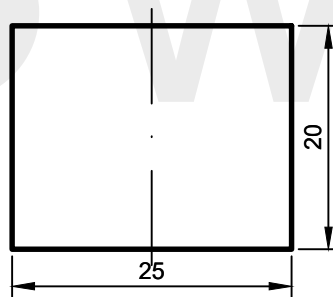




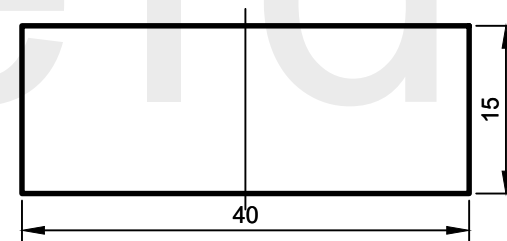
AW: C-20.34-31*



AW: C-25x20.34-31*



AW: C-40x15.34-31*



*wykonanie na zamówienie

ASweld

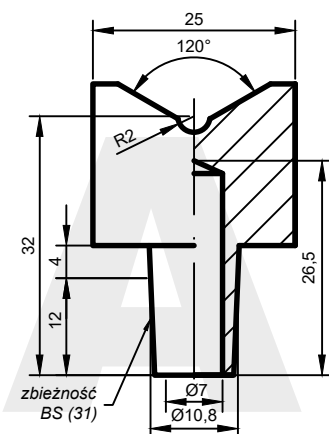
ELEKTRODA PŁASKA
WALCOWA LUB PROSTOKĄTNA

Chwył elektrody

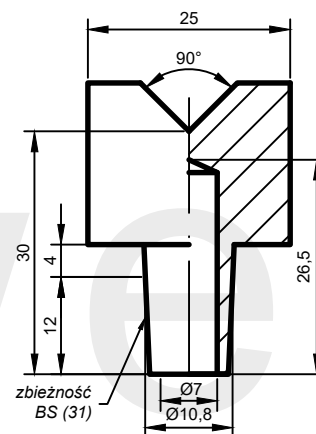
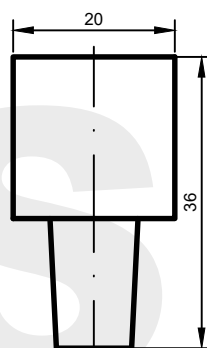
31

Karta katalogowa

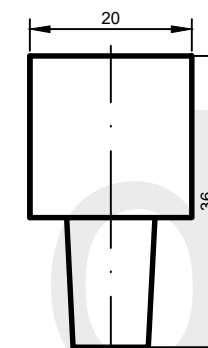
05-01-01-31



AW: V120-20x25.36-31*



AW: V90-20x25.36-31*



*wykonanie na zamówienie

ASweld

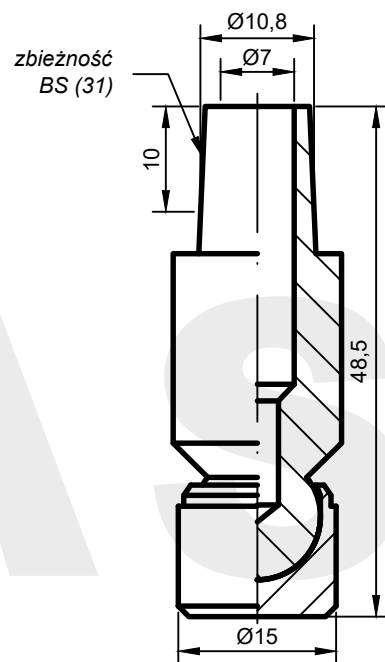
ELEKTRODA PŁASKA
Z PRYZMĄ

Chwył elektrody

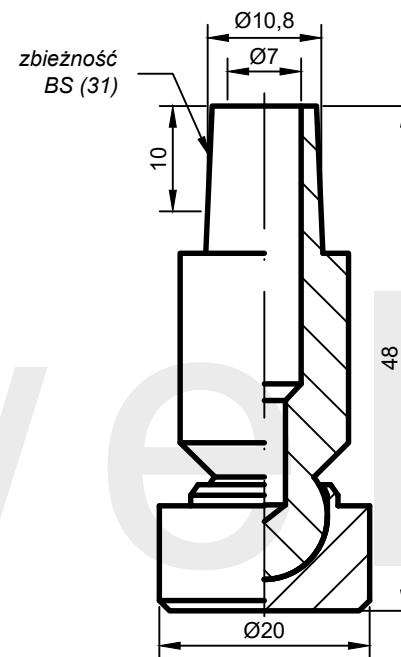
31

Karta katalogowa

05-02-01-31



AW: PK12-15.48-31*



AW: PK12-20.48-31*

*wykonanie na zamówienie

ASweld

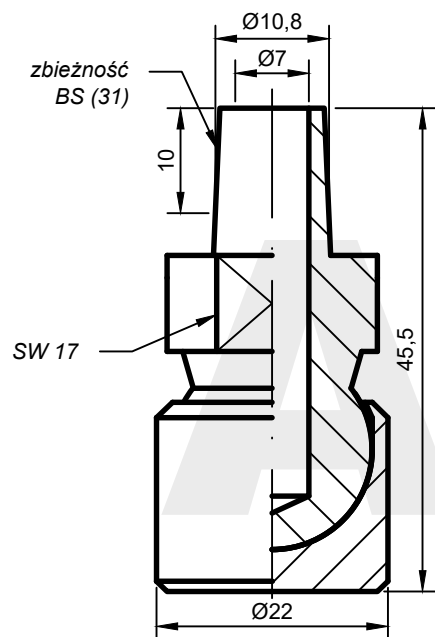
ELEKTRODA WAHLIWA
przegub K12

Chwył elektrody

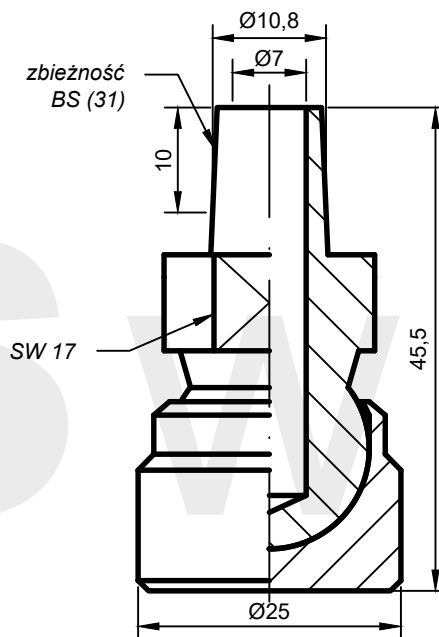
31

Karta katalogowa

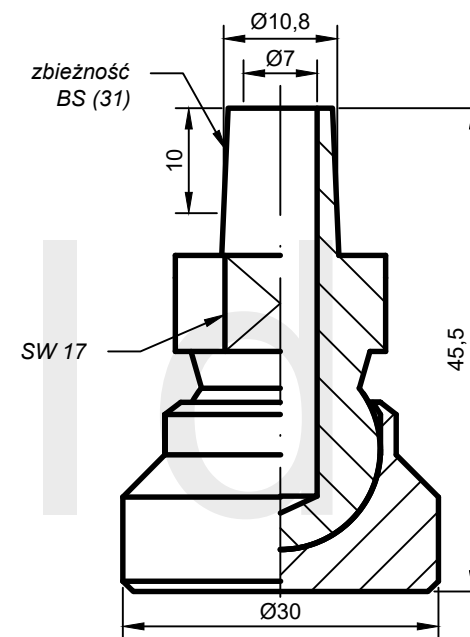
05-04-01-31



AW: PK19-22.46-31



AW: PK19-25.46-31



AW: PK19-30.46-31*

*wykonanie na zamówienie

ASweld

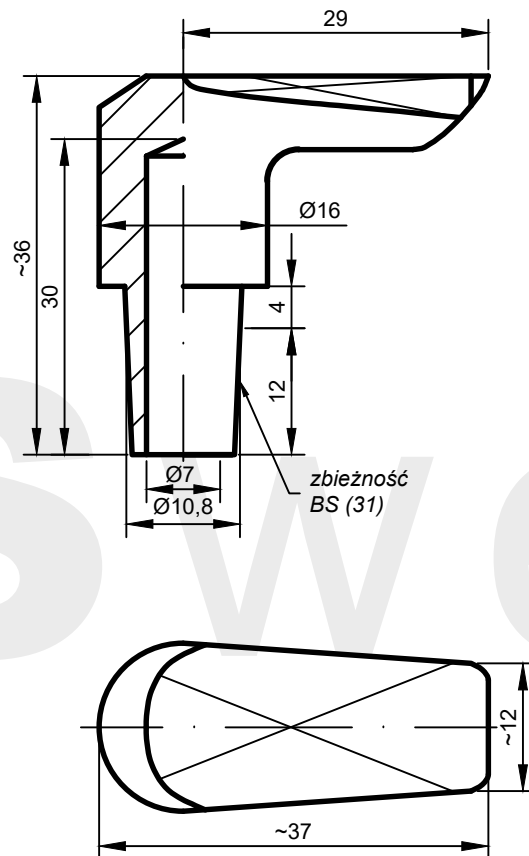
ELEKTRODA WAHLIWA
przegub K19

Chwył elektrody

31

Karta katalogowa

05-04-02-31



AW: KF01-16.36.29-31*

*wykonanie na zamówienie

ASweld

ELEKTRODA PŁASKA
ODSADZONA

Chwyć elektrody

31

Karta katalogowa

05-05-01-31

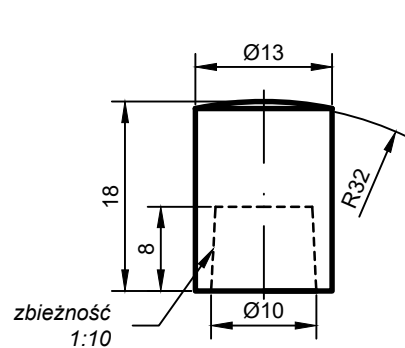
OBSADY ELEKTROD NASADKOWYCH

STOŻEK NR 31

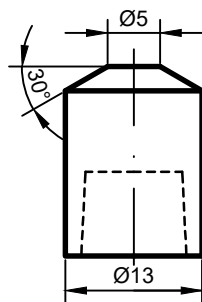
zbieżność BS $\varnothing 10,8$

Karty katalogowe: 06-__-__-31

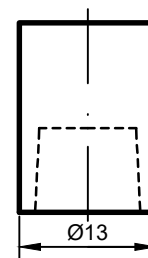




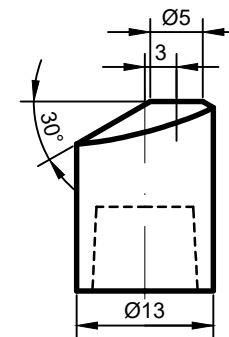
Typ: N-A13



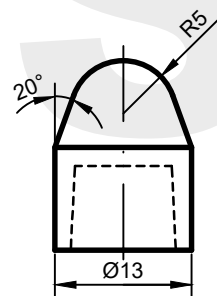
Typ: N-B13



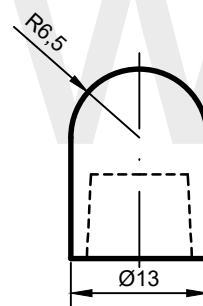
Typ: N-C13



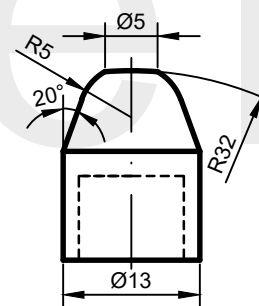
Typ: N-D13



Typ: N-E13



Typ: N-F13



Typ: N-G13

*wykonanie na zamówienie

ASweld

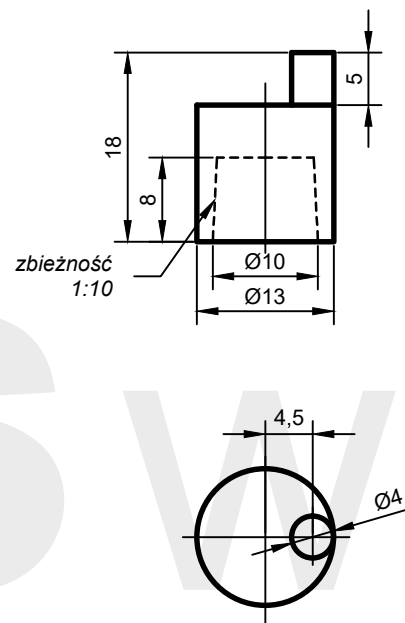
ELEKTRODA NASADKOWA
rozmiar 13

Chwyt elektrody

51

Karta katalogowa

06-00-01-51



AW: N-C13(4.5)

*wykonanie na zamówienie

ASweld

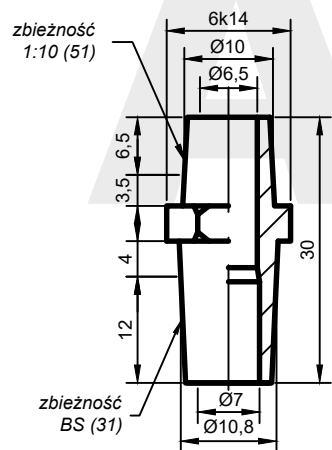
ELEKTRODA NASADKOWA
rozmiar 13

Chwyt elektrody

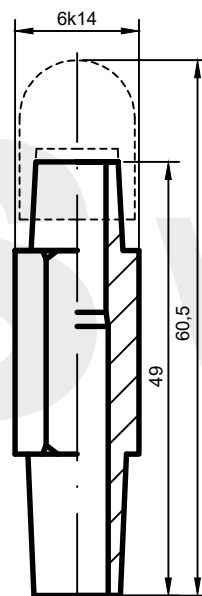
51

Karta katalogowa

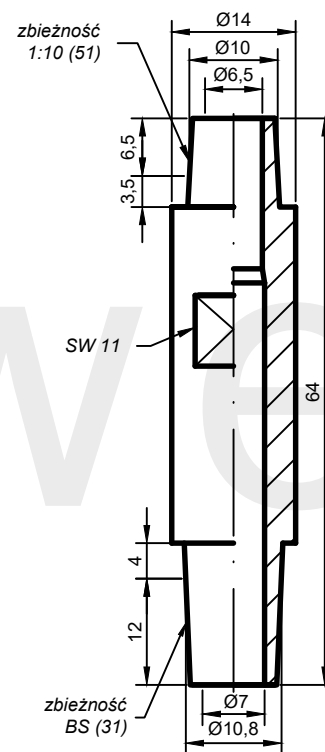
06-00-02-51



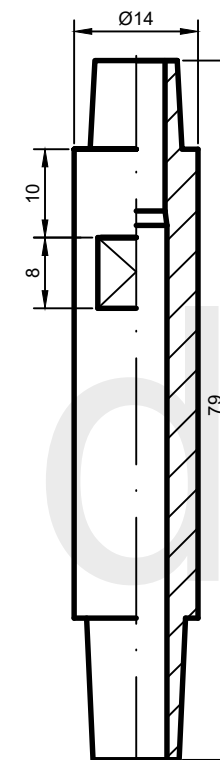
AW: TR51-6k14.30-31



AW: TR51-6k14.49-31



AW: TR51-14.64-31



AW: TR51-14.79-31

*wykonanie na zamówienie

ASweld

**OBSADA ELEKTROD NASADKOWYCH
TRZON PROSTY Z OTWOREM PRZELOTOWYM**

Mocowanie

31/51

Karta katalogowa

06-01-01-31

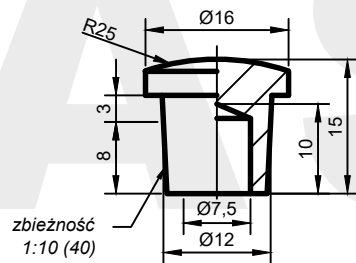
OBSADY ELEKTROD GRZYBKOWYCH I WKRETEK ELEKTRODOWYCH

STOŻEK NR 31

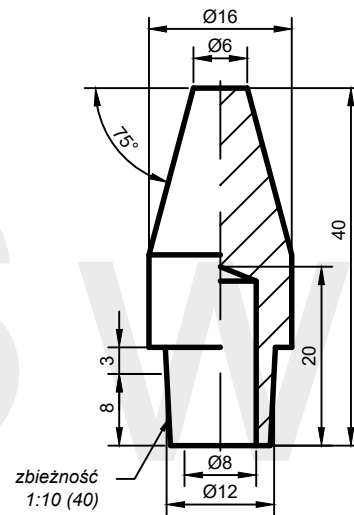
zbieżność BS $\varnothing 10,8$

Karty katalogowe: 07-__-__-31

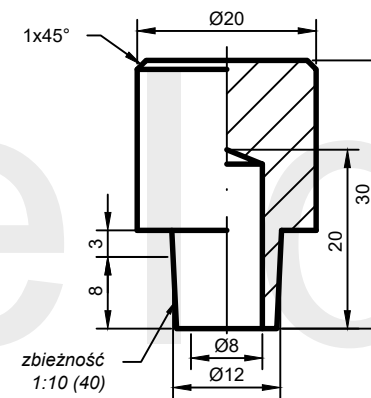




AW: A(25)-16.15-40



AW: B3(6)-16.40-40



AW: C-20.30-40

*wykonanie na zamówienie

ASweld

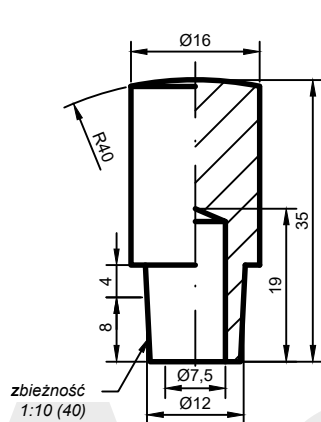
ELEKTRODA GRZYBKOWA

Chwył elektrody

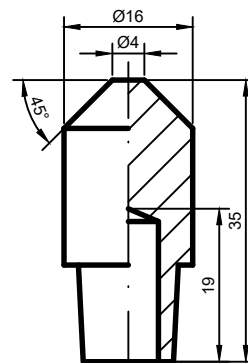
40

Karta katalogowa

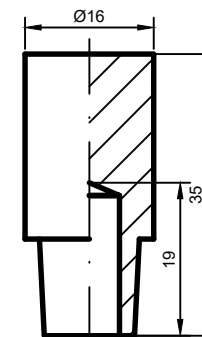
07-00-01-40



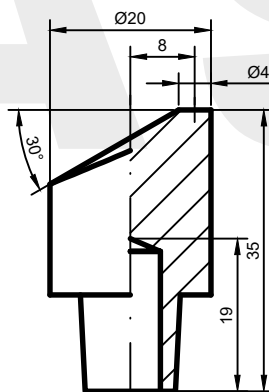
AW: A(40)-16.35-40



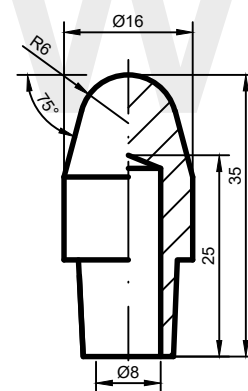
AW: B1(4)-16.35-40



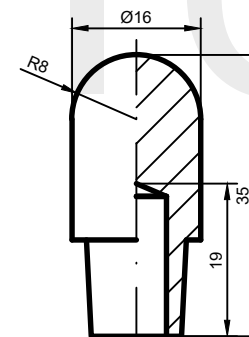
AW: C-16.35-40



AW: D(4)-20.35-40



AW: E3(6)-16.35-40



AW: F-16.35-40

*wykonanie na zamówienie

ASweld

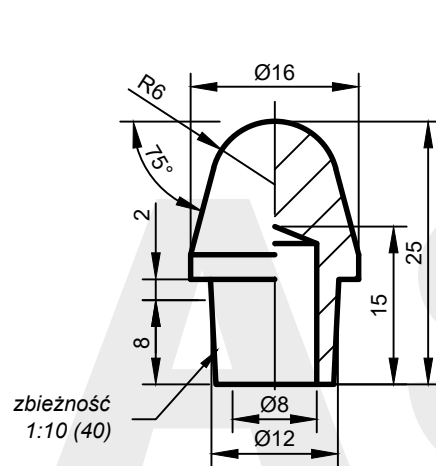
ELEKTRODA GRZYBKOWA

Chwyt elektrody

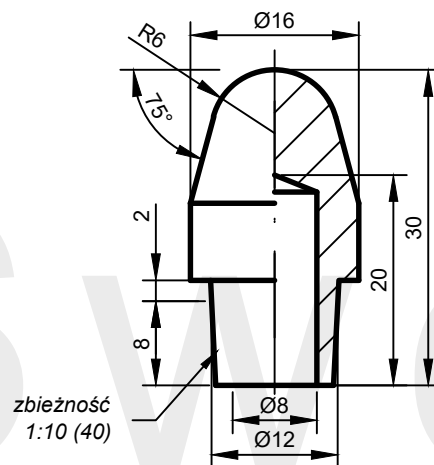
40

Karta katalogowa

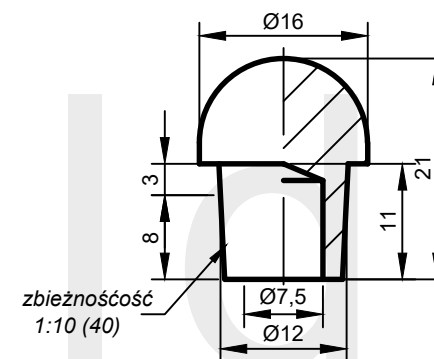
07-00-02-40



AW: E3(6)-16.25-40



AW: E3(6)-16.30-40



AW: F-16.21-40

*wykonanie na zamówienie

ASweld

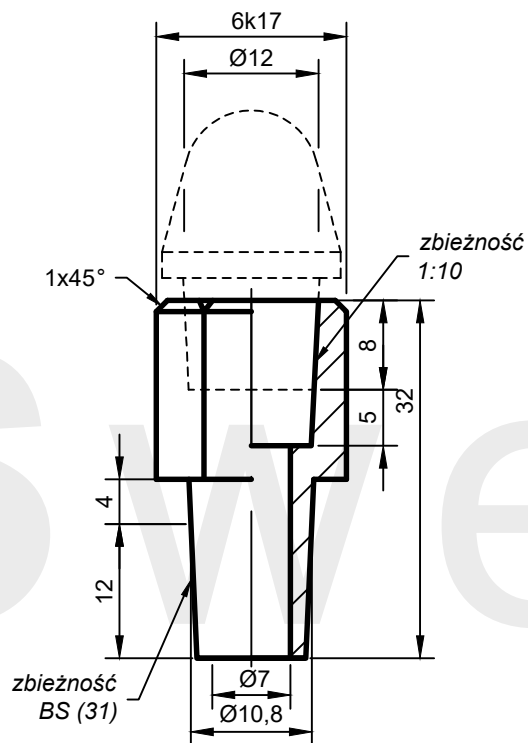
ELEKTRODA GRZYBKOWA

Chwyt elektrody

40

Karta katalogowa

07-00-03-40



AW: GN40-6k17.32-31*

*wykonanie na zamówienie

ASweld

OBSADA ELEKTROD GRZYBKOWYCH
PROSTA

Chwył elektrody

31/40

Karta katalogowa

07-01-01-31

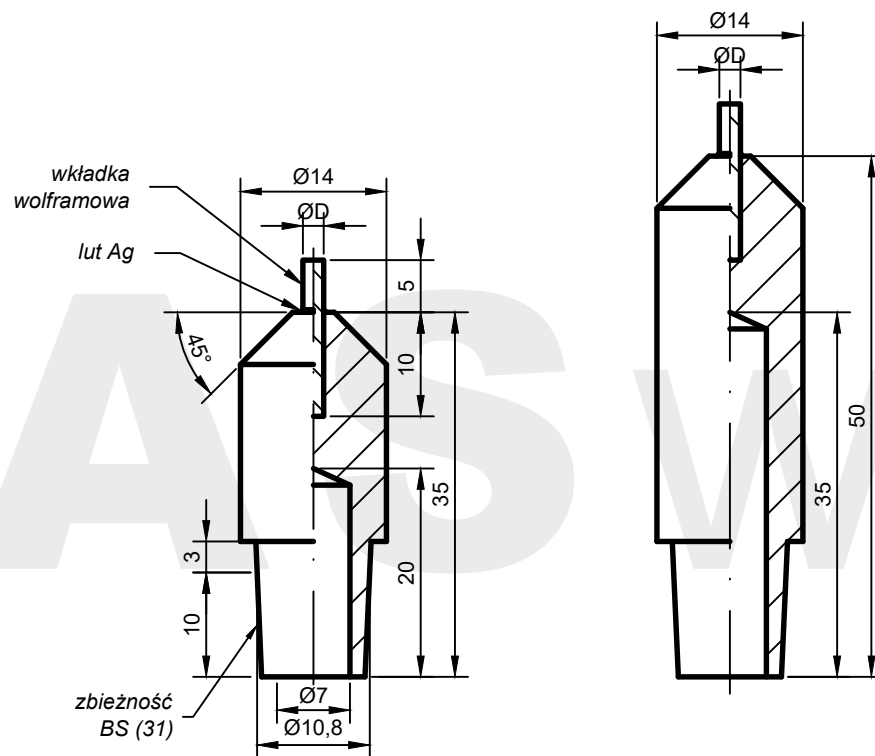
ELEKTRODY WOLFRAMOWE

STOŻEK NR 31

zbieżność BS $\varnothing 10,8$

Karty katalogowe: 09-__-__-31





AW: WØD-14.35-31*

AW: WØD-14.50-31*

ØD
1,6
2
2,4
3,2
4

*wykonanie na zamówienie

ASweld

ELEKTRODA PROSTA
Z WKŁADKĄ WOLFRAMOWĄ DO ZGRZEWANIA MIEDZI

Chwył elektrody

31

Karta katalogowa

09-01-01-31

ASweld

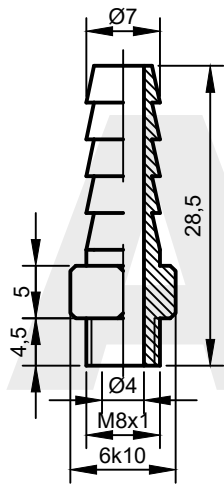
ŚWIECE ELEKTRODOWE

STOŻEK NR 31

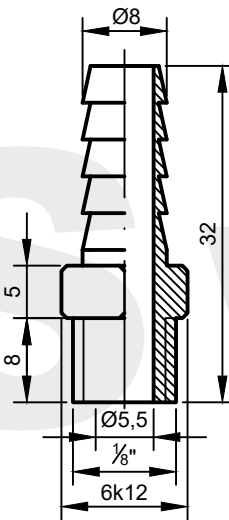
zbieżność BS $\varnothing 10,8$

Karty katalogowe: 10-__-__-31

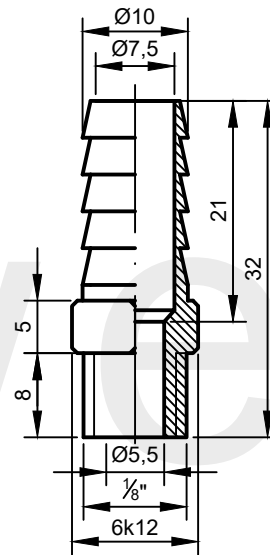




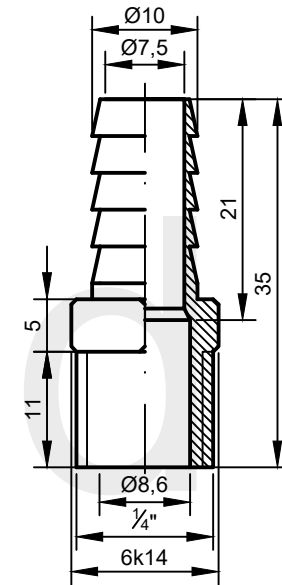
AW: K7-8M1



AW: K8-1G8

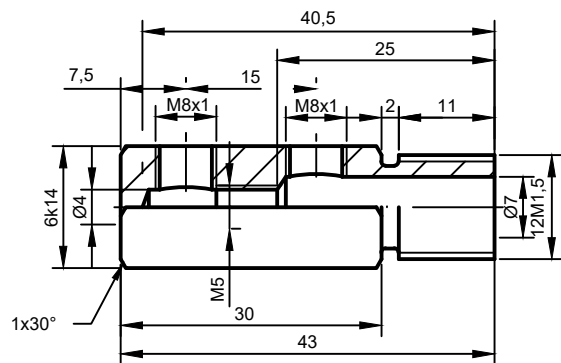


AW: K10-1G8

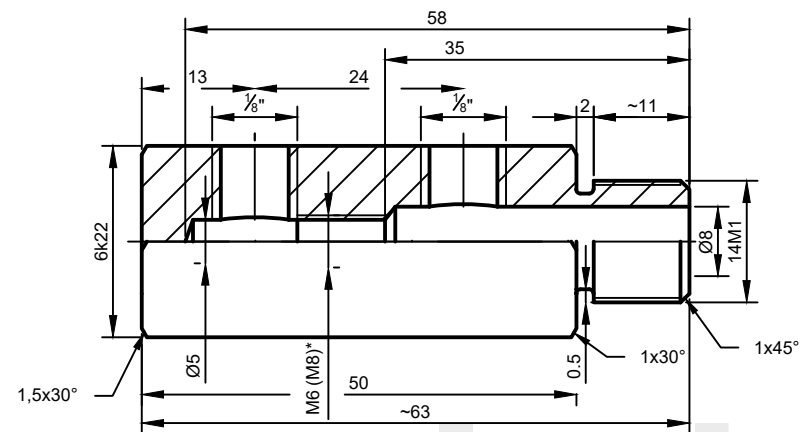


AW: K10-1G4

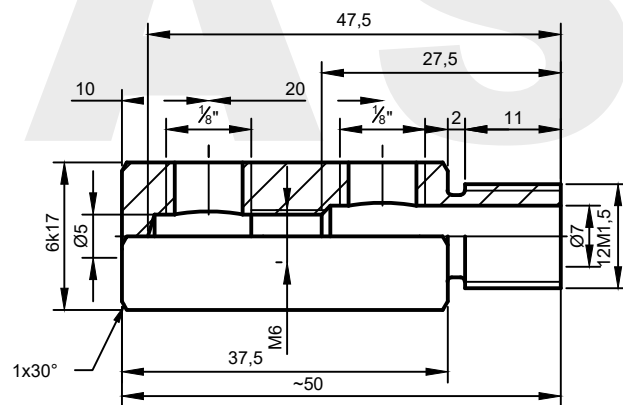
*wykonanie na zamówienie



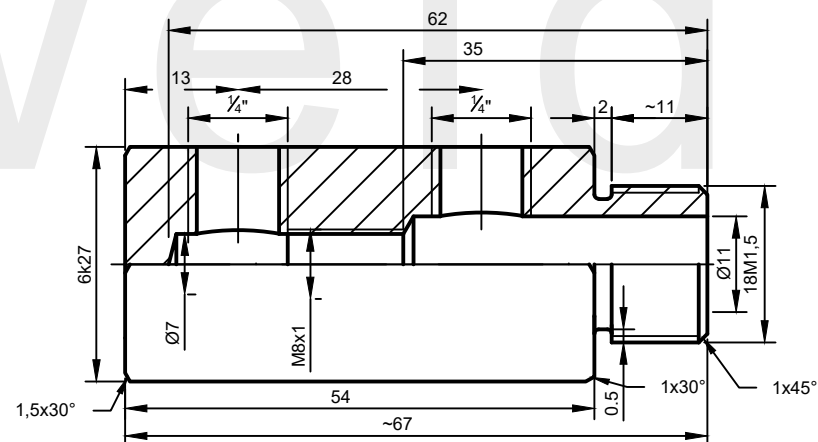
AW: R12M1,5-6k14.43-8M1*



AW: R14M1-6k22.63-1G8



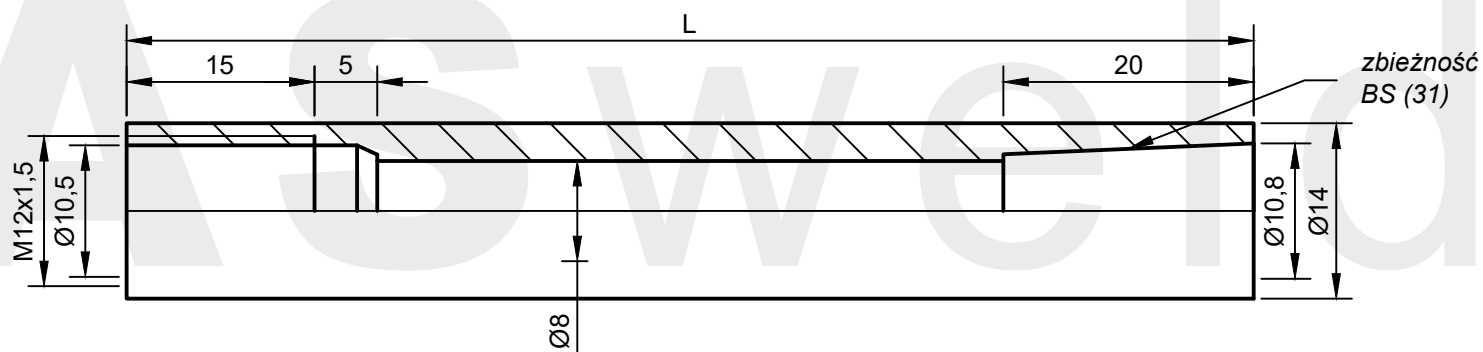
AW: R12M1,5-6k17.50-1G8*



AW: R18M1,5-6k27.67-1G4*

*wykonanie na zamówienie

	L[mm]
SC42-14.90	90
SC42-14.210	210



AW: SC31-14.L

*wykonanie na zamówienie

ASweld

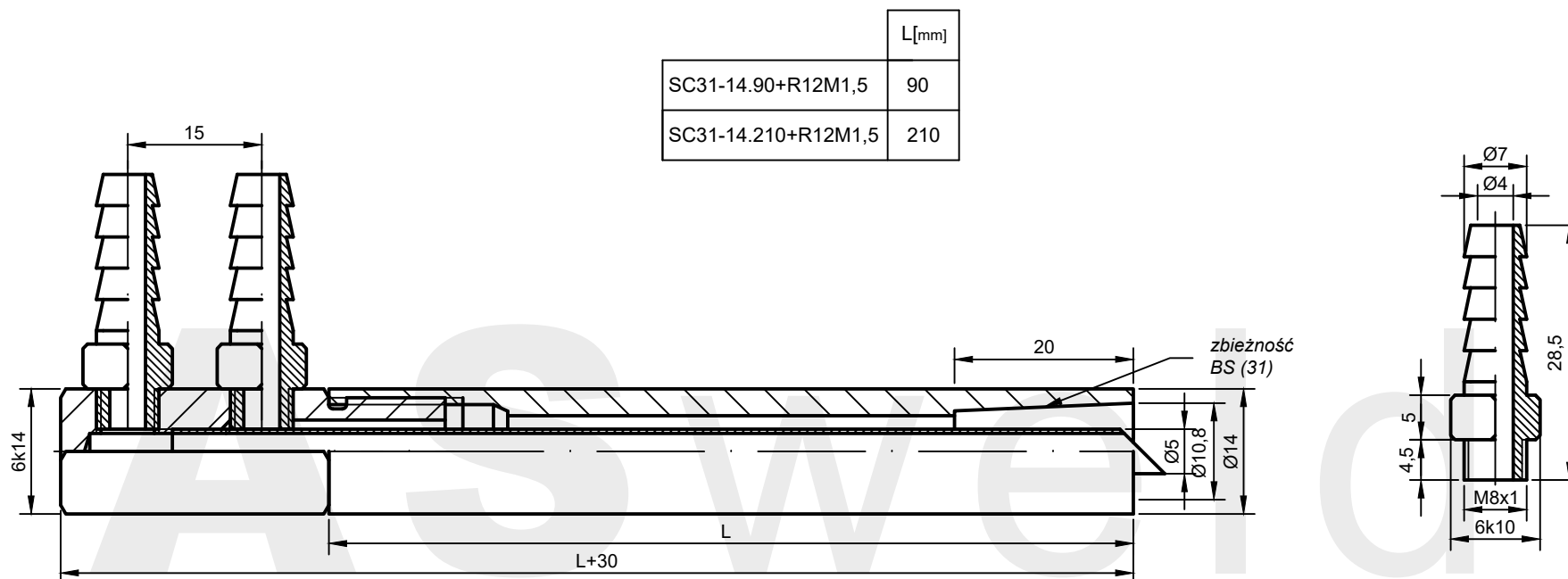
ŚWIECA

Mocowanie

31

Karta katalogowa

10-01-01-31



AW: SC31-14.L+R12M1,5

*wykonanie na zamówienie

ASweld

ŚWIECA Z ROZDZIELACZEM

Mocowanie

31

Karta katalogowa

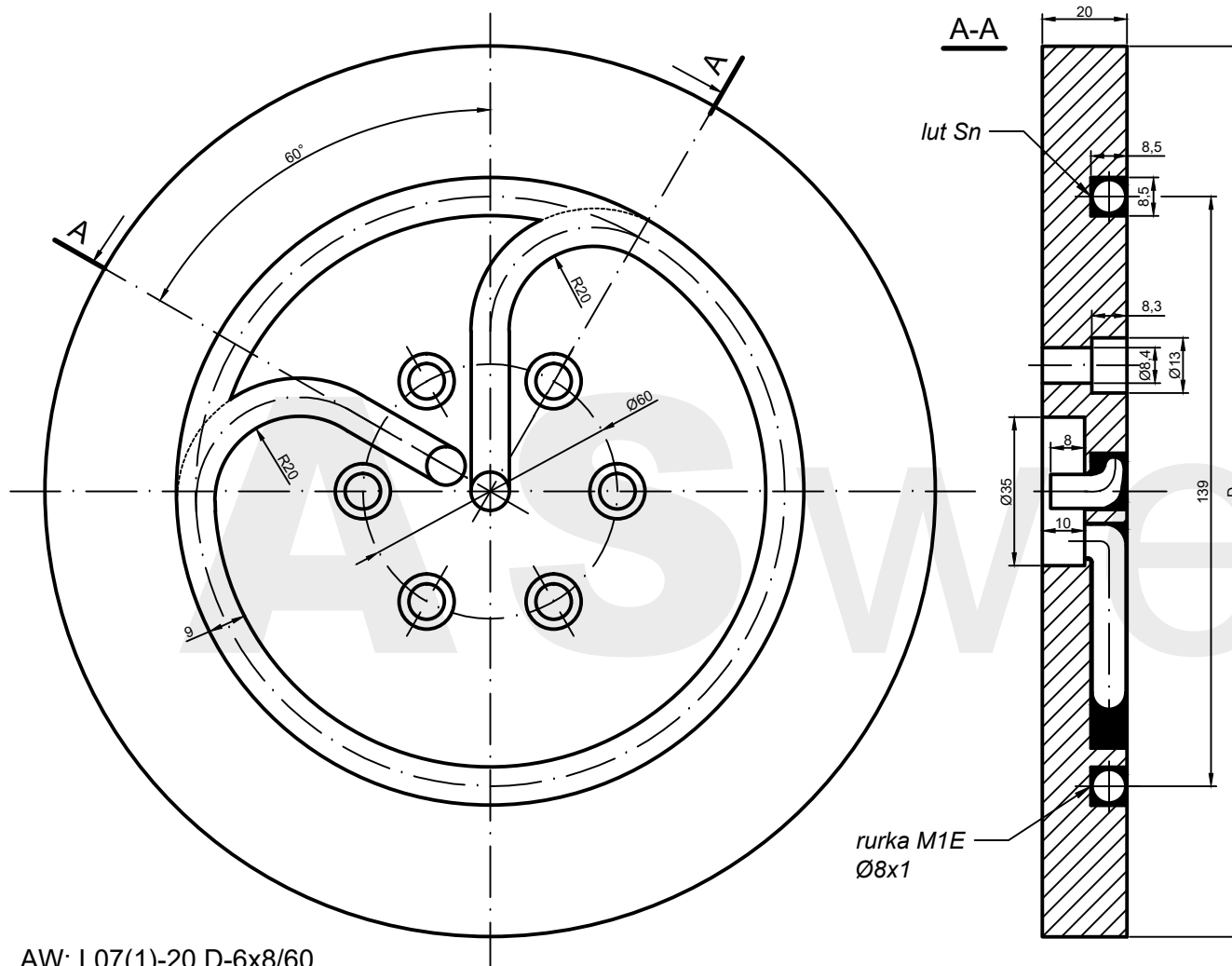
10-02-01-31

ASweld

ELEKTRODY KRAŹKOWE

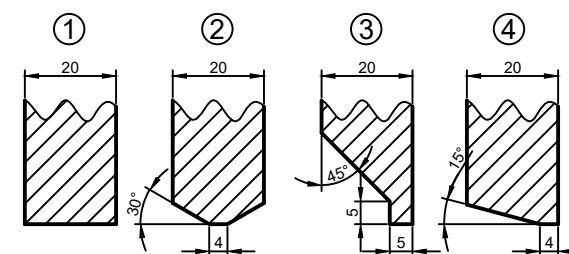
Karty katalogowe: 11-__-__-__





Elektroda	Typ ostrzenia	D
L07(1)-20.210-6x8/60*	1	210
L07(1)-20.240-6x8/60*	1	240
L07(2)-20.210-6x8/60*	2	210
L07(2)-20.240-6x8/60*	2	240
L07(3)-20.210-6x8/60*	3	210
L07(3)-20.240-6x8/60*	3	240
L07(4)-20.220-6x8/60*	4	220
L07(4)-20.240-6x8/60*	4	240

Typy ostrzenia



*wykonanie na zamówienie

AW: L07(1)-20.D-6x8/60

ASweld

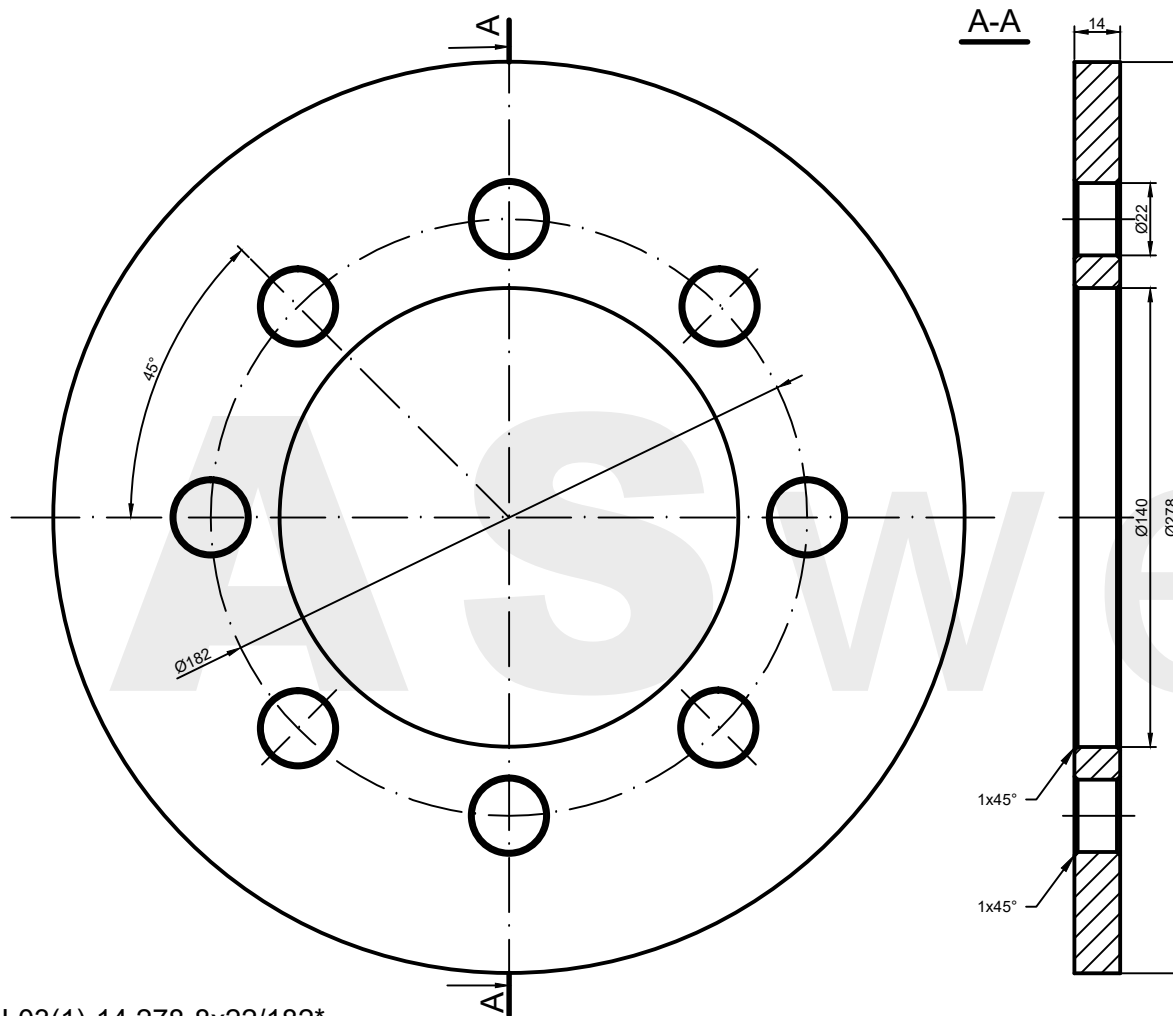
**ELEKTRODA KRAŻKOWA
Z CHŁODZENIEM BEZPOŚREDNIM**

Mocowanie

6x8/60

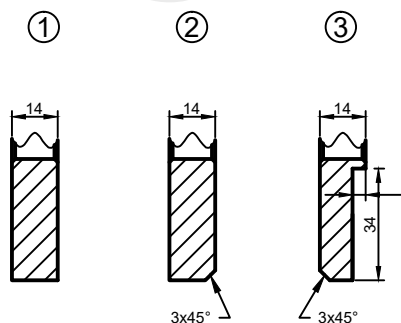
Karta katalogowa

11-01-01-6x8/60



Elektroda	Typ ostrzenia
L03(1)-14.278-8x22/182*	1
L03(2)-14.278-8x22/182*	2
L03(3)-14.278-8x22/182*	3

Typy ostrzenia



*wykonanie na zamówienie

AW: L03(1)-14.278-8x22/182*

ASweld

ELEKTRODA KRAŹKOWA

Mocowanie

8x22/182

Karta katalogowa

11-01-02-8x22/182

Biuro:

NIP: 898-117-63-97
ul. Grunwaldzka 22
50-355 Wrocław
Tel: 600 469 939
e-mail: krzysztof.wojtal@asweld.pl

Produkcja elektrod:

Ul. Jana Długosza 2-6, Budynek 7
51-162 Wrocław
Tel: 530 718 577
e-mail: elektrody@asweld.pl

