

KATALOG ELEKTROD DO ZGRZEWANIA REZYSTANCYJNEGO

STOŻEK NR 44

zbieżność 1:10 Ø12,7



KARTY KATALOGOWE

PRODUKTY

01.....	ELEKTRODY PROSTE
02.....	ELEKTRODY ODSADZONE KUTE
03.....	ELEKTRODY ODSADZONE GIĘTE
04.....	ELEKTRODY ODSADZONE PODWÓJNIE GIĘTE
05.....	ELEKTRODY PŁASKIE
06.....	OBSADY ELEKTROD NASADKOWYCH
07.....	OBSADY ELEKTROD GRZYBKOWYCH I WKRĘTEK ELEKTRODOWYCH
08.....	ELEKTRODY DO ZGRZEWANIA ŚRUB I NAKRĘTEK
09.....	ELEKTRODY WOLFRAMOWE
10.....	ŚWIECE ELEKTRODOWE
11.....	ELEKTRODY KRAŻKOWE
12.....	MATERIAŁY, OSPRZĘT, URZĄDZENIA DO ZGRZEWAREK

ASweld

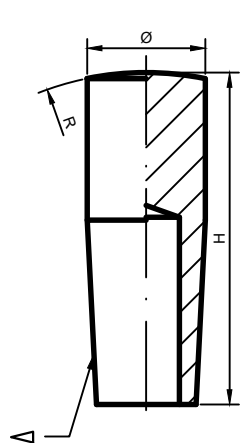
ELEKTRODY PROSTE

STOŻEK NR 44

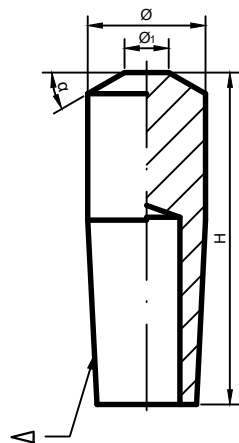
zbieżność 1:10 Ø12,7

Karty katalogowe: 01-__-__-44

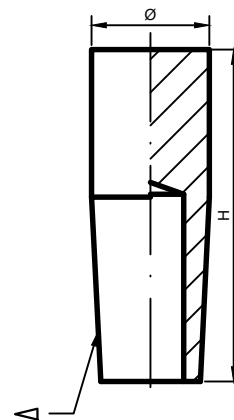




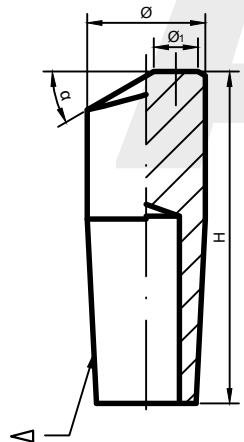
AW: A(R)-Ø.H-Δ



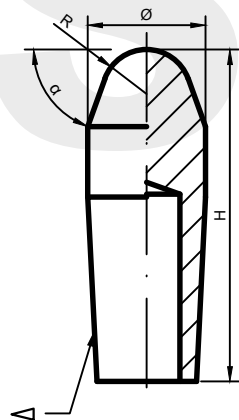
AW: Bk(Ø1)-Ø.H-Δ



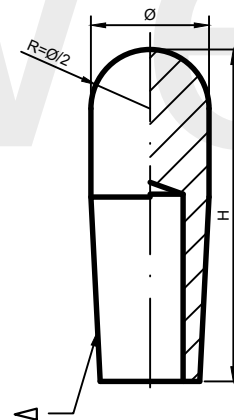
AW: C-Ø.H-Δ



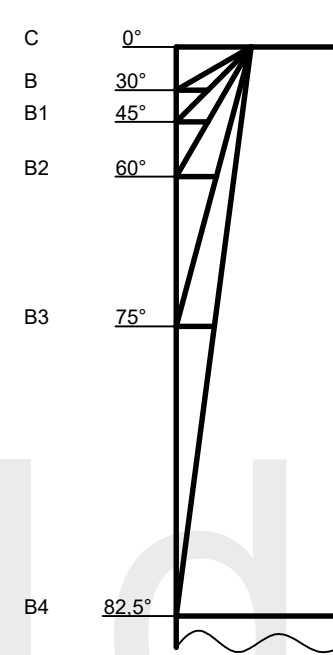
AW: Dk(Ø1)-Ø.H-Δ



AW: Ek(R)-Ø.H-Δ

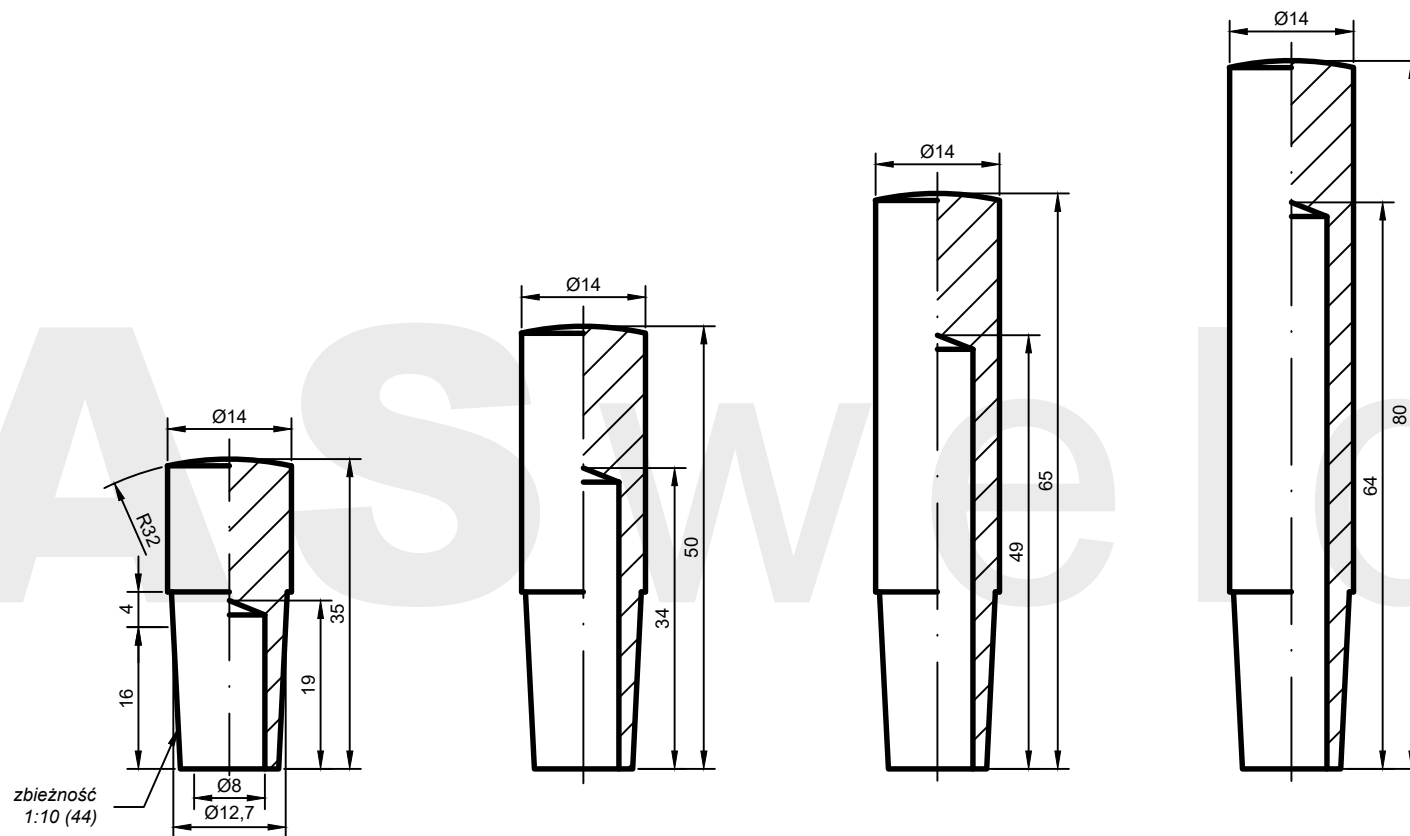


AW: F-Ø.H-Δ



k	α
-	30°
1	45°
2	60°
3	75°
4	82,5°





AW: A(32)-14.35-44*

AW: A(32)-14.50-44*

AW: A(32)-14.65-44*

AW: A(32)-14.80-44*

*wykonanie na zamówienie

ASweld

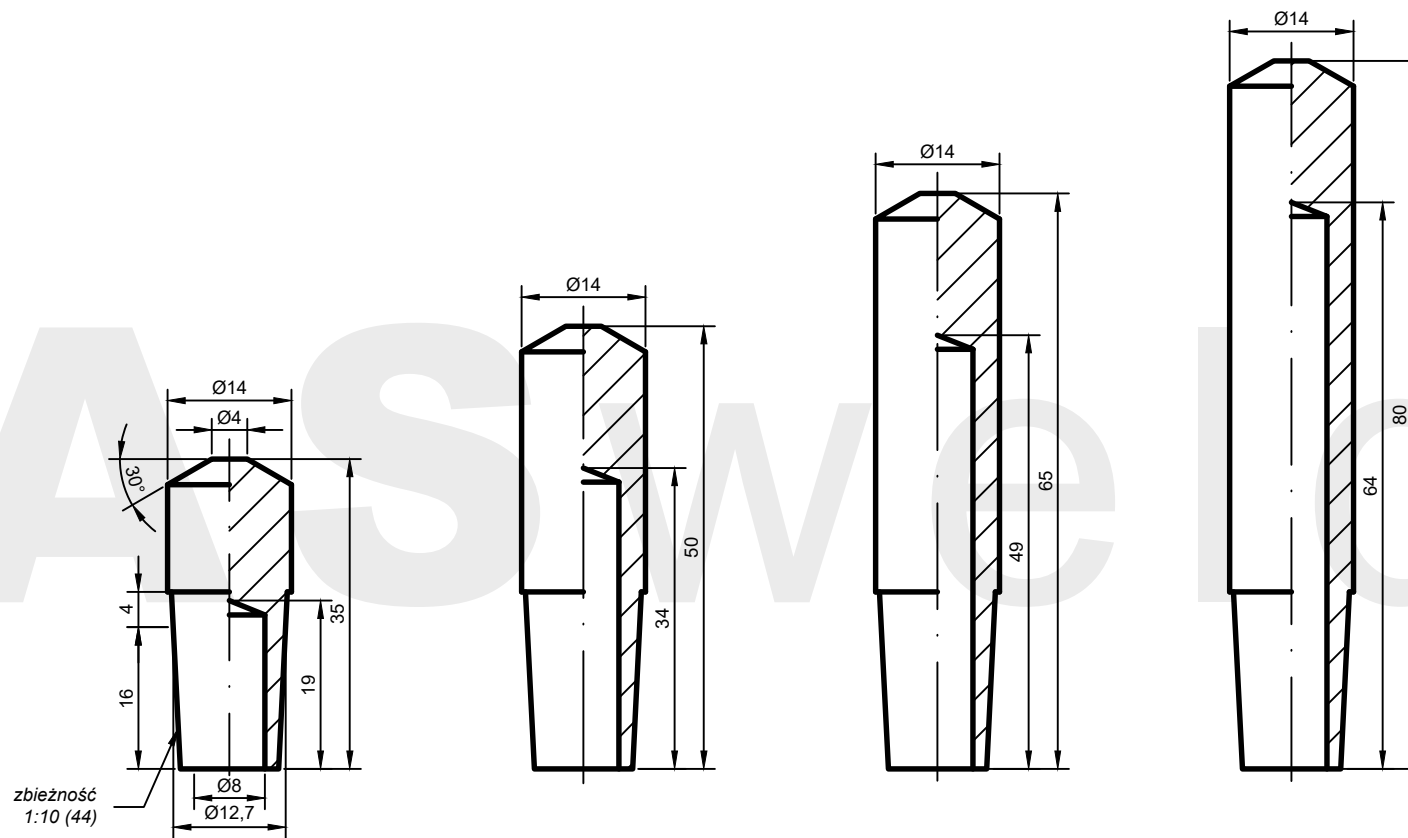
ELEKTRODA PROSTA
forma A

Chwył elektrody

44

Karta katalogowa

01-01-01-44



AW: B(4)-14.35-44*

AW: B(4)-14.50-44*

AW: B(4)-14.65-44*

AW: B(4)-14.80-44*

*wykonanie na zamówienie

ASweld

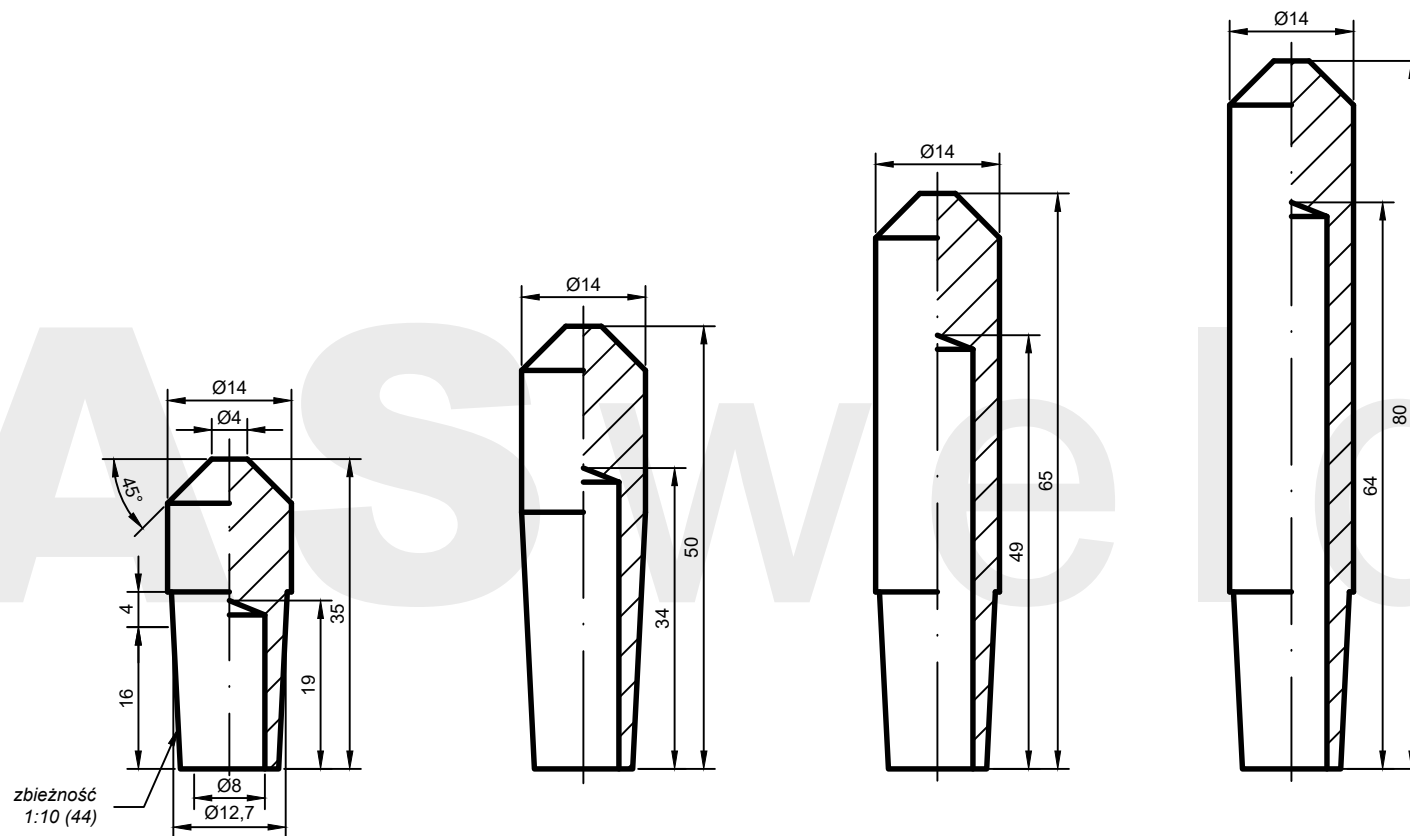
ELEKTRODA PROSTA
forma B

Chwył elektrody

44

Karta katalogowa

01-02-01-44



AW: B1(4)-14.35-44*

AW: B1(4)-14.50-44*

AW: B1(4)-14.65-44*

AW: B1(4)-14.80-44*

*wykonanie na zamówienie

ASweld

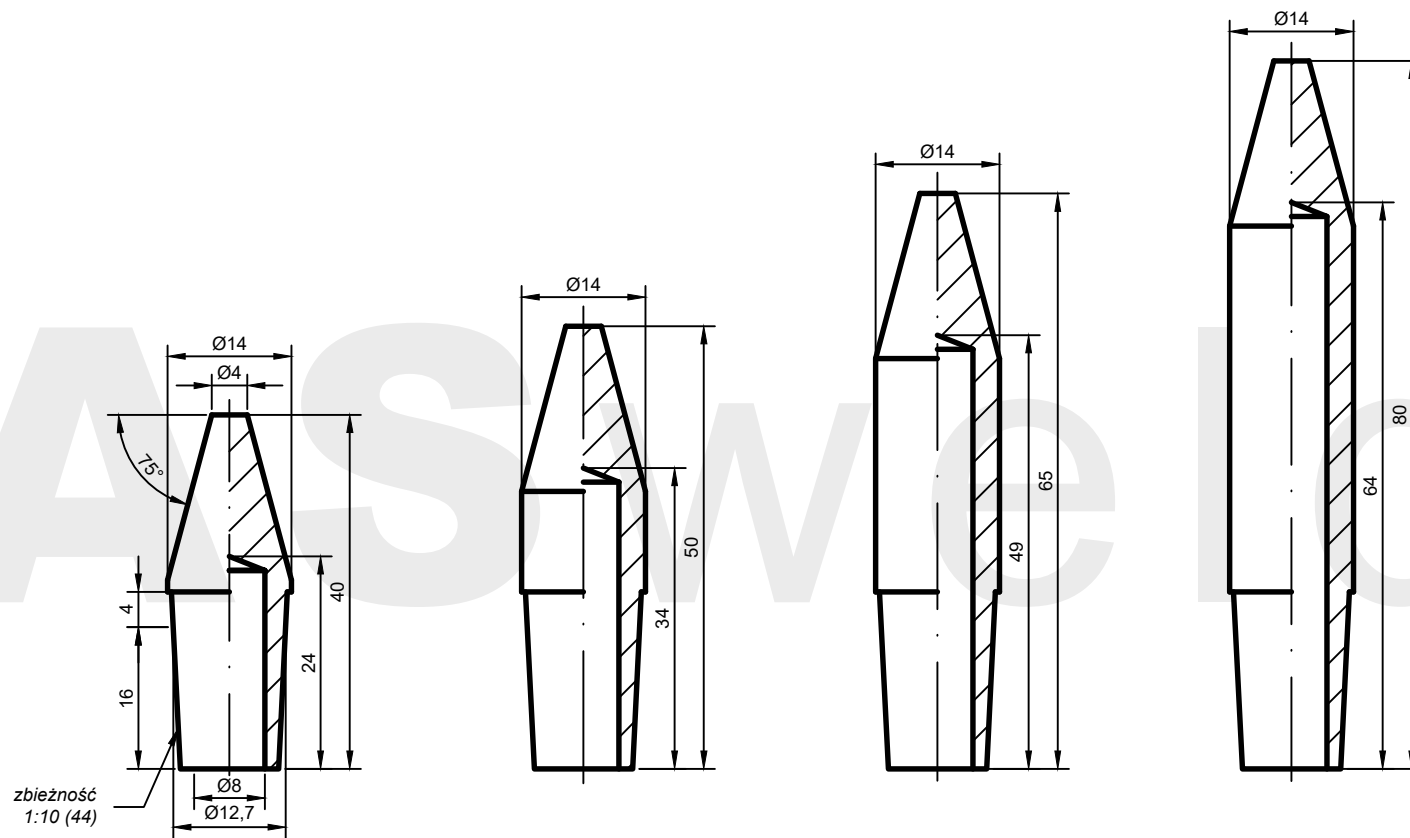
ELEKTRODA PROSTA
forma B1

Chwyt elektrody

44

Karta katalogowa

01-02-02-44



AW: B3(4)-14.40-44*

AW: B3(4)-14.50-44*

AW: B3(4)-14.65-44*

AW: B3(4)-14.80-44*

*wykonanie na zamówienie

ASweld

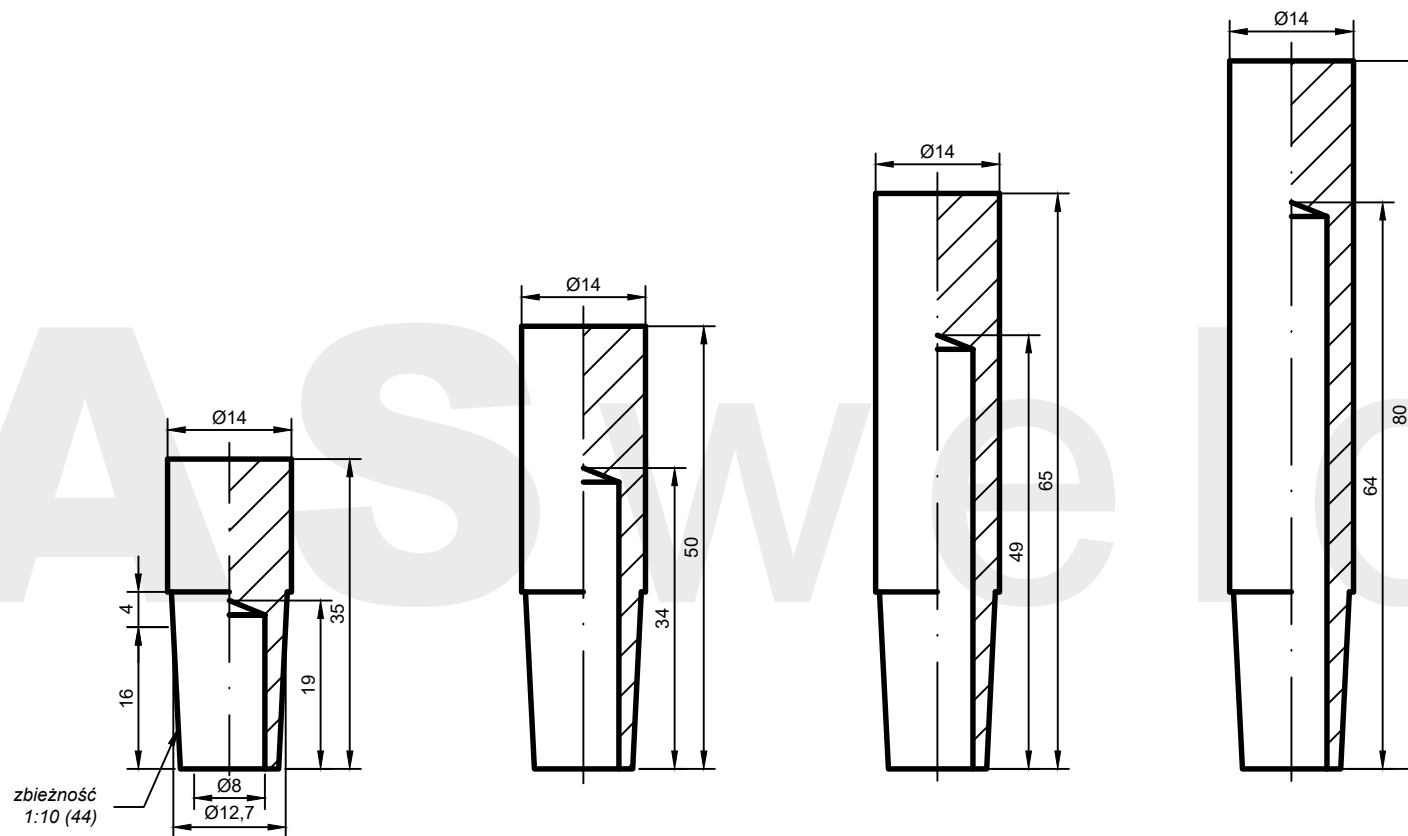
ELEKTRODA PROSTA
forma B3

Chwył elektrody

44

Karta katalogowa

01-02-03-44



AW: C-14.35-44*

AW: C-14.50-44*

AW: C-14.65-44*

AW: C-14.80-44*

*wykonanie na zamówienie

ASweld

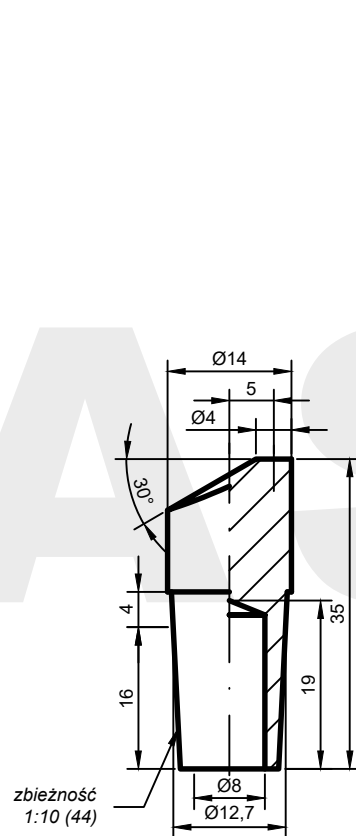
ELEKTRODA PROSTA
forma C

Chwył elektrody

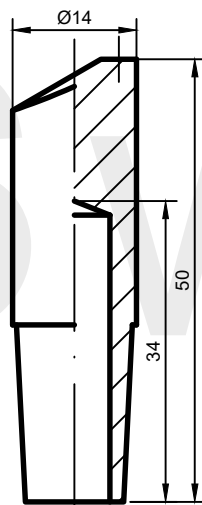
44

Karta katalogowa

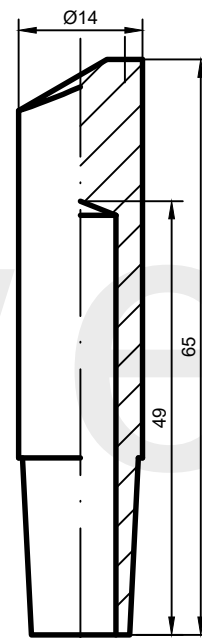
01-03-01-44



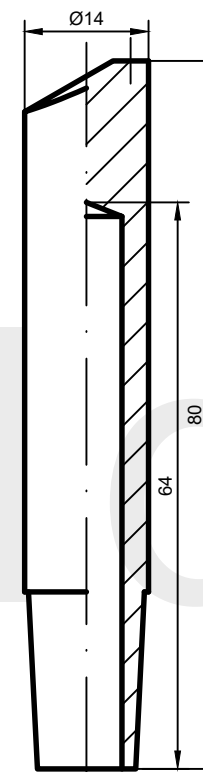
AW: D(4)-14.35-44*



AW: D(4)-14.50-44*



AW: D(4)-14.65-44*



AW: D(4)-14.80-44*

*wykonanie na zamówienie

ASweld

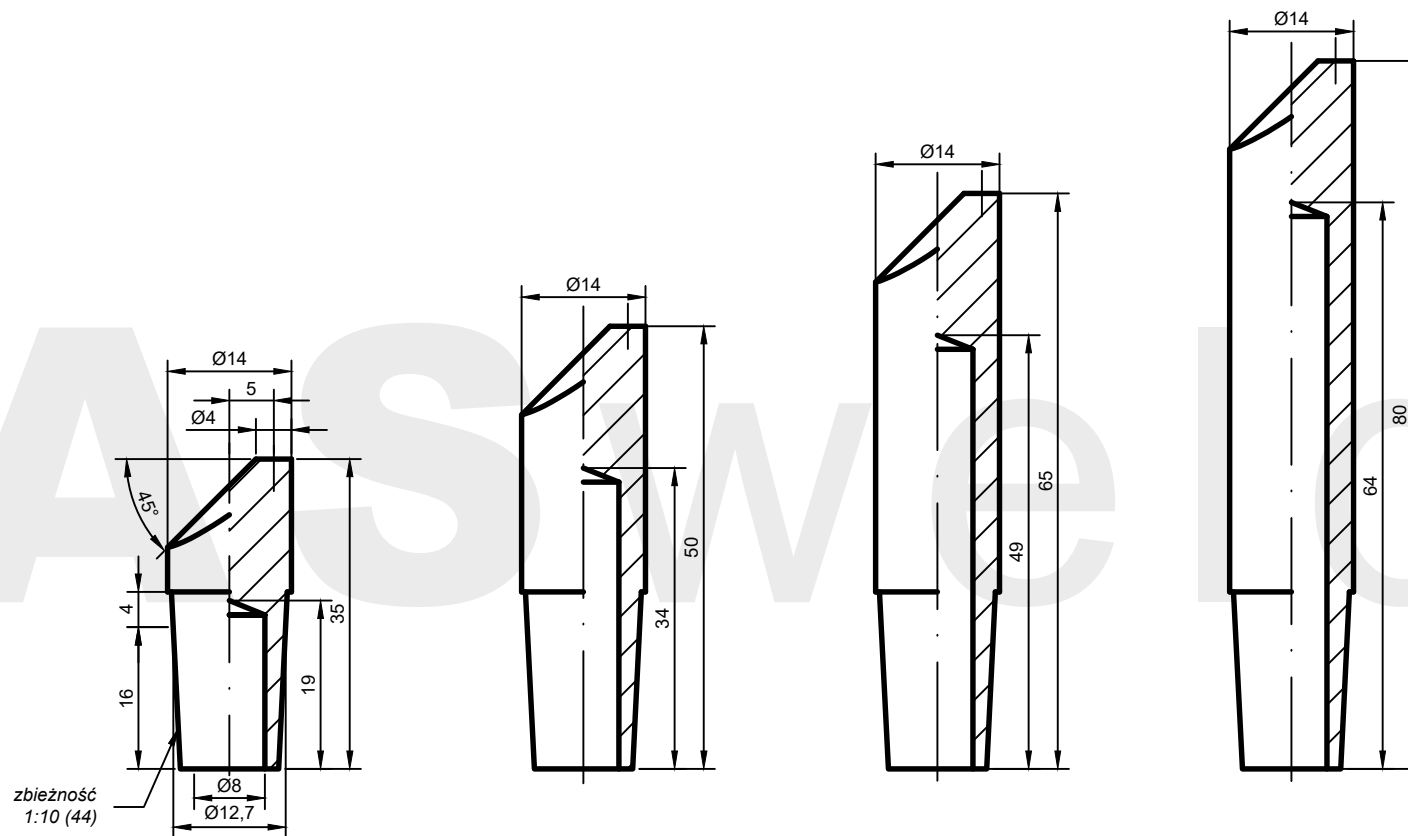
ELEKTRODA PROSTA
forma D

Chwył elektrody

44

Karta katalogowa

01-04-01-44



AW: D1(4)-14.35-44*

AW: D1(4)-14.50-44*

AW: D1(4)-14.65-44*

AW: D1(4)-14.80-44*

*wykonanie na zamówienie

ASweld

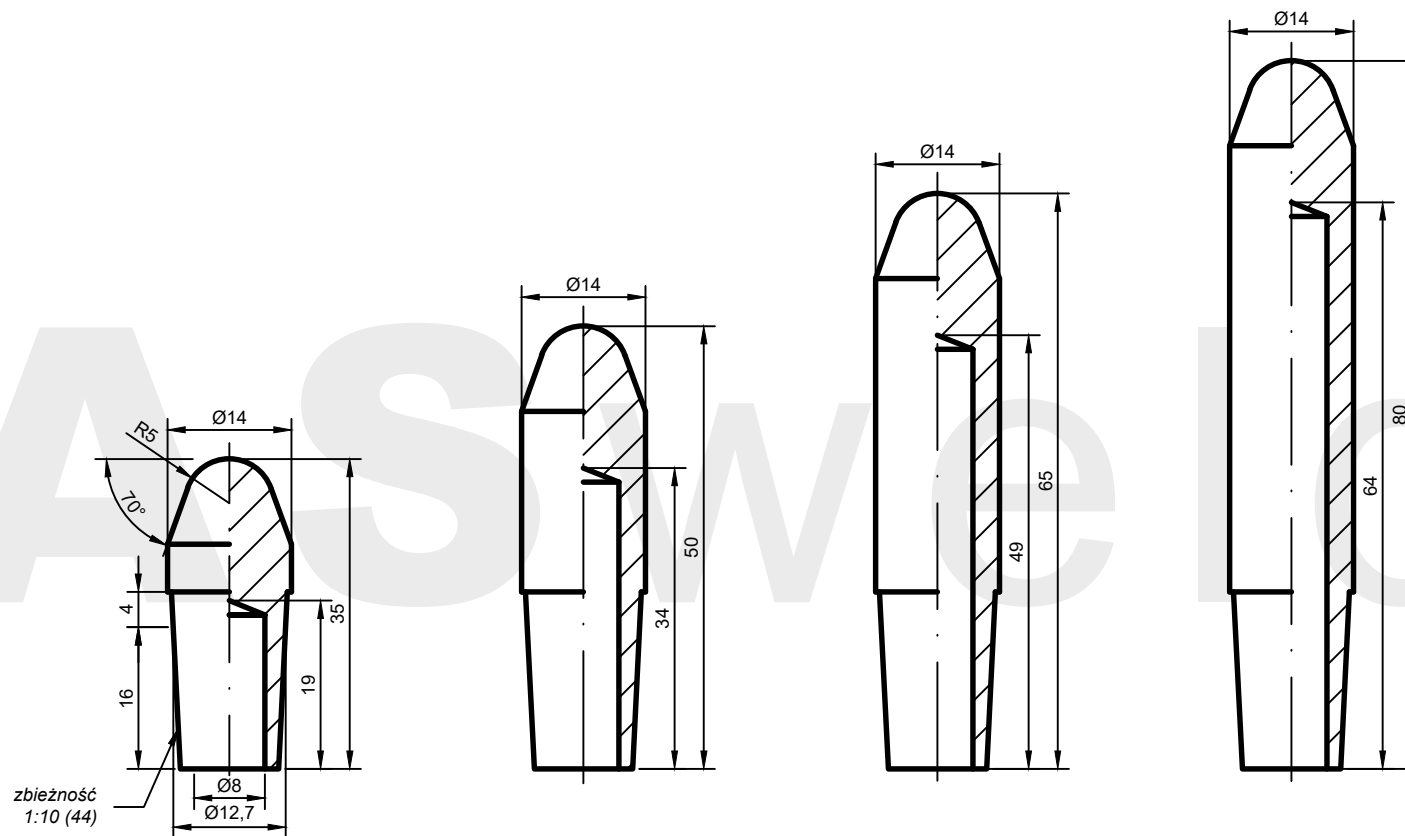
ELEKTRODA PROSTA
forma D1

Chwył elektrody

44

Karta katalogowa

01-04-02-44



AW: E(5)-14.35-44*

AW: E(5)-14.50-44*

AW: E(5)-14.65-44*

AW: E(5)-14.80-44*

*wykonanie na zamówienie

ASweld

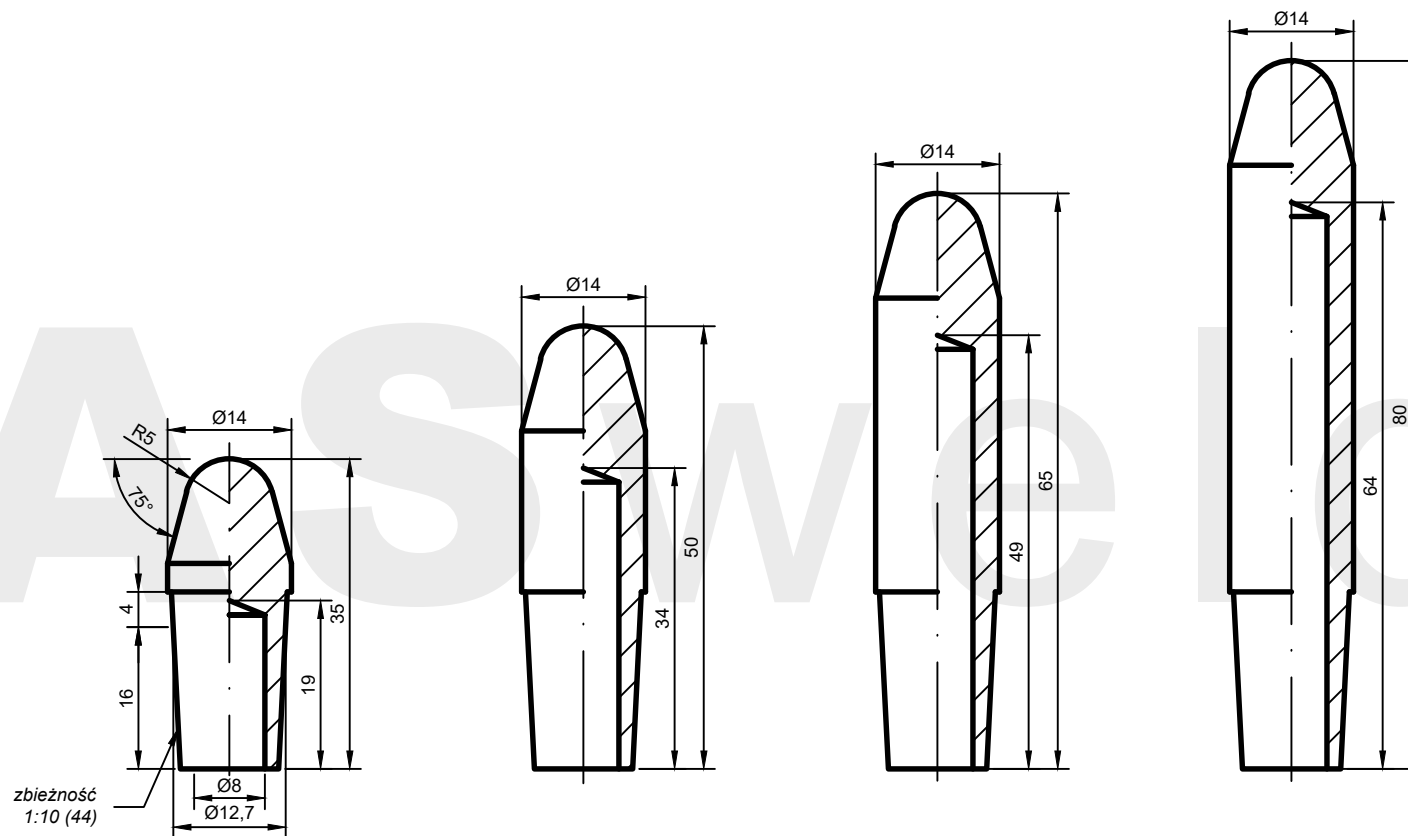
ELEKTRODA PROSTA
forma E

Chwył elektrody

44

Karta katalogowa

01-05-01-44



AW: E3(5)-14.35-44*

AW: E3(5)-14.50-44*

AW: E3(5)-14.65-44*

AW: E3(5)-14.80-44*

*wykonanie na zamówienie

ASweld

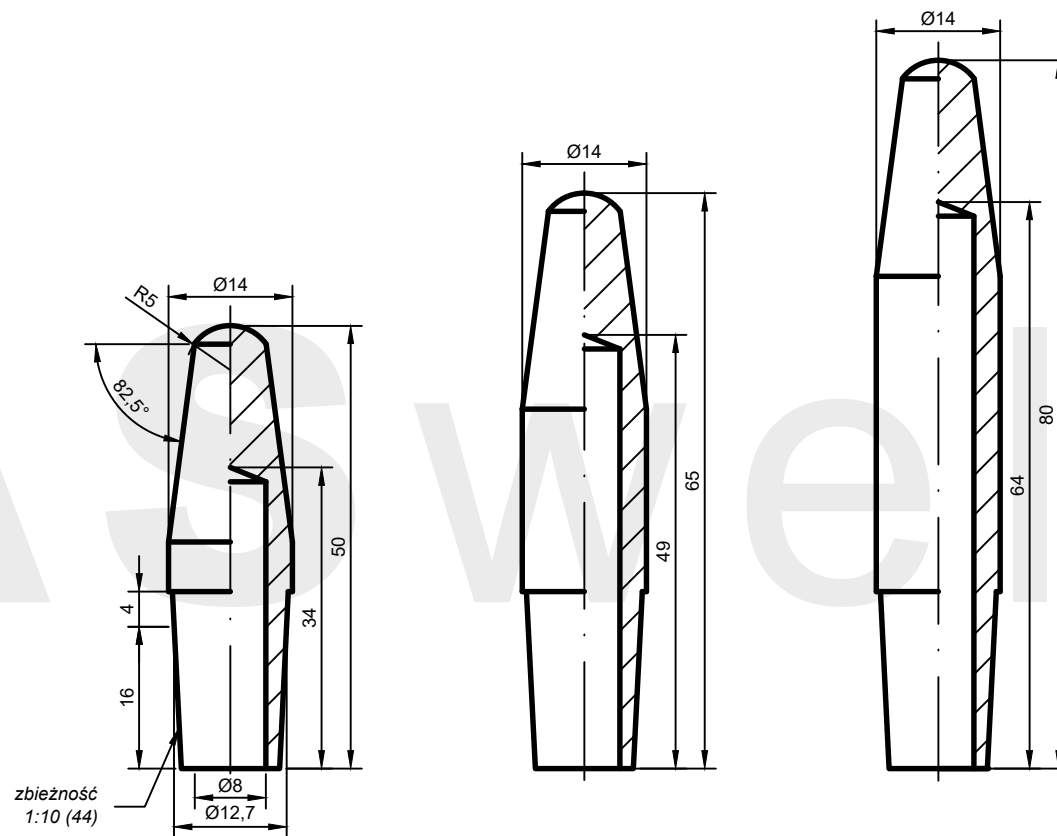
ELEKTRODA PROSTA
forma E3

Chwył elektrody

44

Karta katalogowa

01-05-02-44



AW: E4(5)-14.50-44*

AW: E4(5)-14.65-44*

AW: E4(5)-14.80-44*

*wykonanie na zamówienie

ASweld

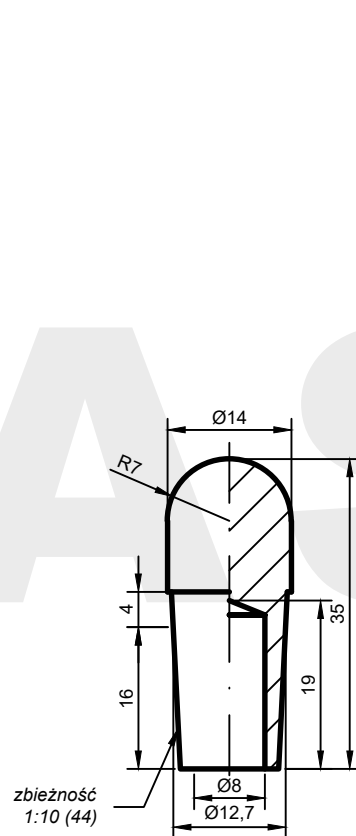
ELEKTRODA PROSTA
forma E4

Chwyt elektrody

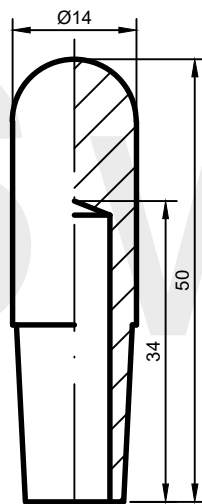
44

Karta katalogowa

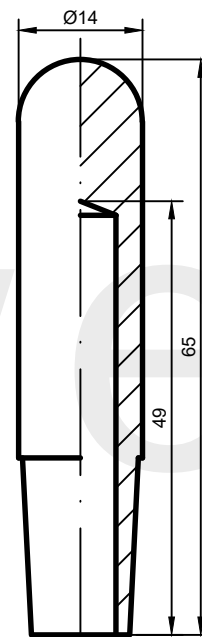
01-05-03-44



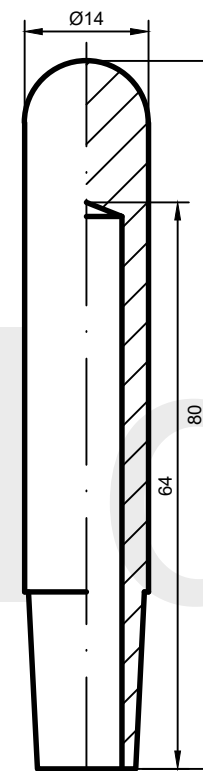
AW: F-14.35-44*



AW: F-14.50-44*



AW: F-14.65-44*



AW: F-14.80-44*

*wykonanie na zamówienie

ASweld

ELEKTRODA PROSTA
forma F

Chwył elektrody

44

Karta katalogowa

01-06-01-44

ASweld

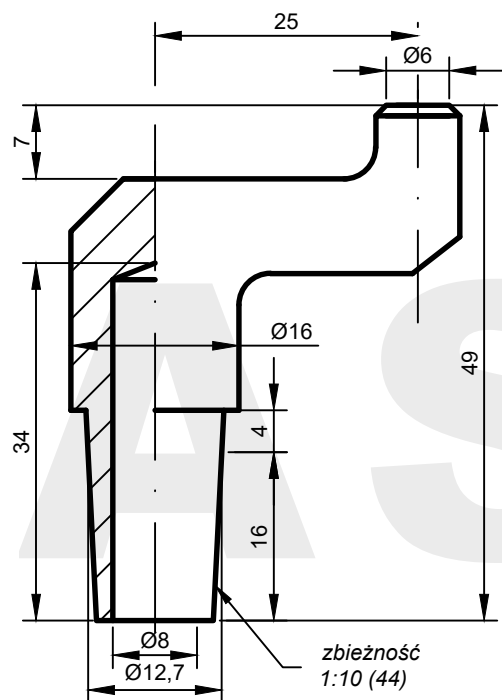
ELEKTRODY ODSADZONE KUTE

STOŻEK NR 44

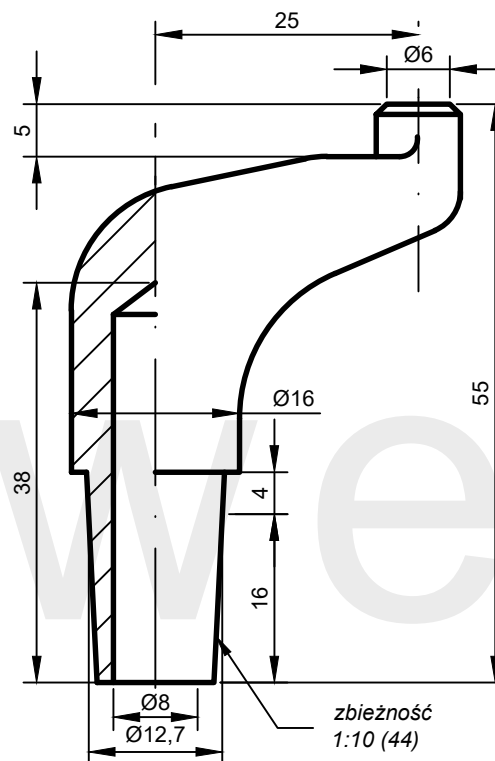
zbieżność 1:10 Ø12,7

Karty katalogowe: 02-__-__-44

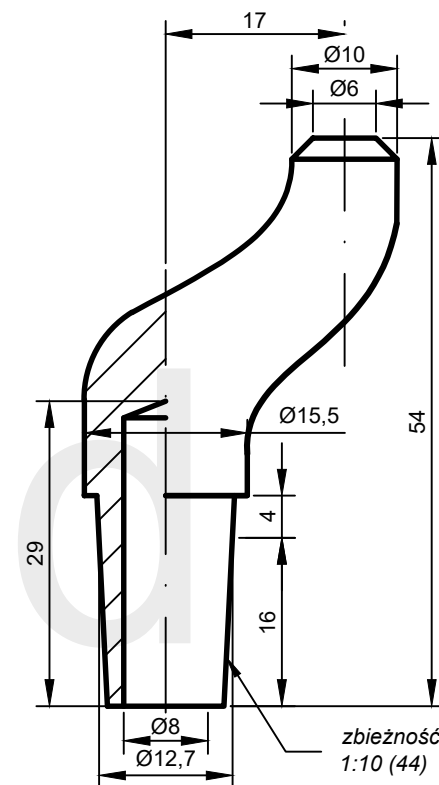




AW: F01(6)-16.49.25-44



AW: F02(6)-16.55.25-44



AW: F06(6)-15,5.54.17-44

*wykonanie na zamówienie

ASweld

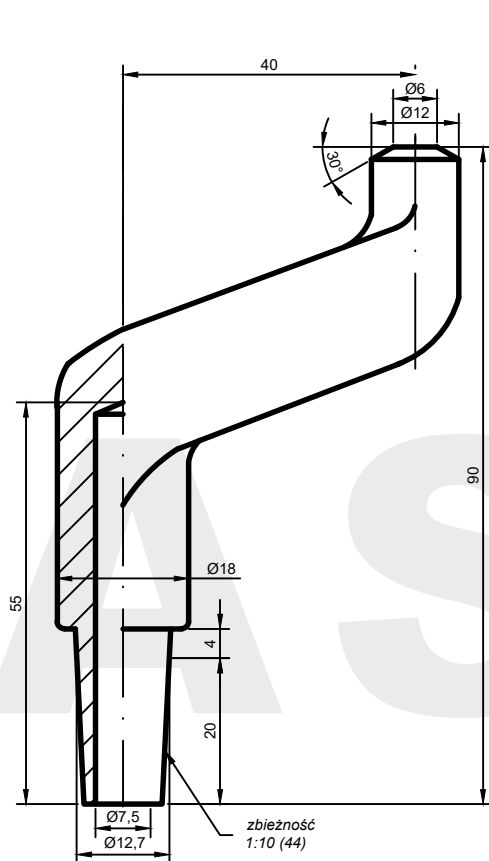
ELEKTRODA ODSADZONA
KUTA

Chwył elektrody

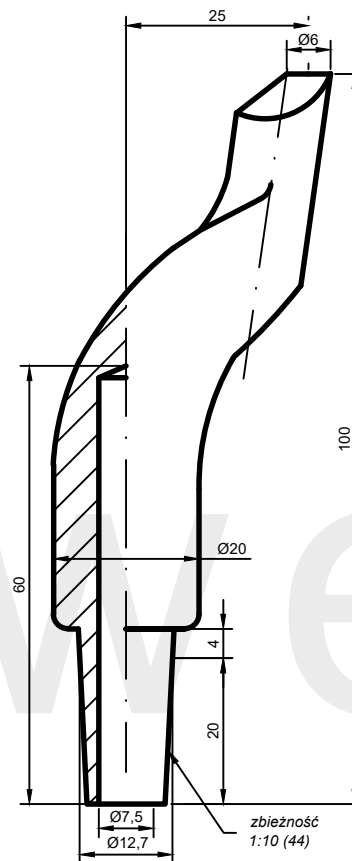
44

Karta katalogowa

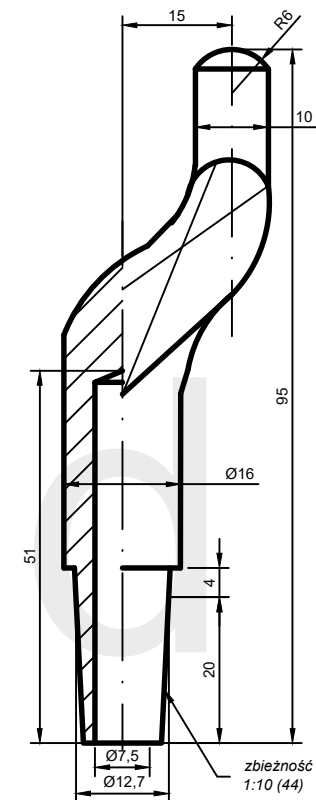
02-01-01-44



AW: F03(6)-18.90.40-44



AW: F04(6)-20.100.25-44



AW: F05(6)-16.95.15-44

*wykonanie na zamówienie

ASweld

**ELEKTRODA ODSADZONA
KUTA**

Chwył elektrody

44

Karta katalogowa

02-01-02-44

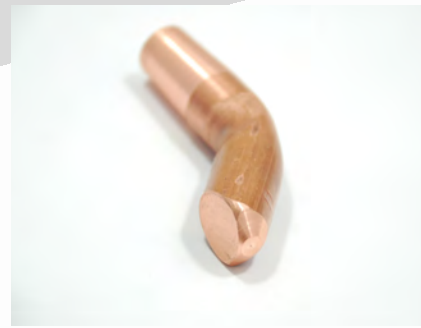
ASweld

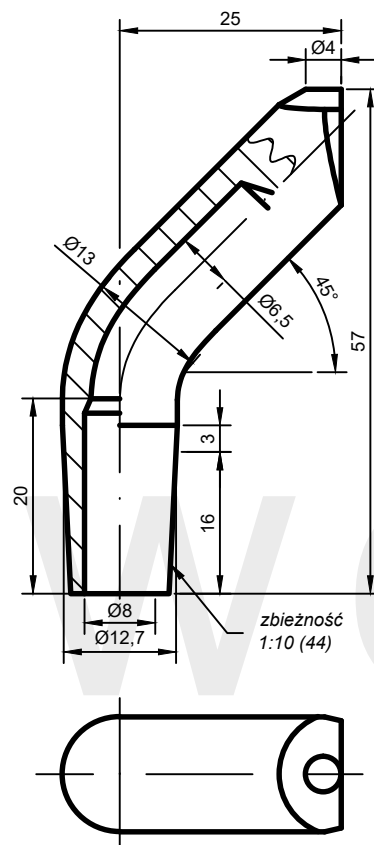
ELEKTRODY ODSADZONE GIĘTE

STOŻEK NR 44

zbieżność 1:10 Ø12,7

Karty katalogowe: 03-__-__-44





AW: G1(4)-13.57.25-44

*wykonanie na zamówienie

ASweld

ELEKTRODA ODSADZONA
GIĘTA

Chwyt elektrody

44

Karta katalogowa

03-01-01-44

ASweld

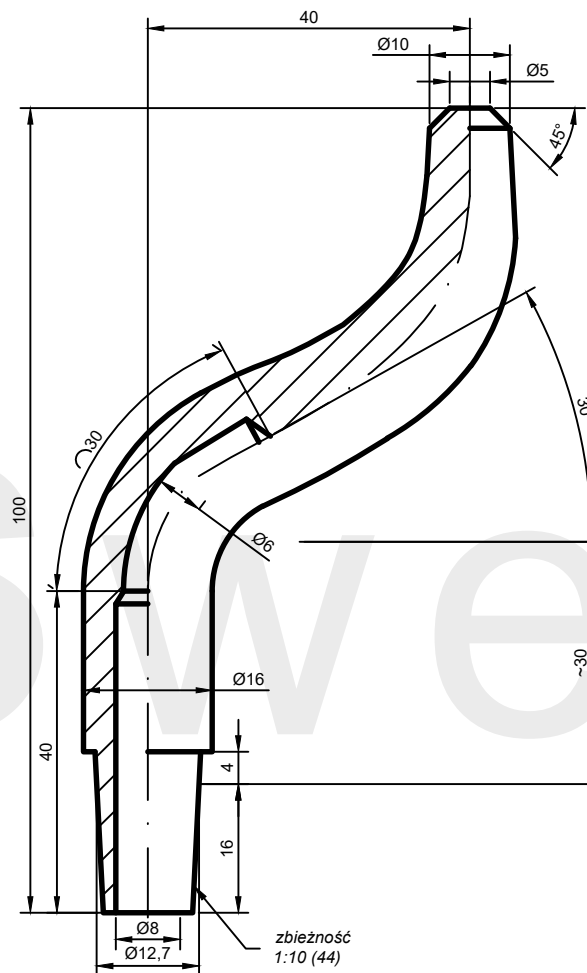
ELEKTRODY ODSADZONE PODWÓJNIE GIĘTE

STOŻEK NR 44

zbieżność 1:10 Ø12,7

Karty katalogowe: 04-__-__-44





AW: G2B1(5)-16.100.40-44

*wykonanie na zamówienie

ASweld

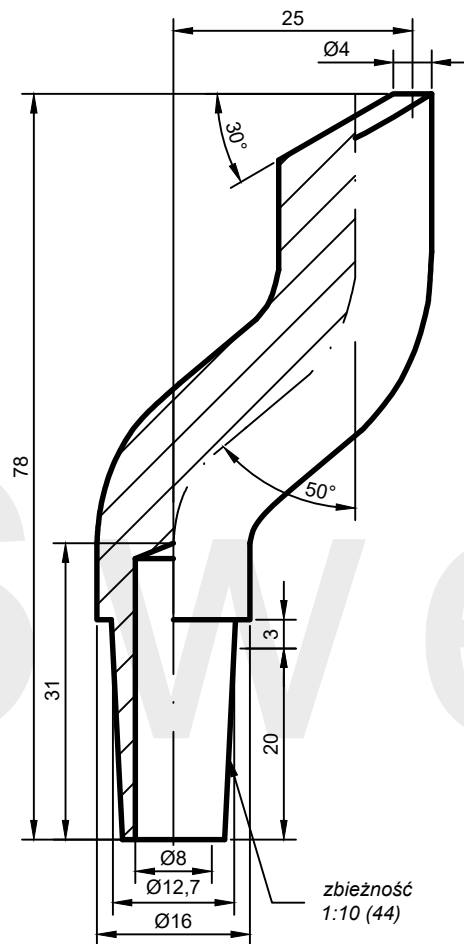
**ELEKTRODA ODSADZONA
PODWÓJNIE GIĘTA**

Chwył elektrody

44

Karta katalogowa

04-01-01-44



AW: G2D(4)-16.78.25-44

*wykonanie na zamówienie

ASweld

ELEKTRODA ODSADZONA
PODWÓJNIE GIĘTA

Chwył elektrody

44

Karta katalogowa

04-01-02-44

ASweld

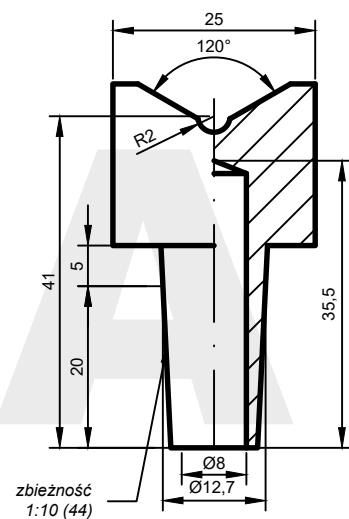
ELEKTRODY PŁASKIE

STOŻEK NR 44

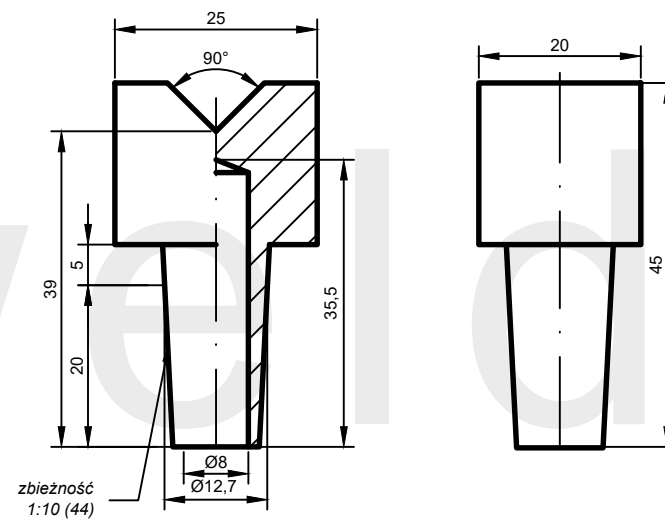
zbieżność 1:10 Ø12,7

Karty katalogowe: 05-__-__-44





AW: V120-20x25.45-44



AW: V90-20x25.45-44

*wykonanie na zamówienie

ASweld

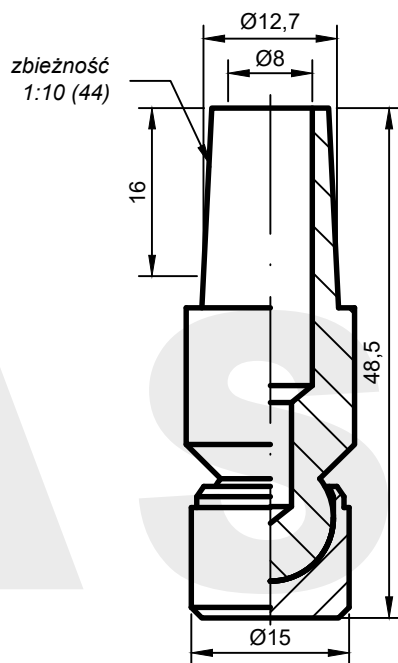
**ELEKTRODA PŁASKA
Z PRYZMĄ**

Chwyt elektrody

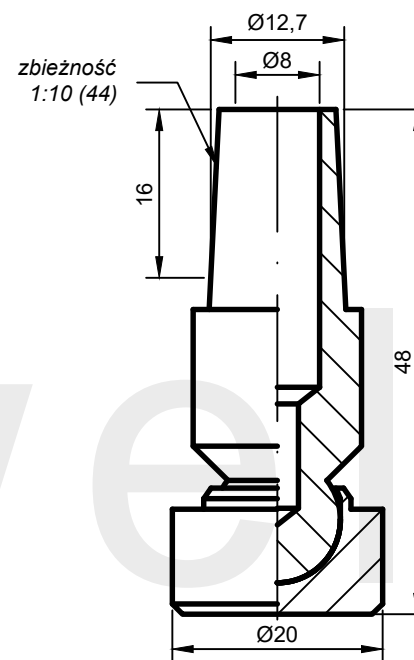
44

Karta katalogowa

05-02-01-44



AW: PK12-15.48-44*



AW: PK12-20.48-44*

*wykonanie na zamówienie

ASweld

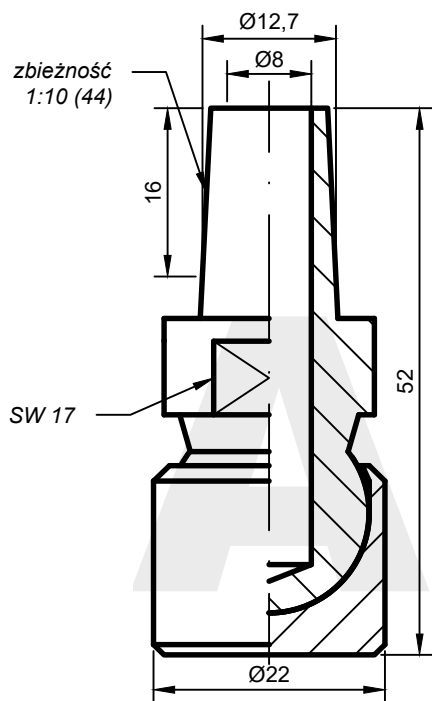
ELEKTRODA WAHLIWA
przegub K12

Chwył elektrody

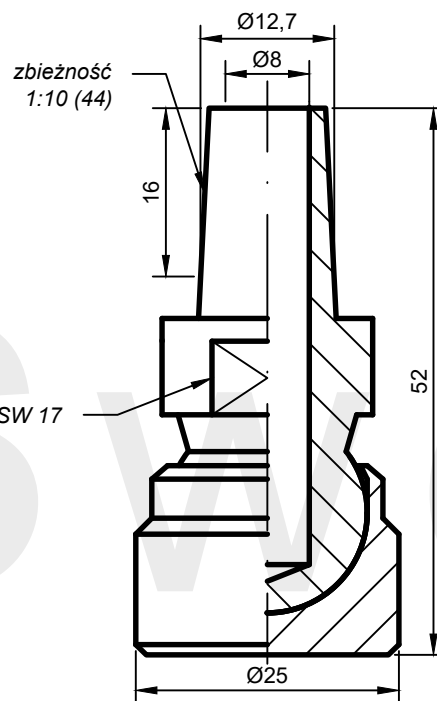
44

Karta katalogowa

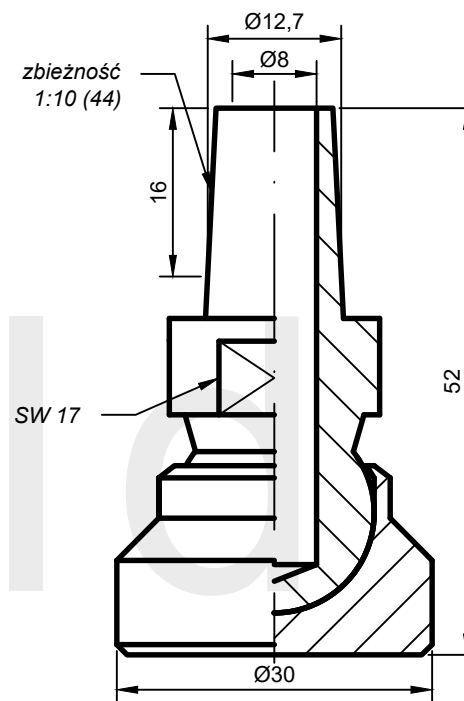
05-04-01-44



AW: PK19-22.52-44



AW: PK19-25.52-44



AW: PK19-30.52-44*

*wykonanie na zamówienie

ASweld

ELEKTRODA WAHLIWA
przegub K19

Chwył elektrody

44

Karta katalogowa

05-04-02-44

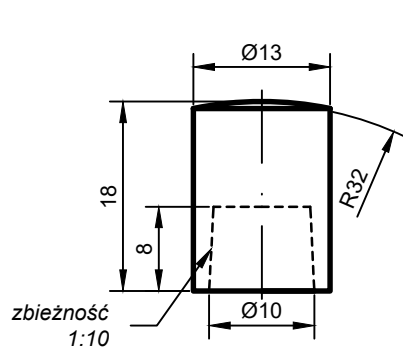
OBSADY ELEKTROD NASADKOWYCH

STOŻEK NR 44

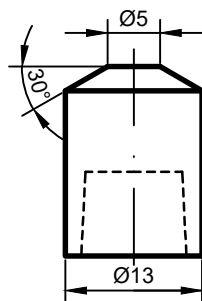
zbieżność 1:10 Ø12,7

Karty katalogowe: 06-__-__-44

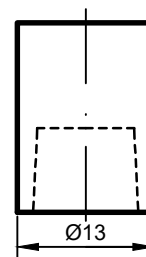




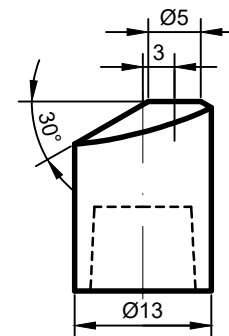
Typ: N-A13



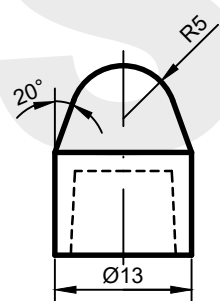
Typ: N-B13



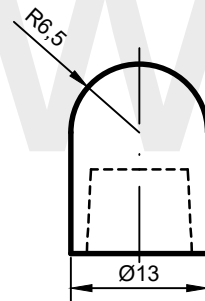
Typ: N-C13



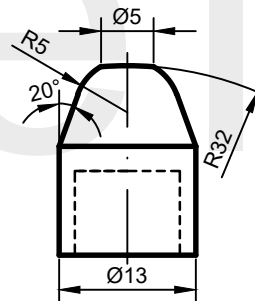
Typ: N-D13



Typ: N-E13



Typ: N-F13



Typ: N-G13

*wykonanie na zamówienie

ASweld

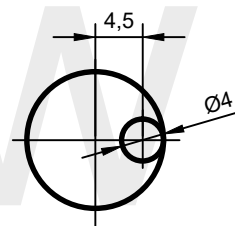
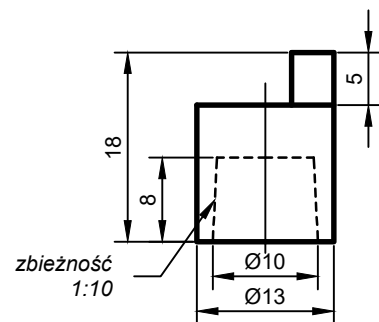
ELEKTRODA NASADKOWA
rozmiar 13

Chwyt elektrody

51

Karta katalogowa

06-00-01-51



AW: N-C13(4.5)

*wykonanie na zamówienie

ASweld

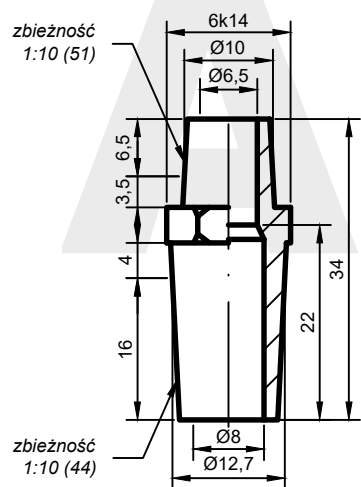
ELEKTRODA NASADKOWA
rozmiar 13

Chwył elektrody

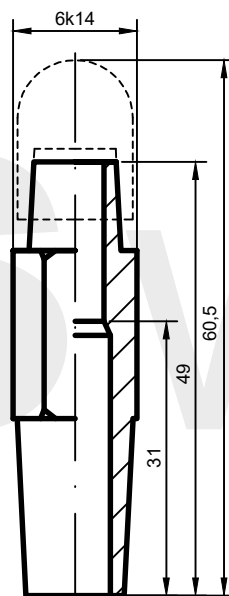
51

Karta katalogowa

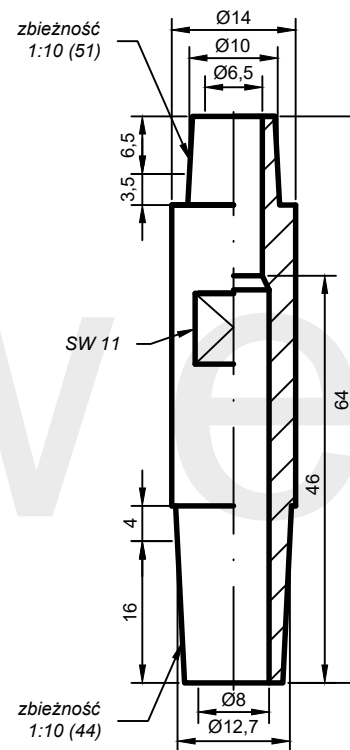
06-00-02-51



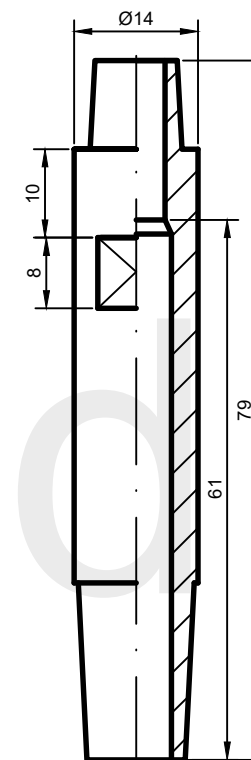
AW: TR51-6k14.34-44



AW: TR51-6k14.49-44

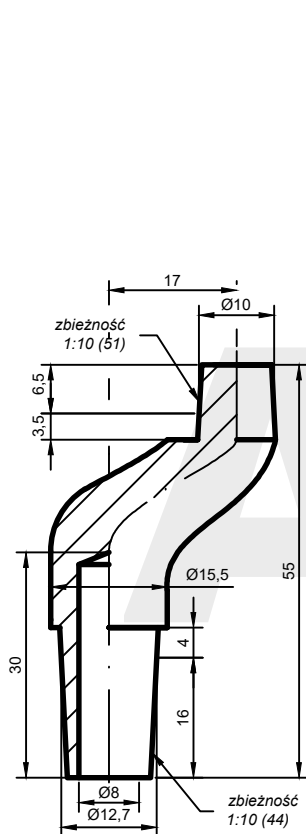


AW: TR51-14.64-44

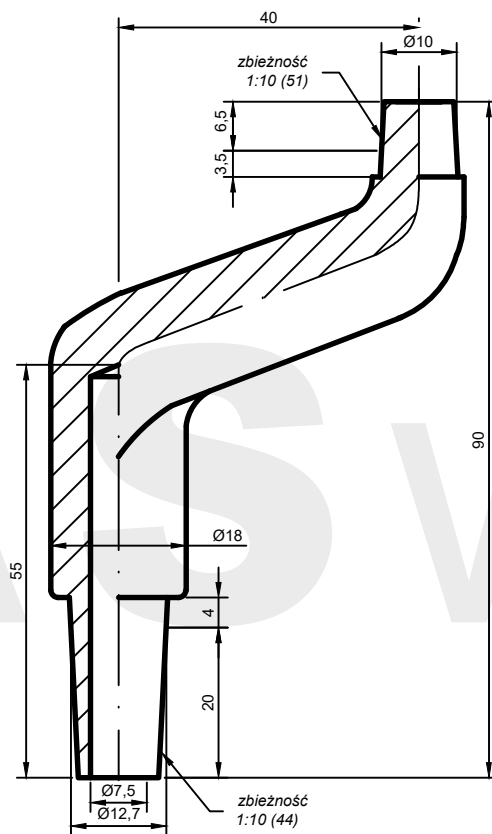


AW: TR51-14.79-44

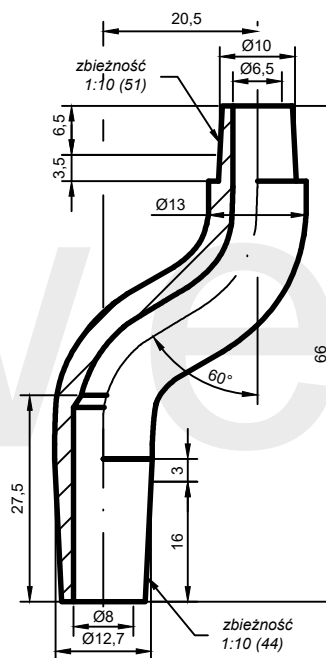
*wykonanie na zamówienie



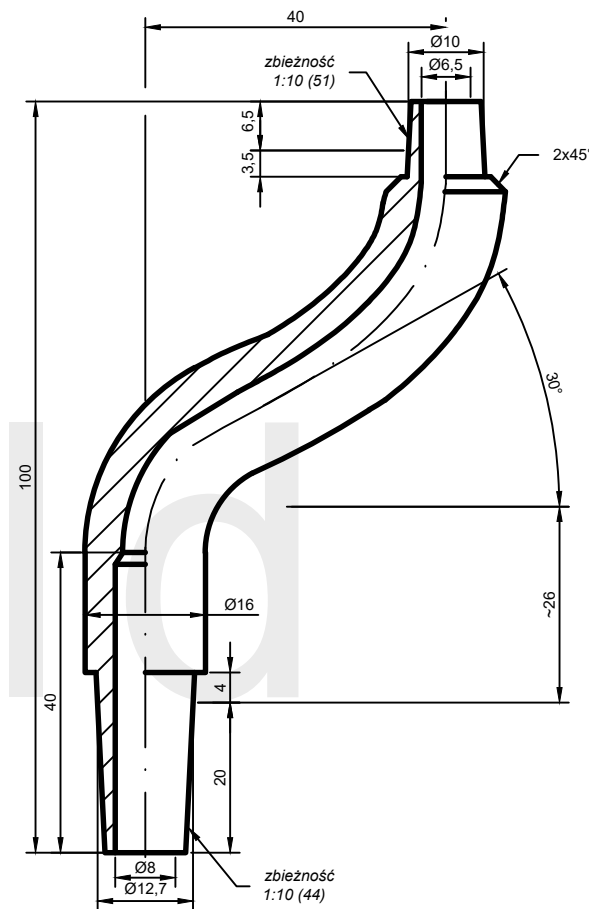
AW: TR51-F06-44



AW: TR51-F03-44



AW: TR51-13.66.20,5-44



AW: TR51-16.100.40-44

*wykonanie na zamówienie

ASweld

OBSADA ELEKTROD NASADKOWYCH
TRZON ODSADZONY

Mocowanie

44/51

Karta katalogowa

06-02-01-44

ASweld

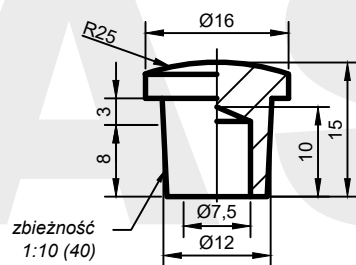
OBSADY ELEKTROD GRZYBKOWYCH I WKRETEK ELEKTRODOWYCH

STOŻEK NR 44

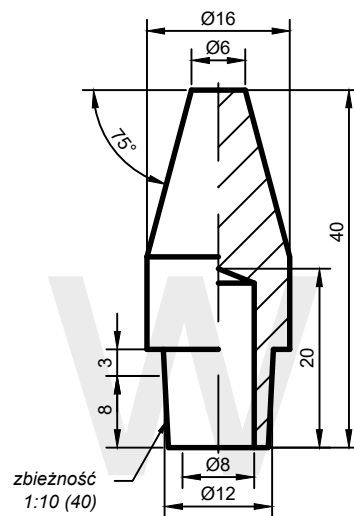
zbieżność 1:10 Ø12,7

Karty katalogowe: 07-__-__-44

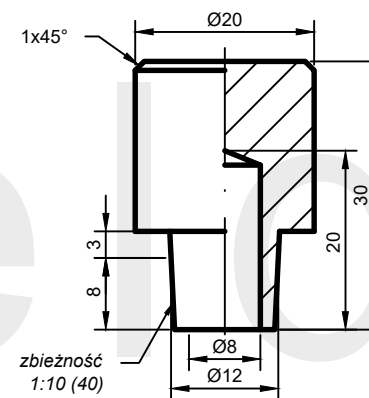




AW: A(25)-16.15-40



AW: B3(6)-16.40-40



AW: C-20.30-40

*wykonanie na zamówienie

ASweld

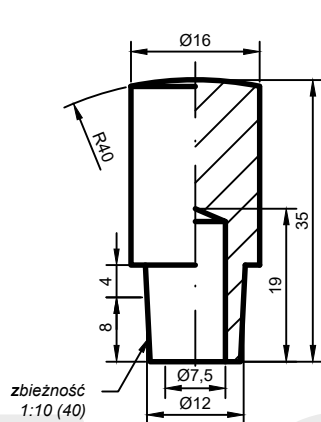
ELEKTRODA GRZYBKOWA

Chwyt elektrody

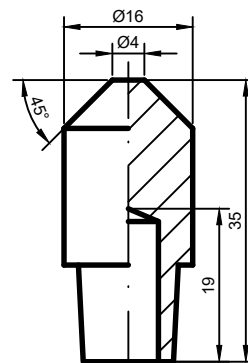
40

Karta katalogowa

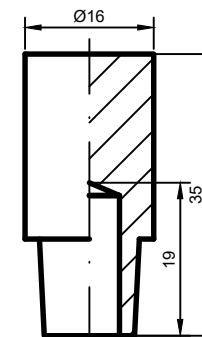
07-00-01-40



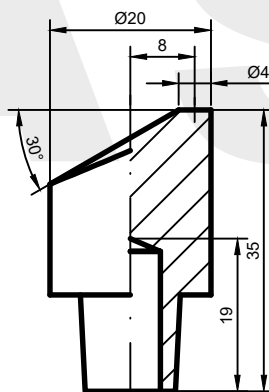
AW: A(40)-16.35-40



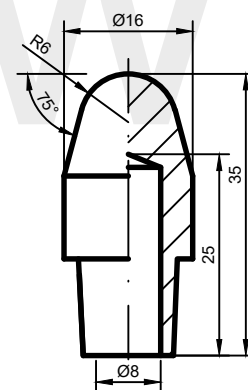
AW: B1(4)-16.35-40



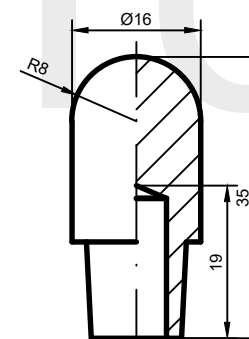
AW: C-16.35-40



AW: D(4)-20.35-40



AW: E3(6)-16.35-40



AW: F-16.35-40

*wykonanie na zamówienie

ASweld

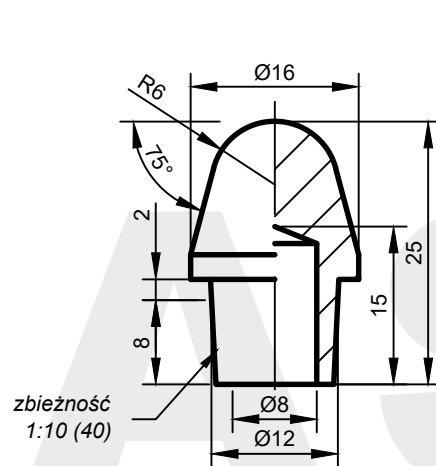
ELEKTRODA GRZYBKOWA

Chwył elektrody

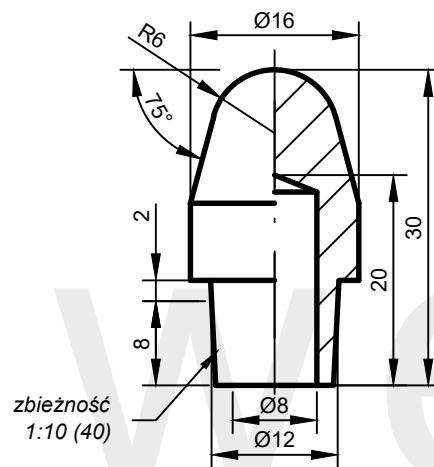
40

Karta katalogowa

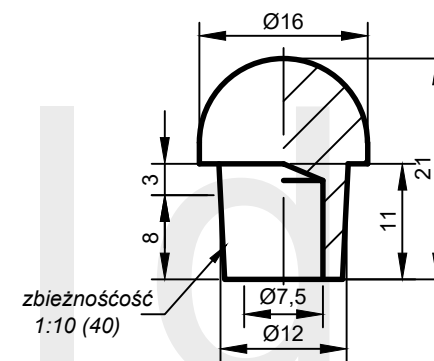
07-00-02-40



AW: E3(6)-16.25-40



AW: E3(6)-16.30-40



AW: F-16.21-40

*wykonanie na zamówienie

ASweld

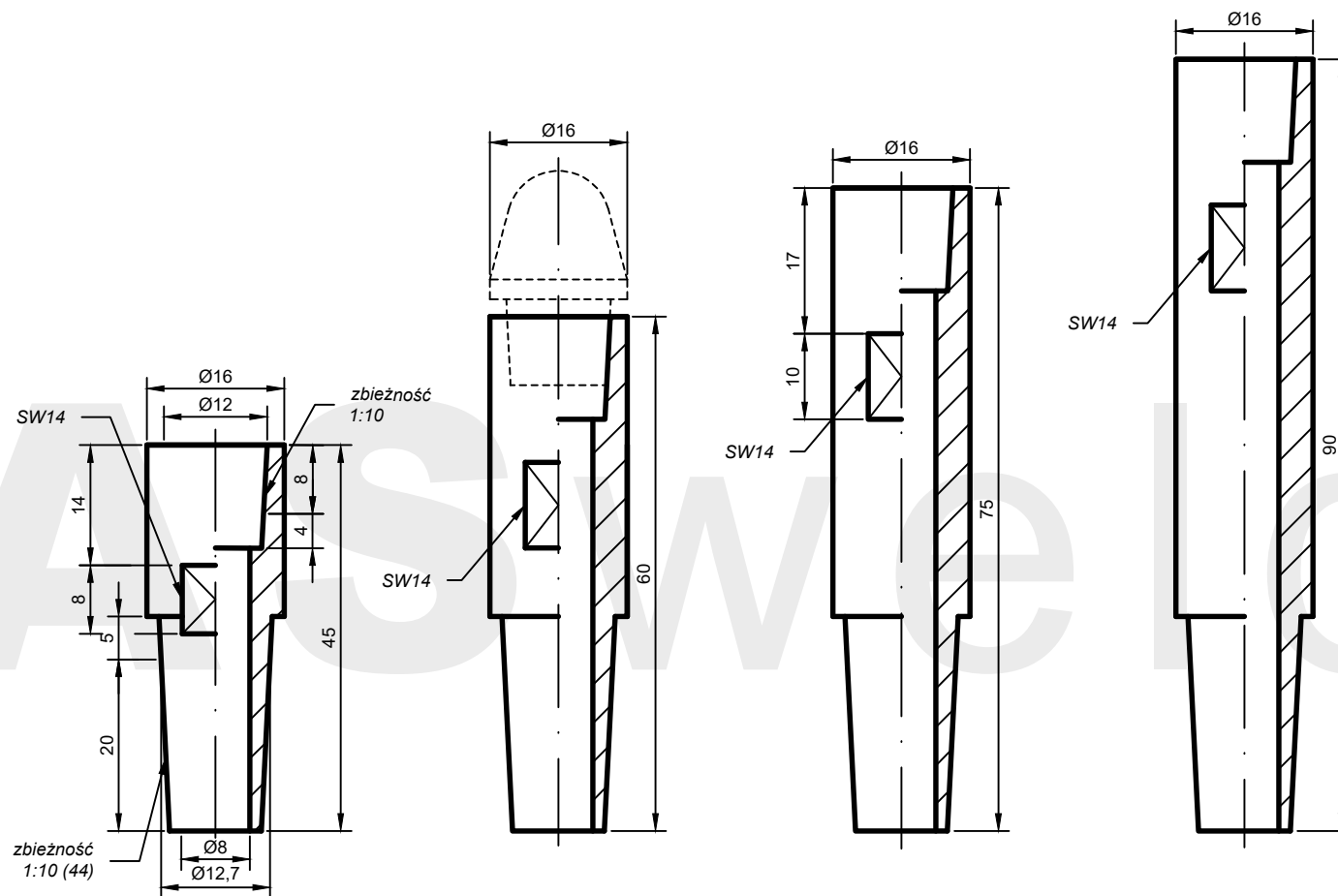
ELEKTRODA GRZYBKOWA

Chwyt elektrody

40

Karta katalogowa

07-00-03-40



AW: GN40-16.45-44

AW: GN40-16.60-44

AW: GN40-16.75-44

AW: GN40-16.90-44

*wykonanie na zamówienie

ASweld

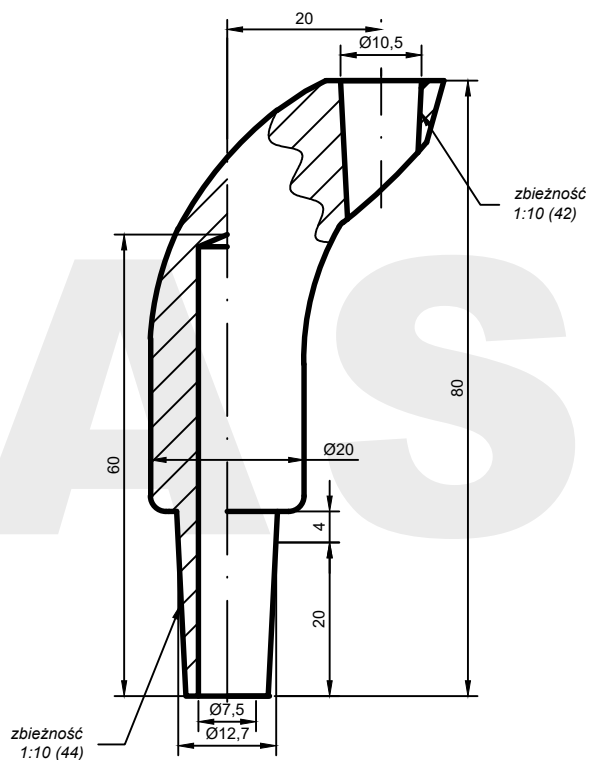
OBSADA ELEKTROD GRZYBKOWYCH
PROSTA

Mocowanie

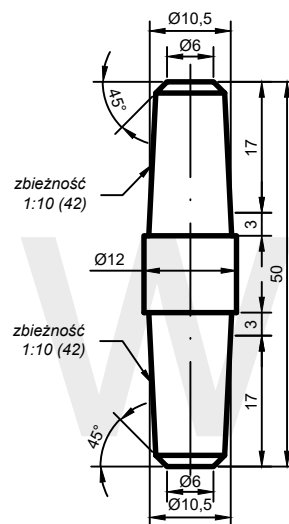
44/40

Karta katalogowa

07-01-01-44

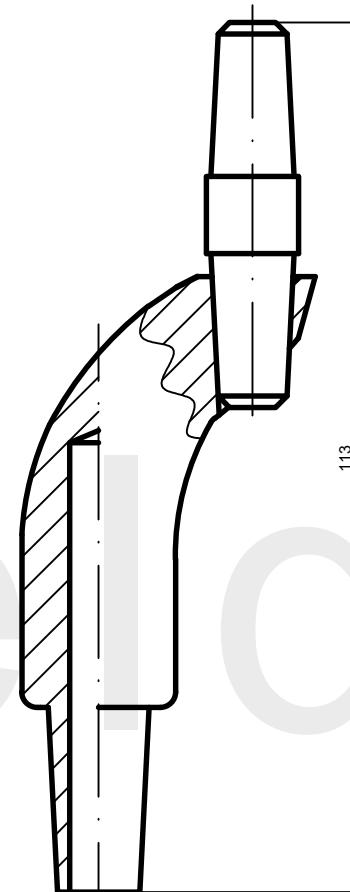


AW: GN42-20.80.20-44



AW: B42(6)-12.50-42(17)

AW: B42(6)-12.50-42(17)Be*



*wykonanie na zamówienie

ASweld

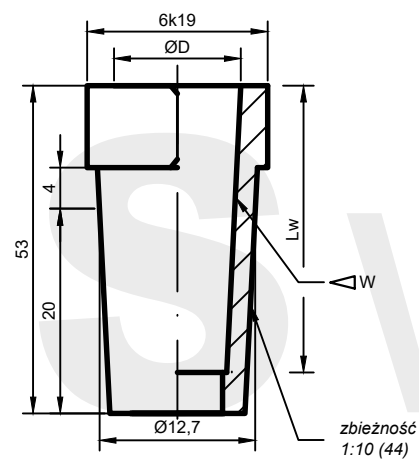
ADAPTER ELEKTRODOWY
GNIAZDO ODSADZONE Z ELEKTRODĄ BERYLOWĄ

Mocowanie

44

Karta katalogowa

07-03-01-44



$\triangle W$	$\varnothing D$	Lw
43*	$\varnothing 11,8$	23
42	$\varnothing 10,5$	15
40	$\varnothing 12$	15
31*	$\varnothing 10,8$	15
11	$\varnothing 12,07$	23

AW: GN $\triangle W$ -6k19.53-44

*wykonanie na zamówienie

ASweld

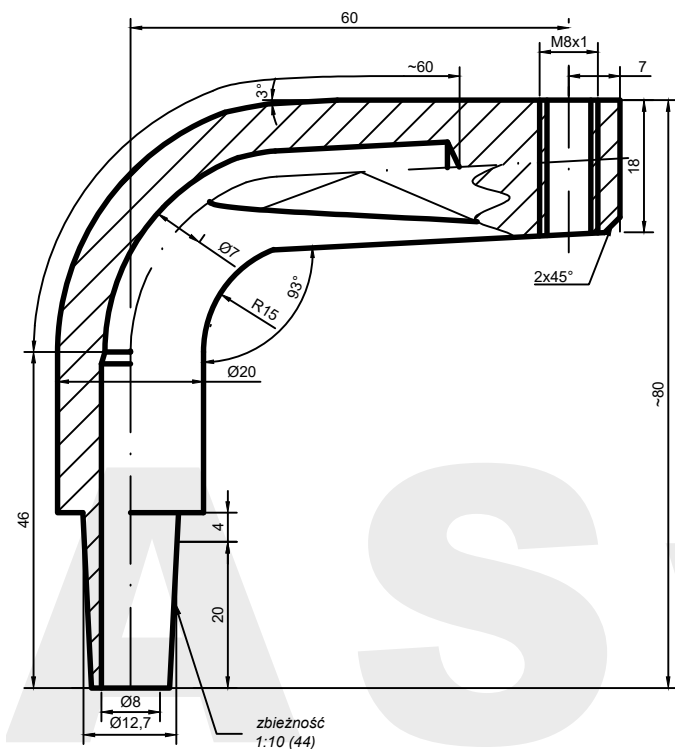
ADAPTER ELEKTRODOWY
REDUKCJA STOŻKÓW

Mocowanie

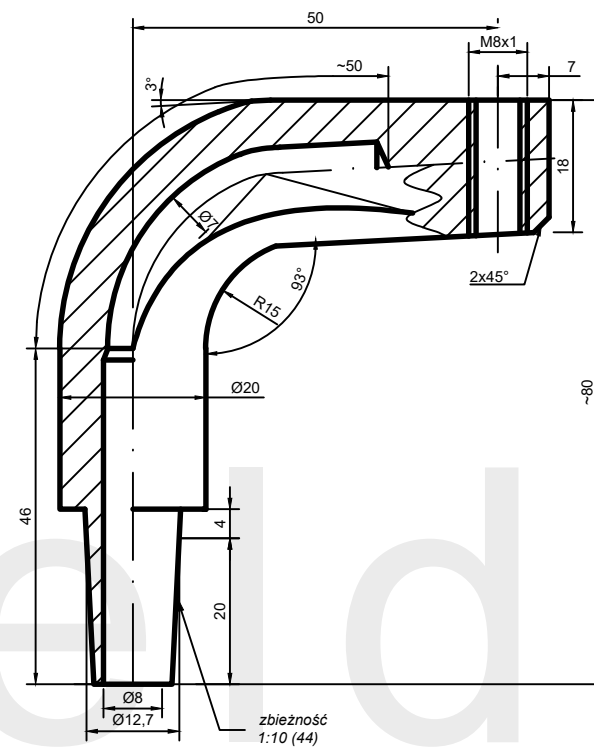
44

Karta katalogowa

07-04-00-44



AW: GN8M1-20.80.60-44



AW: GN8M1-20.80.50-44 *wykonanie na zamówienie

ASweld

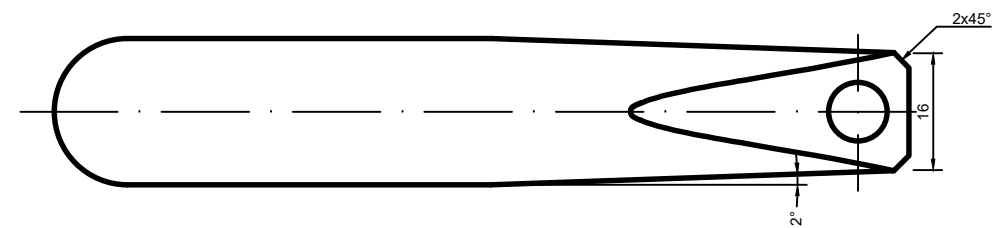
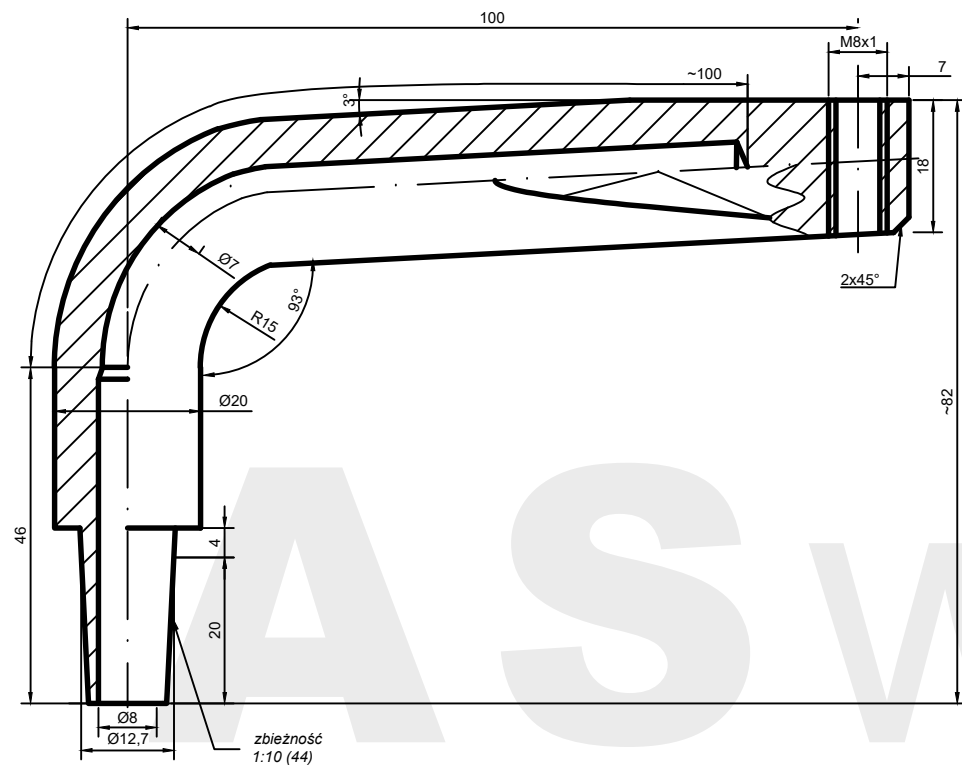
OBSADA DLA WKRETEK ELEKTRODOWYCH
ODSADZONA

Mocowanie

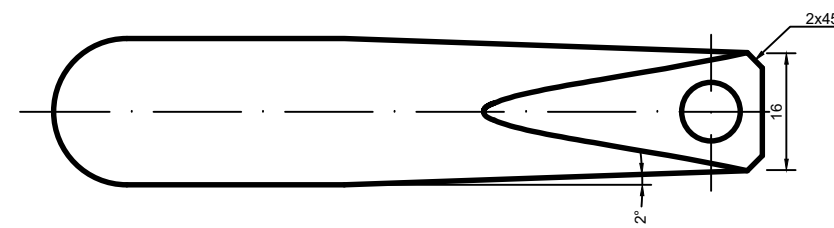
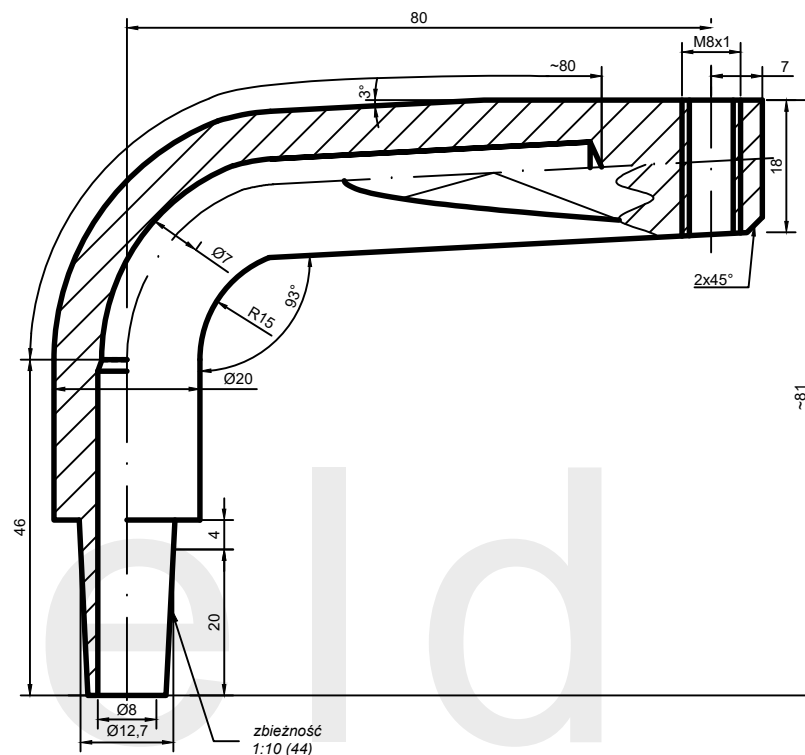
44

Karta katalogowa

07-05-01-44



AW: GN8M1-20.82.100-44



AW: GN8M1-20.80.81-44 *wykonanie na zamówienie

ASweld

OBSADA DLA WKRETEK ELEKTRODOWYCH
ODSADZONA

Mocowanie

44

Karta katalogowa

07-05-02-44

ASweld

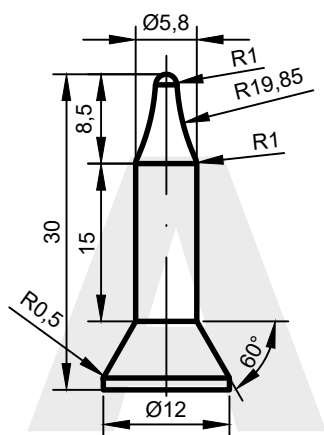
ELEKTRODY DO ZGRZEWANIA ŚRUB I NAKRĘTEK

STOŻEK NR 44

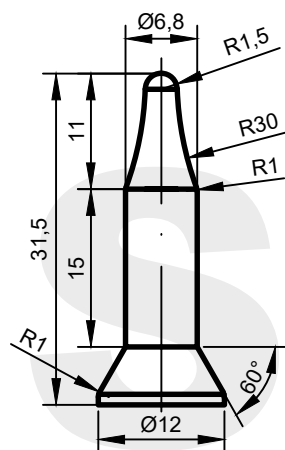
zbieżność 1:10 Ø12,7

Karty katalogowe: 08-__-__-44

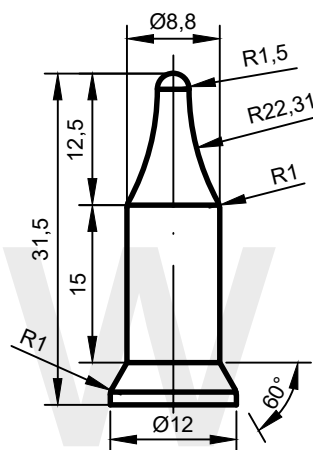




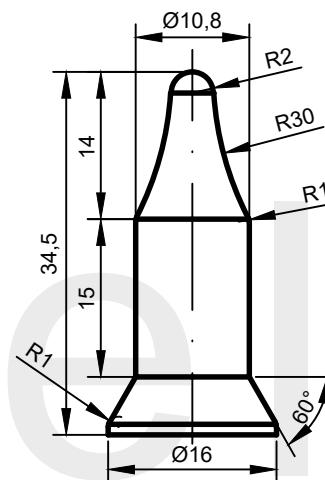
AW: PA-M5-KCF



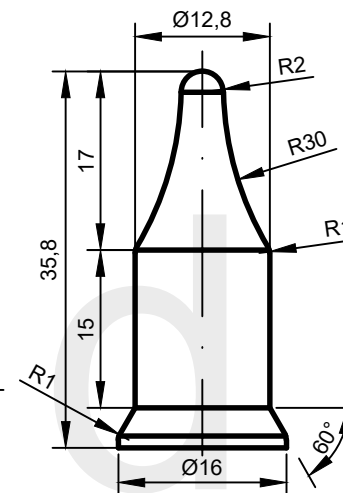
AW: PA-M6-KCF
PA-M6-CER



AW: PA-M8-KCF
PA-M8-CER



AW: PA-M10-KCF



AW: PA-M12-KCF

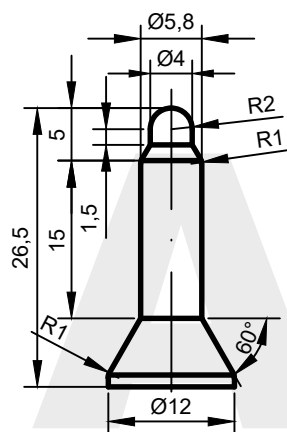
*wykonanie na zamówienie

ASweld

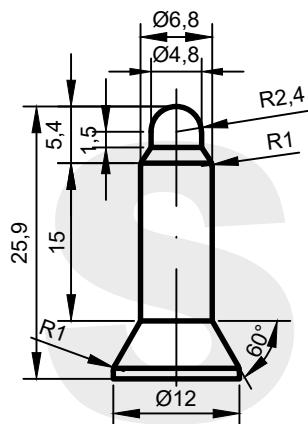
PINY DO ZGRZEWANIA
DO AUTOMATYCZNEGO PODAWANIA NAKRĘTEK

Karta katalogowa

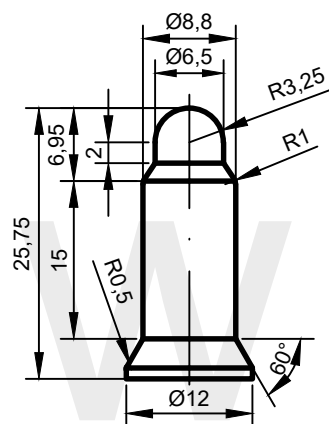
08-00-01-00



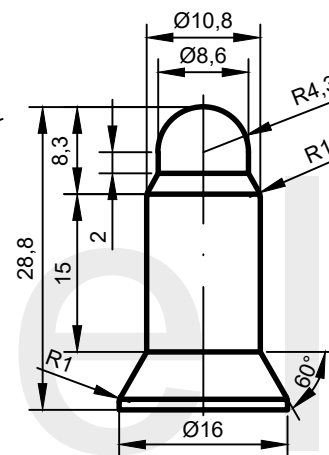
AW: PR-M5-KCF



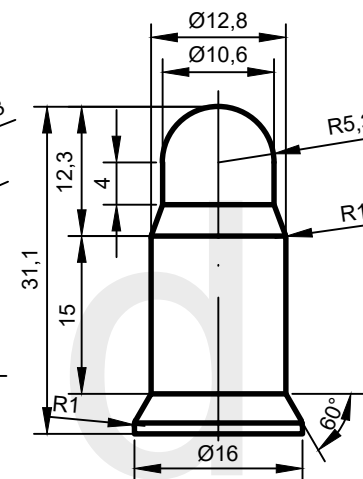
AW: PR-M6-KCF



AW: PR-M8-KCF



AW: PR-M10-KCF



AW: PR-M12-KCF

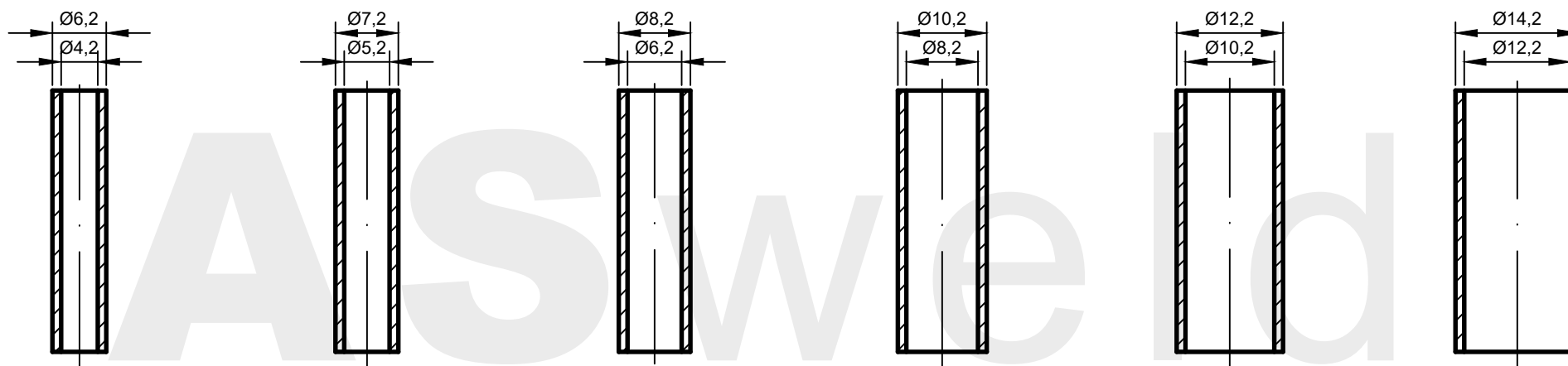
*wykonanie na zamówienie

ASweld

**PINY DO ZGRZEWANIA
DO RĘCZNEGO PODAWANIA NAKRĘTEK**

Karta katalogowa

08-00-02-00



AW: T-M4-KCF

AW: T-M5-KCF

AW: T-M6-KCF

AW: T-M8-KCF

AW: T-M10-KCF

AW: T-M12-KCF

*wykonanie na zamówienie

ASweld

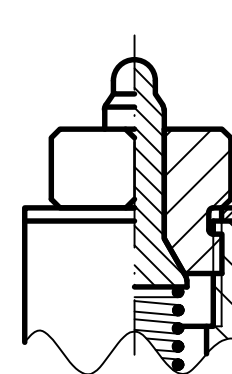
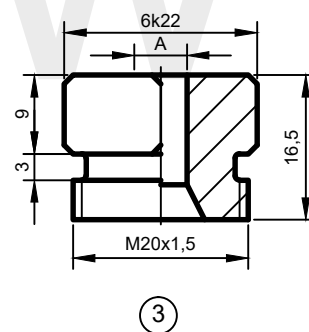
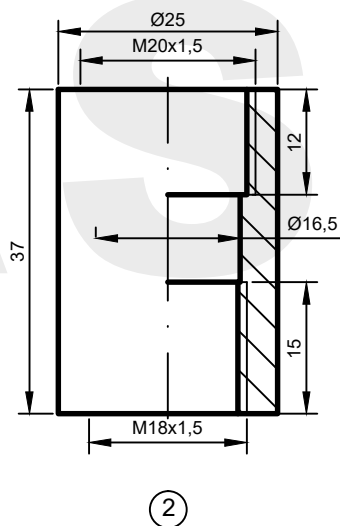
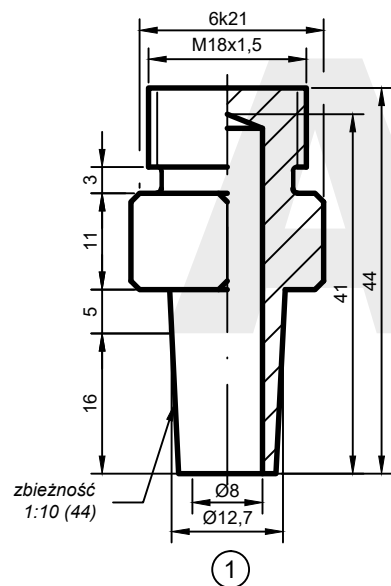
TULEJA Z KCF
DO ZGRZEWANIA ŚRUB

Karta katalogowa

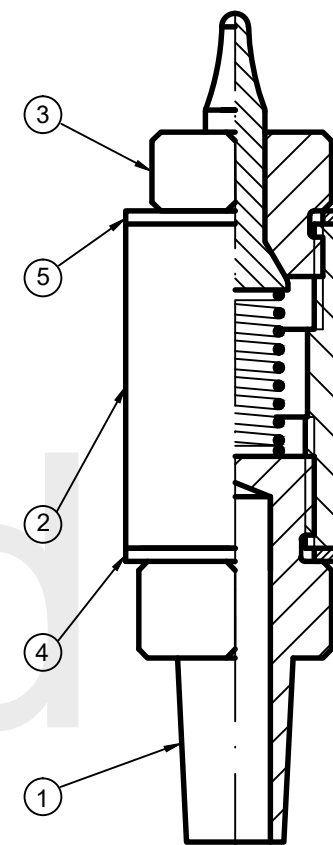
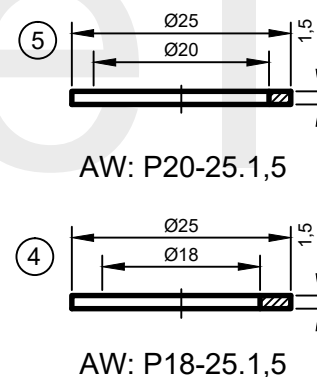
08-00-03-00

Pin do zgrzewania		A [mm]
ręcznego	automatycznego	
PR-M5-KCF	PA-M5-KCF	5.8
PR-M6-KCF	PA-M6-KCF	6.8
PR-M8-KCF	PA-M8-KCF	8.8

PA-M6-CER	6.8
PA-M8-CER	8.8



Elektroda z pinem do ręcznego podawania nakrętek



Elektroda z pinem do automatycznego podawania nakrętek

AW: TR-6k22.44-44/18M1,5

AW: KR20M1,5-25.37-18M1,5

AW: WA-6k22.17-20M1,5

ASweld

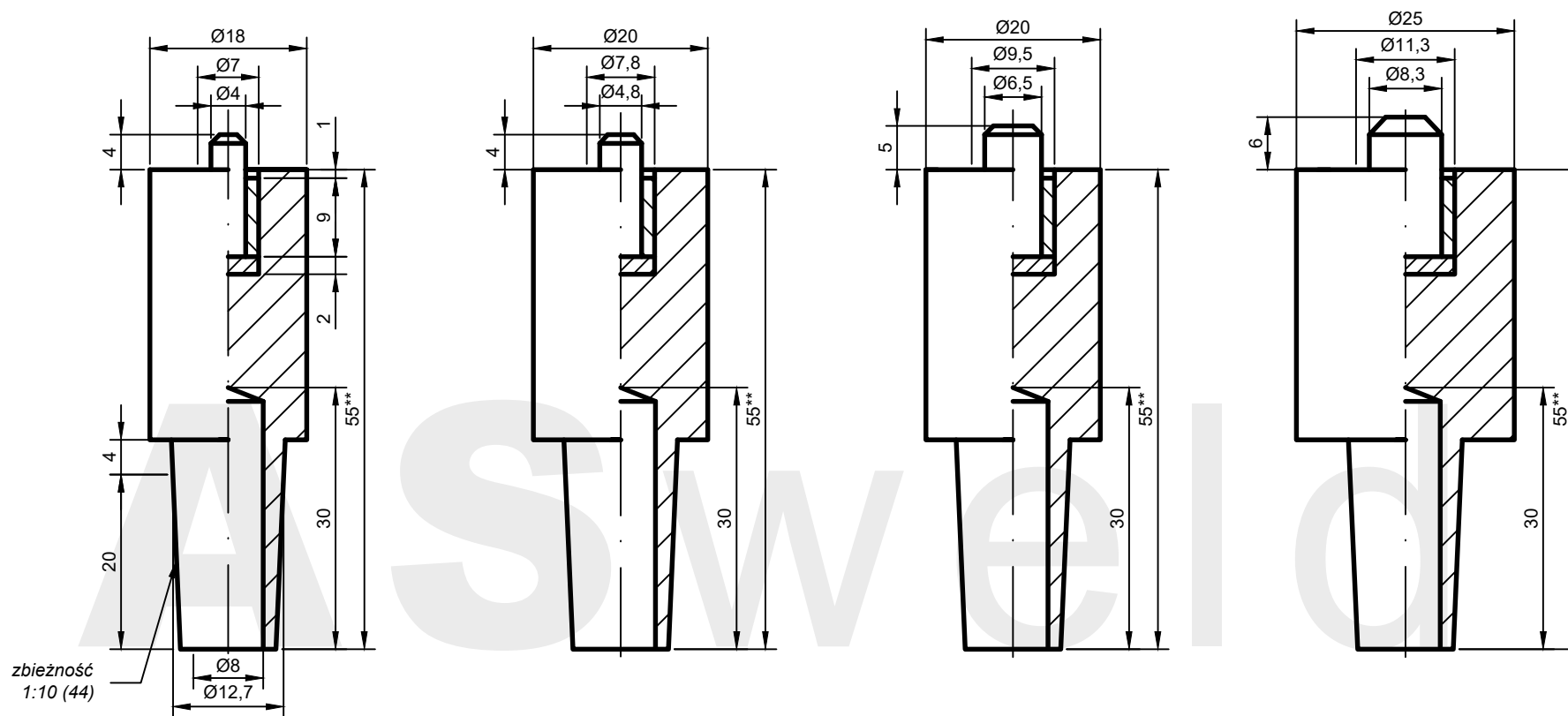
ELEKTRODA Z PINEM
DO ZGRZEWANIA NAKRĘTEK

Chwył elektrody

44

Karta katalogowa

08-01-01-44



AW: M5N-18.55-44

AW: M6N-20.55-44

AW: M8N-20.55-44

AW: M10N-25.55-44

*wykonanie na zamówienie

**możliwe inne długości wg uzgodnień

ASweld

ELEKTRODA PROSTA
DO ZGRZEWANIA NAKRĘTEK TYPU DIN 929

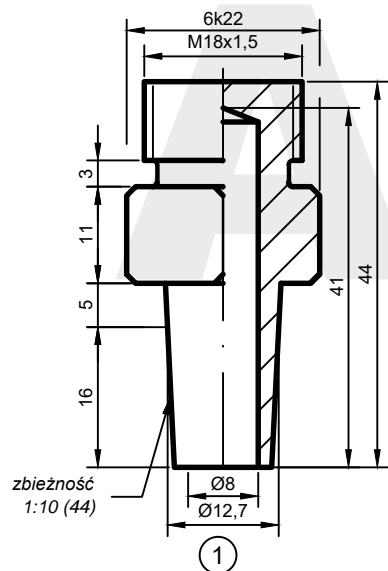
Chwył elektrody

44

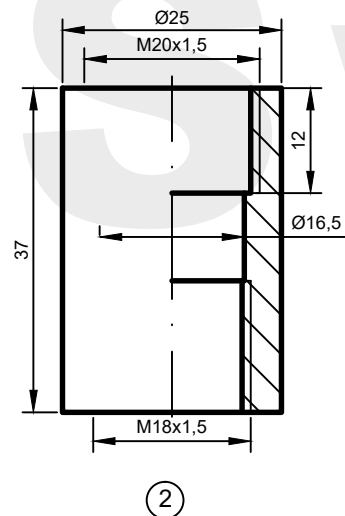
Karta katalogowa

08-01-02-44

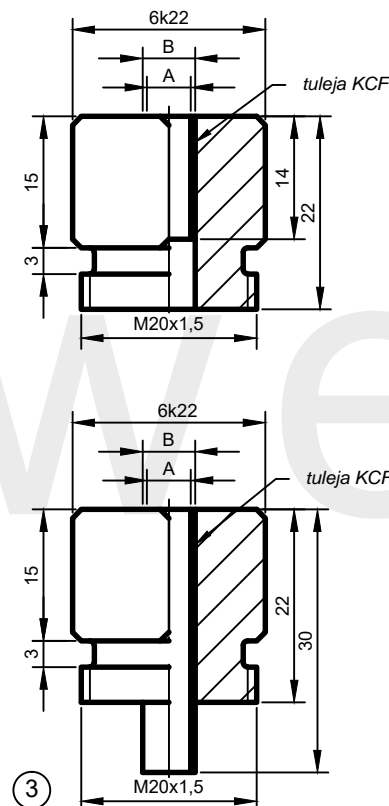
Tuleja	A [mm]	B [mm]
T-M4-KCF	4.2	6.2
T-M5-KCF	5.2	7.2
T-M6-KCF	6.2	8.2
T-M8-KCF	8.2	10.2



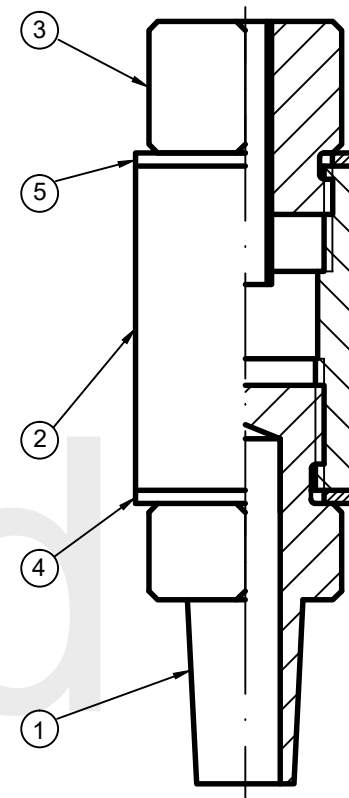
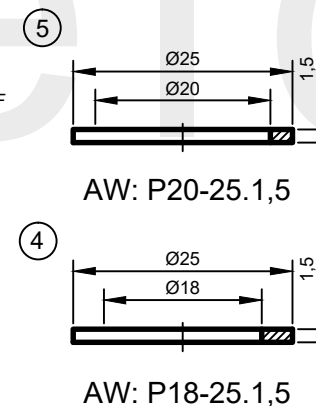
AW: TR-6k22.44-44/18M1,5



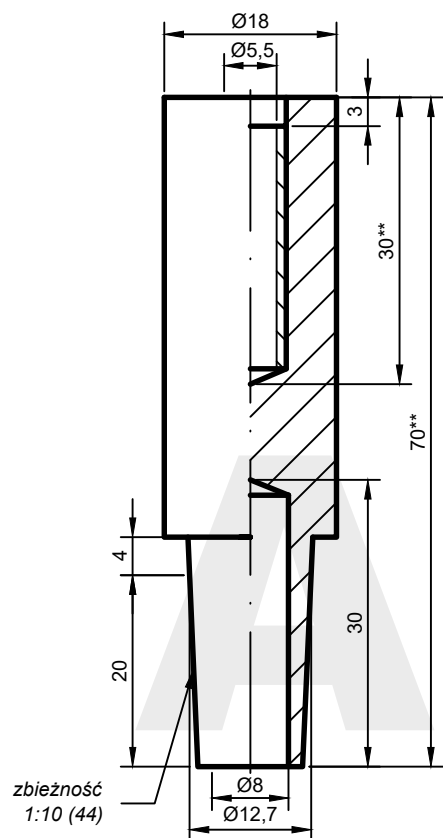
AW: KR20M1,5-25.37-18M1,5



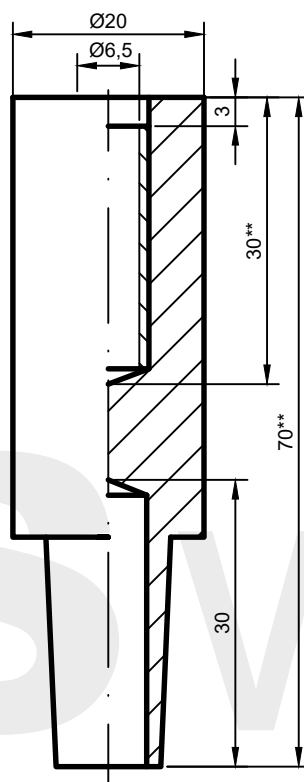
AW: WA-6k22.22-20M1,5



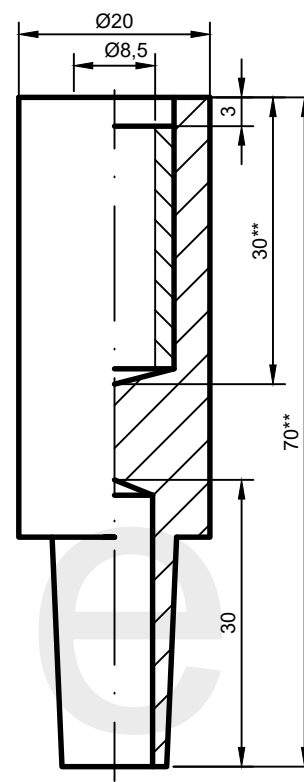
Elektroda z tuleją z KCF



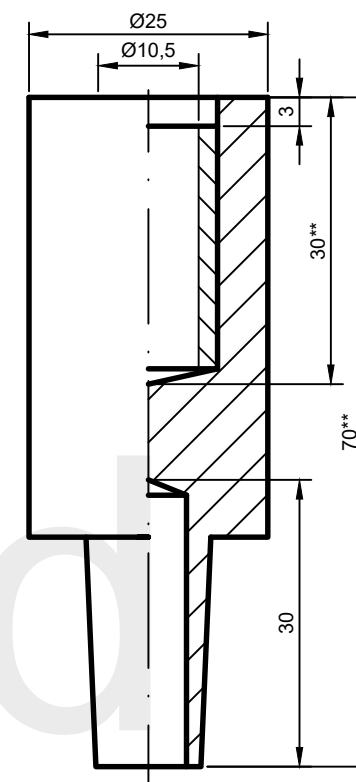
AW: M5S-18.70-44



AW: M6S-20.70-44



AW: M8S-20.70-44



AW: M10S-25.70-44

*wykonanie na zamówienie
**możliwe inne długości wg uzgodnień

ASweld

ELEKTRODA PROSTA
DO ZGRZEWANIA ŚRUB TYPU DIN 34817

Chwył elektrody

44

Karta katalogowa

08-02-02-44

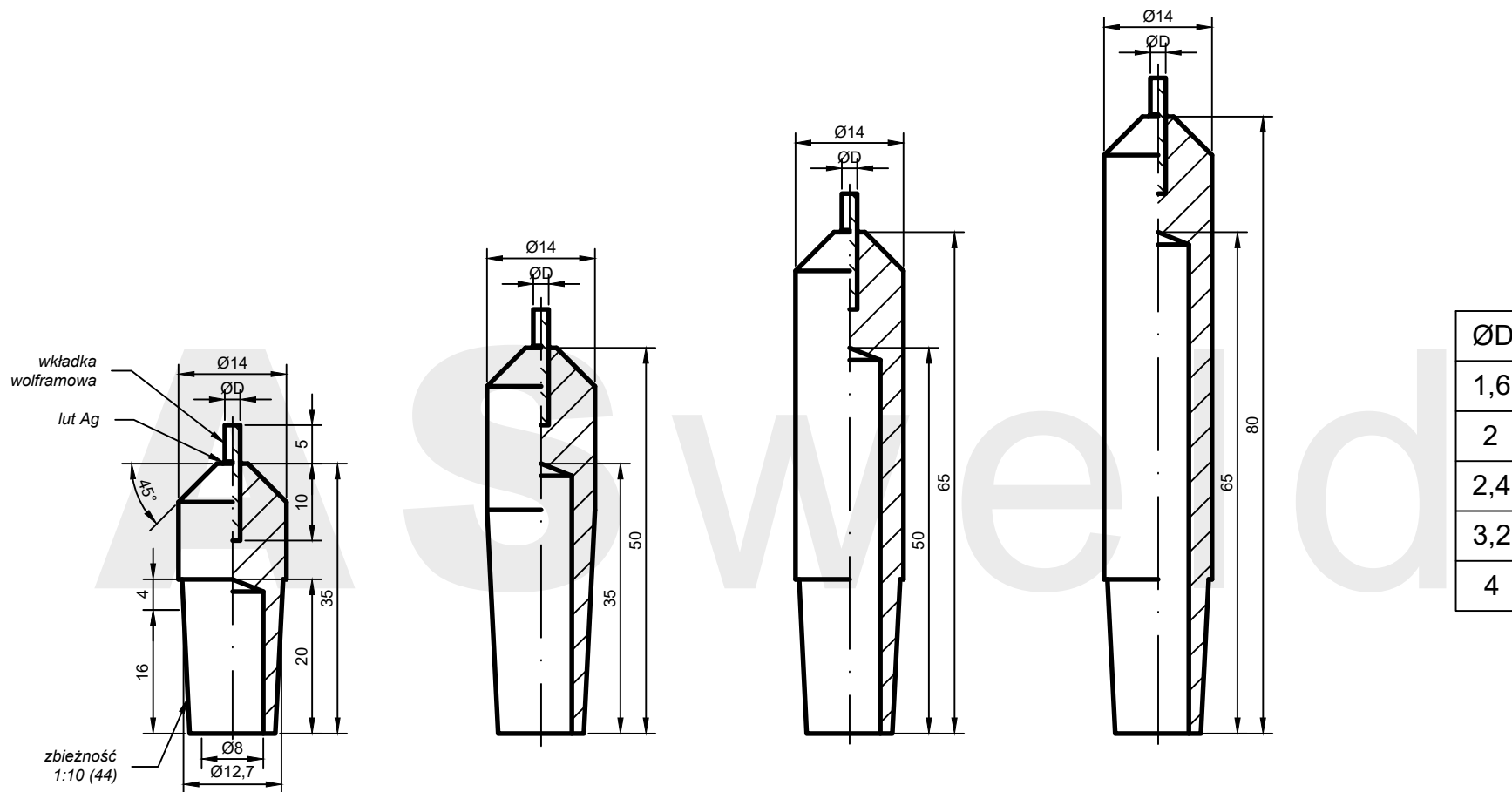
ELEKTRODY WOLFRAMOWE

STOŻEK NR 44

zbieżność 1:10 Ø12,7

Karty katalogowe: 09-__-__-44





AW: WØD-14.35-44*

AW: WØD-14.50-44*

AW: WØD-14.65-44*

AW: WØD-14.80-44*

*wykonanie na zamówienie

ASweld

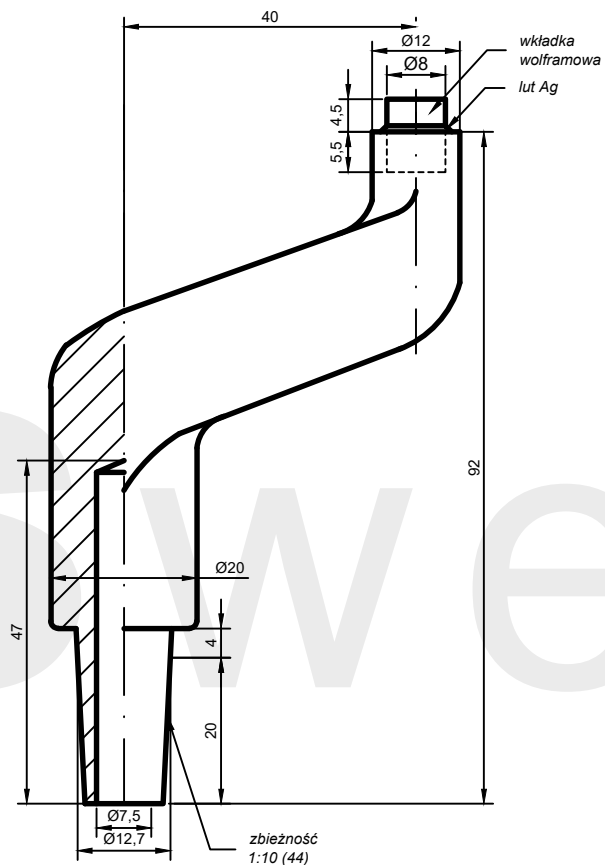
ELEKTRODA PROSTA
Z WKŁADKĄ WOLFRAMOWĄ DO ZGRZEWANIA MIEDZI

Chwyć elektrody

44

Karta katalogowa

09-01-01-44



AW: W8-F03-44

*wykonanie na zamówienie

ASweld

ELEKTRODA ODSADZONA
Z WKŁADKĄ WOLFRAMOWĄ DO ZGRZEWANIA MIEDZI

Chwyć elektrody

44

Karta katalogowa

09-02-01-44

ASweld

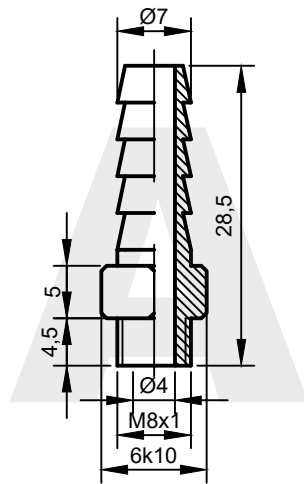
ŚWIECE ELEKTRODOWE

STOŻEK NR 44

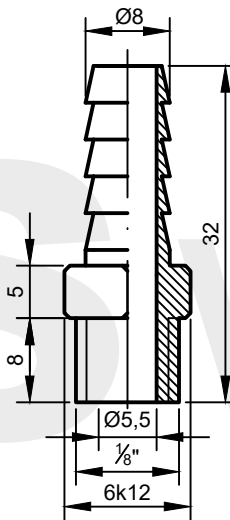
zbieżność 1:10 Ø12,7

Karty katalogowe: 10-__-__-44

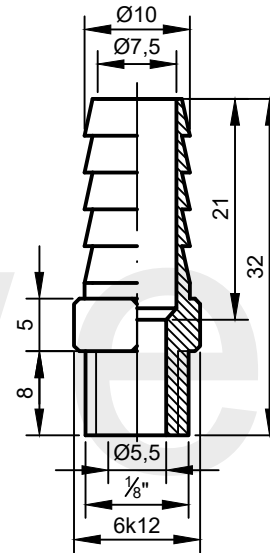




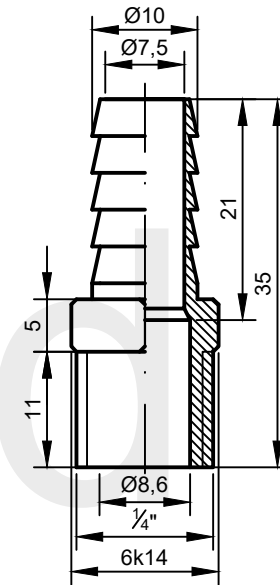
AW: K7-8M1



AW: K8-1G8

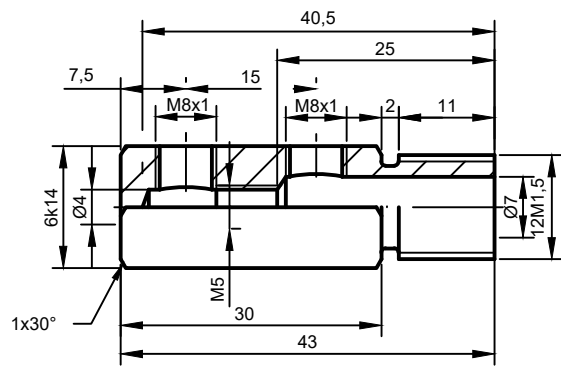


AW: K10-1G8

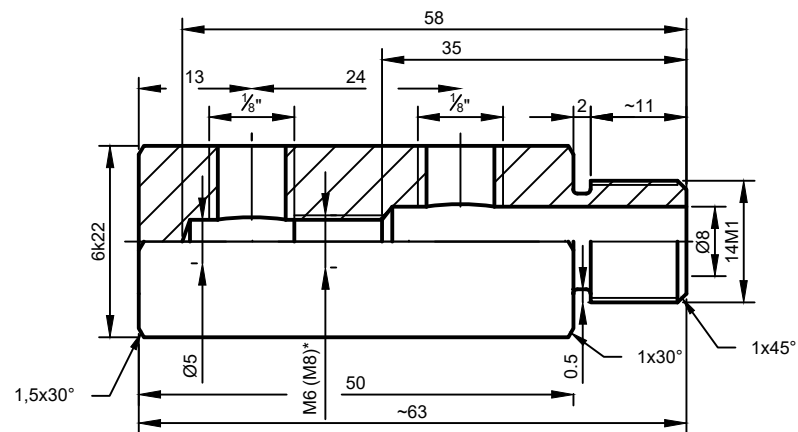


AW: K10-1G4

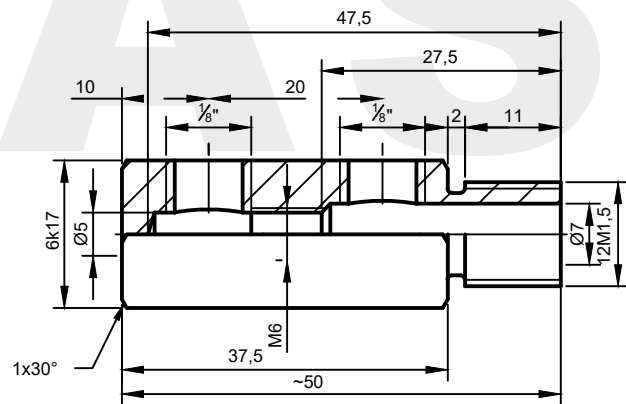
*wykonanie na zamówienie



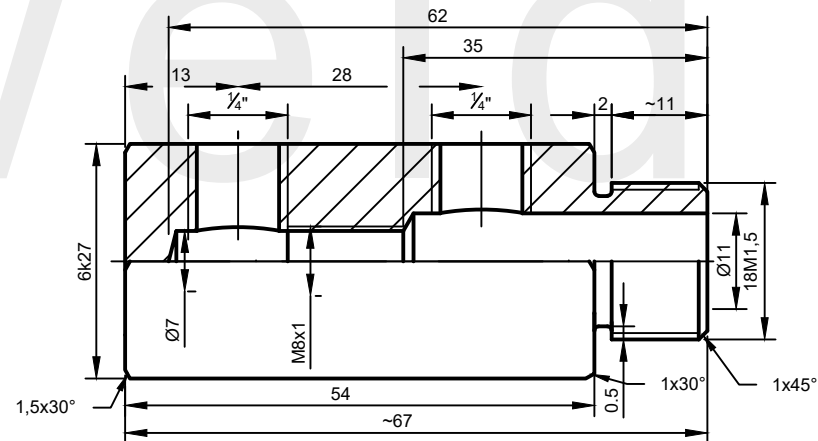
AW: R12M1,5-6k14.43-8M1*



AW: R14M1-6k22.63-1G8

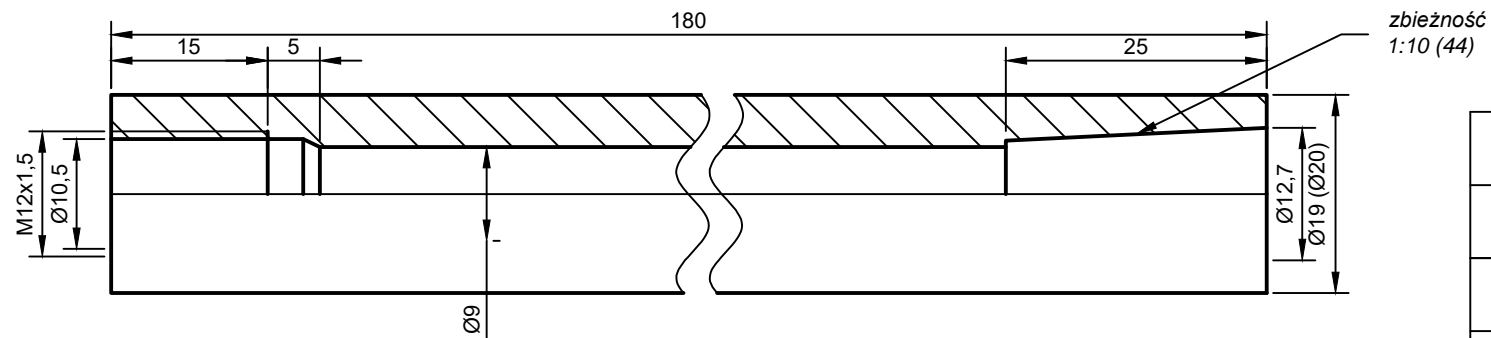


AW: R12M1,5-6k17.50-1G8*



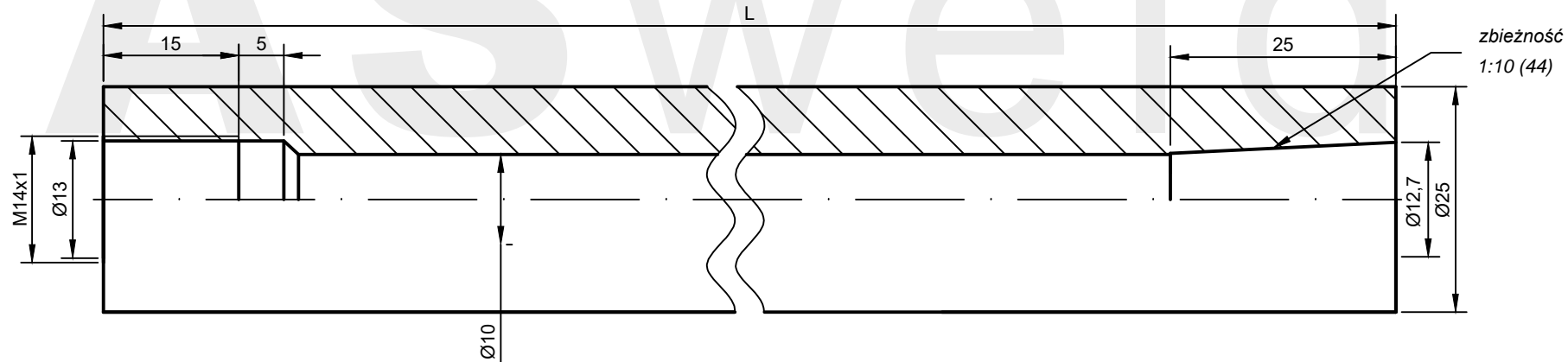
AW: R18M1,5-6k27.67-1G4*

*wykonanie na zamówienie



AW: SC44-19.180

	L[mm]
SC44-19.180	180
SC44-20.180	180
SC44-25.240	240
SC44-25.400	400



AW: SC44-25.L

*wykonanie na zamówienie

ASweld

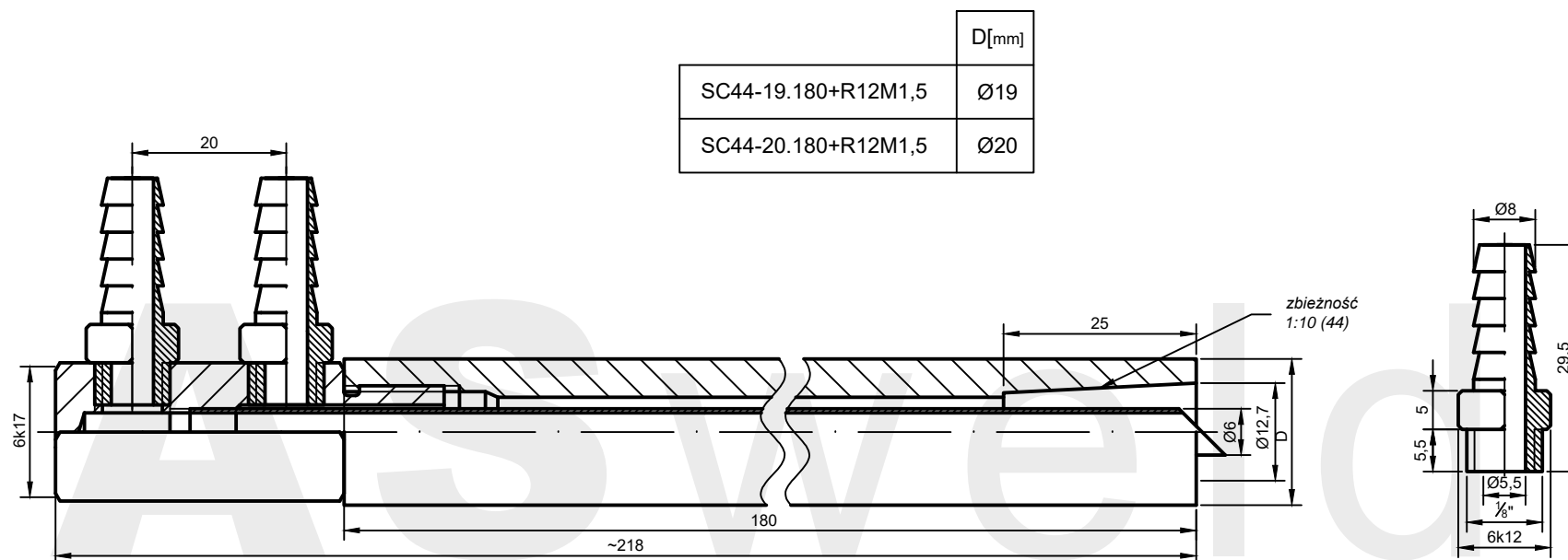
ŚWIECA

Mocowanie

44

Karta katalogowa

10-01-01-44



AW: SC44-D.180+R12M1,5

*wykonanie na zamówienie

ASweld

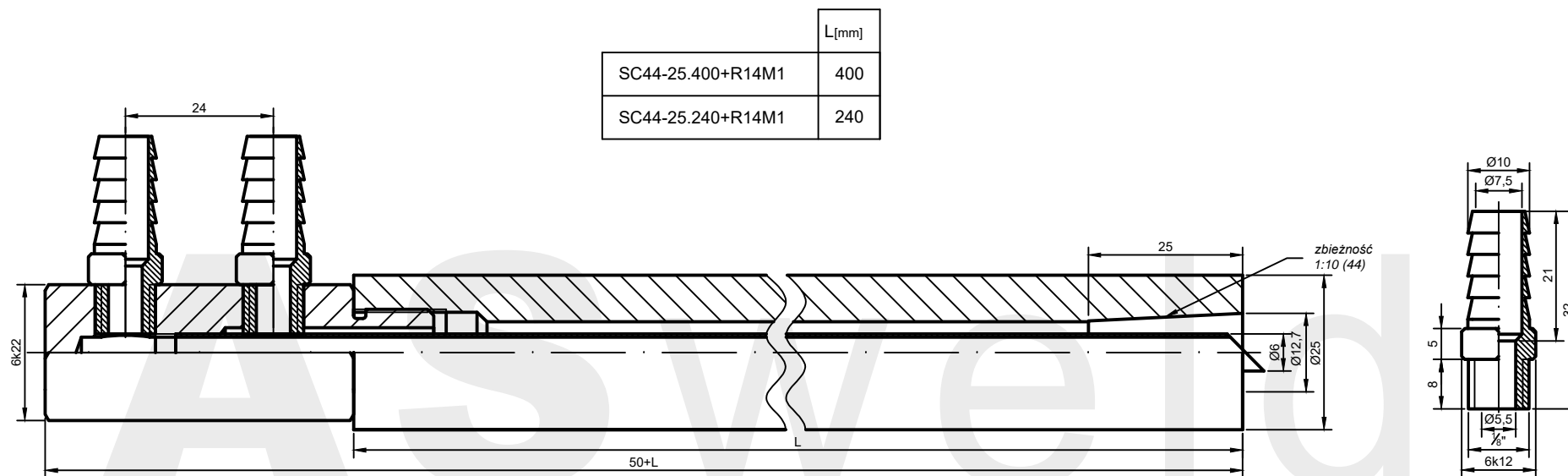
ŚWIECA Z ROZDZIELACZEM

Mocowanie

44

Karta katalogowa

10-02-01-44



AW: SC44-25.L+R14M1

*wykonanie na zamówienie

ASweld

ŚWIECA Z ROZDZIELACZEM

Mocowanie

44

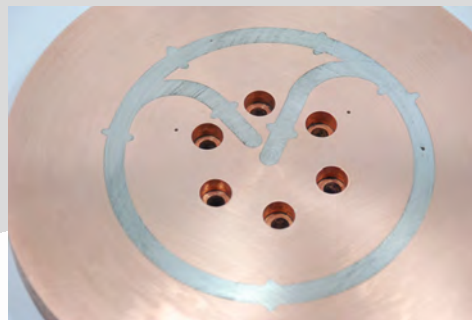
Karta katalogowa

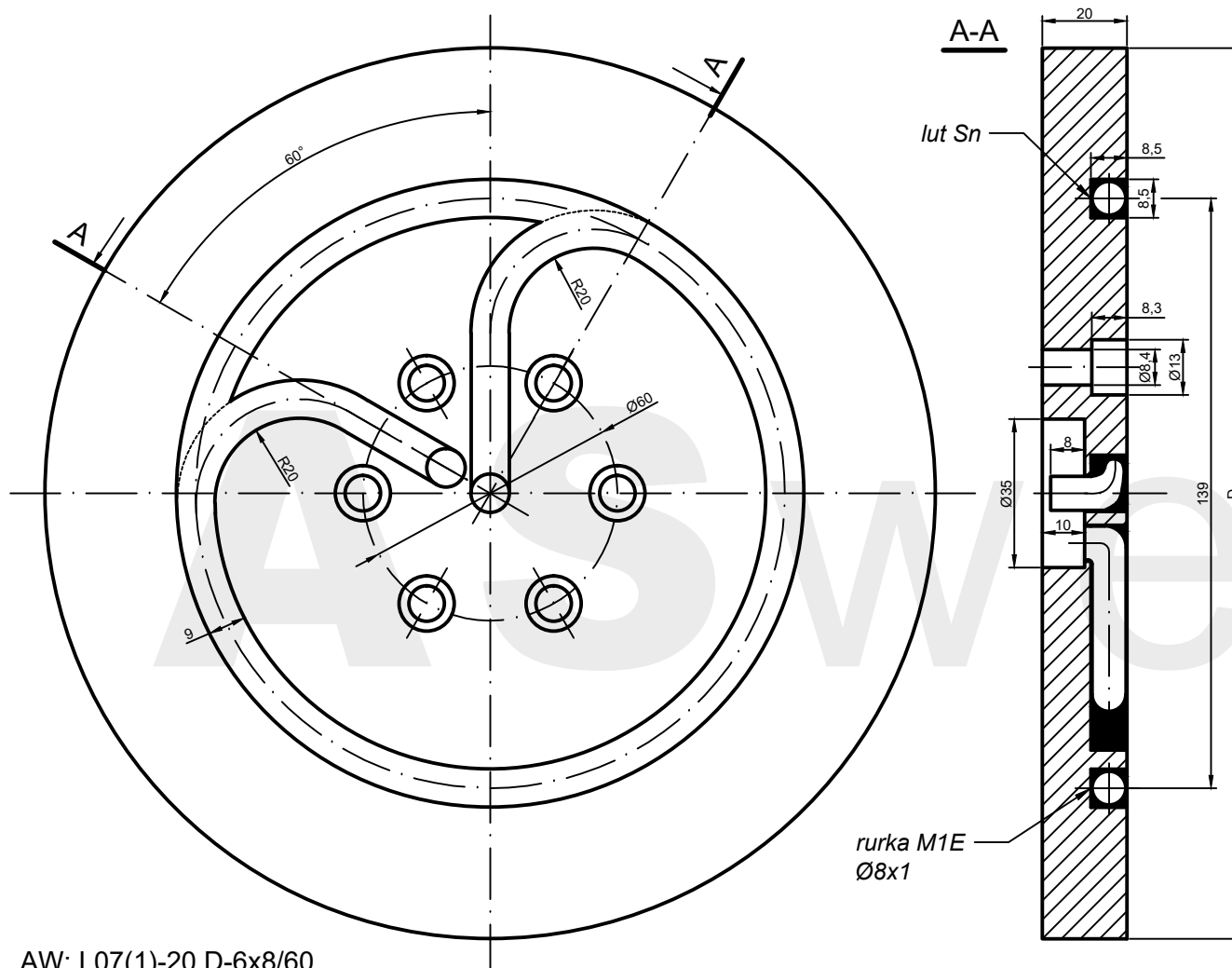
10-02-02-44

ASweld

ELEKTRODY KRAŹKOWE

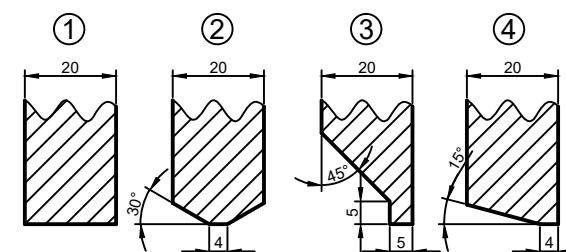
Karty katalogowe: 11-__-__-__





Elektroda	Typ ostrzenia	D
L07(1)-20.210-6x8/60*	1	210
L07(1)-20.240-6x8/60*	1	240
L07(2)-20.210-6x8/60*	2	210
L07(2)-20.240-6x8/60*	2	240
L07(3)-20.210-6x8/60*	3	210
L07(3)-20.240-6x8/60*	3	240
L07(4)-20.220-6x8/60*	4	220
L07(4)-20.240-6x8/60*	4	240

Typy ostrzenia



*wykonanie na zamówienie

AW: L07(1)-20.D-6x8/60

ASweld

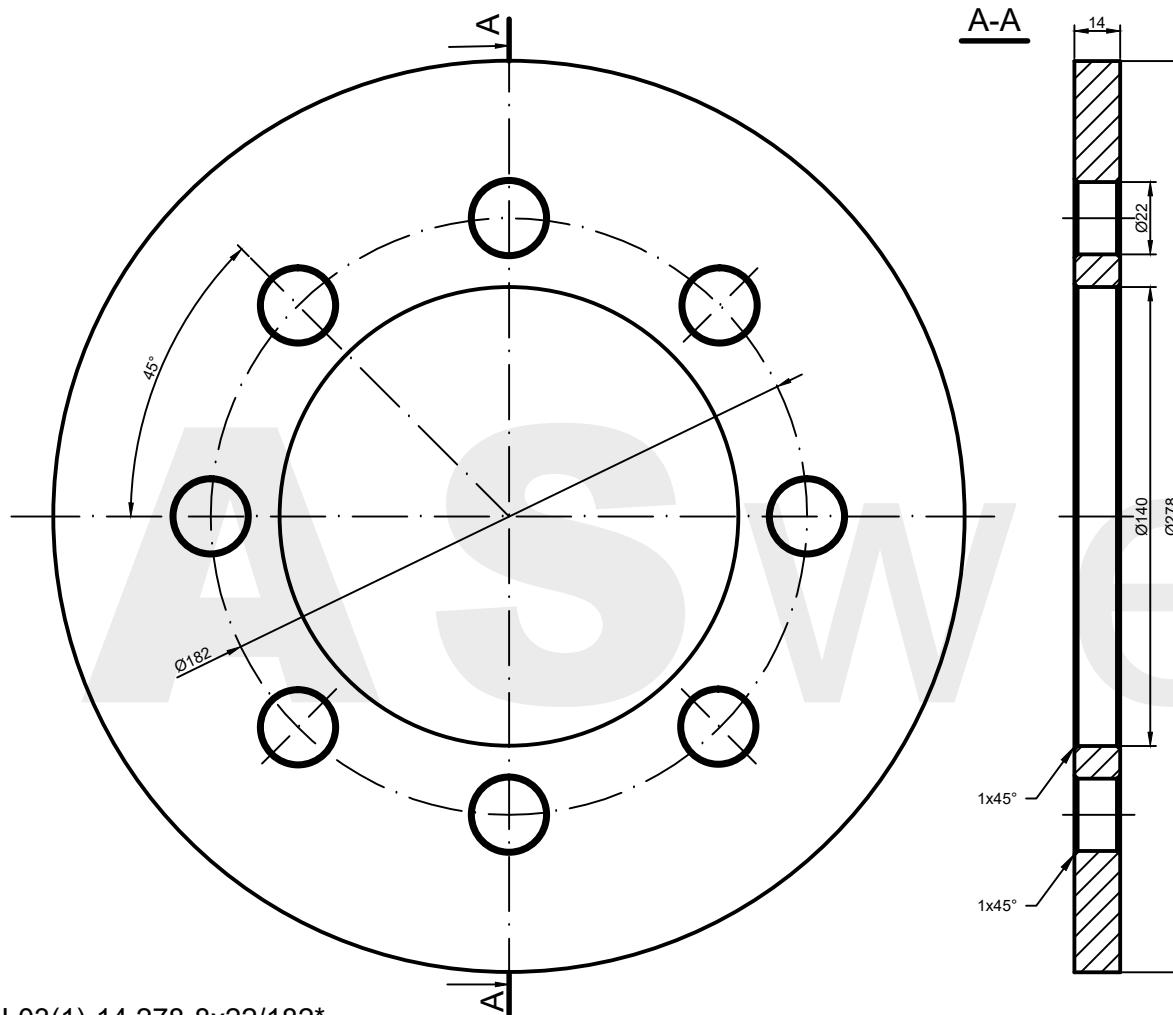
**ELEKTRODA KRAŻKOWA
Z CHŁODZENIEM BEZPOŚREDNIM**

Mocowanie

6x8/60

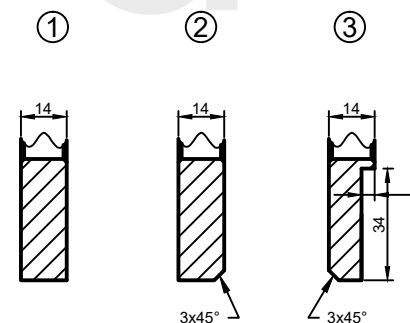
Karta katalogowa

11-01-01-6x8/60



Elektroda	Typ ostrzenia
L03(1)-14.278-8x22/182*	1
L03(2)-14.278-8x22/182*	2
L03(3)-14.278-8x22/182*	3

Typy ostrzenia



*wykonanie na zamówienie

AW: L03(1)-14.278-8x22/182*

ASweld

ELEKTRODA KRAŻKOWA

Mocowanie

8x22/182

Karta katalogowa

11-01-02-8x22/182

Biuro:

NIP: 898-117-63-97
ul. Grunwaldzka 22
50-355 Wrocław
Tel: 600 469 939
e-mail: krzysztof.wojtal@asweld.pl

Produkcja elektrod:

Ul. Jana Długosza 2-6, Budynek 7
51-162 Wrocław
Tel: 530 718 577
e-mail: elektrody@asweld.pl

